

Datasheet for ABIN3032218  
**anti-PIP5K1B antibody (AA 1-30)**

## 3 Images

[Go to Product page](#)

## Overview

|                      |  |
|----------------------|--|
| Quantity:            | 0.4 mL   |
| Target:              | PIP5K1B  |
| Binding Specificity: | AA 1-30  |
| Reactivity:          | Human  |
| Host:                | Rabbit   |
| Clonality:           | Polyclonal   |
| Conjugate:           | This PIP5K1B antibody is un-conjugated                   |
| Application:         | ELISA, Western Blotting (WB), Immunohistochemistry (IHC) |

## Product Details

|               |   |
|---------------|---|
| Immunogen:    | A portion of amino acids 1-30 from the human protein was used as the immunogen for this PIP5K1B antibody. |
| Isotype:      | Ig Fraction   |
| Purification: | Purified  |

## Target Details

|                   |  |
|-------------------|--|
| Target:           | PIP5K1B  |
| Alternative Name: | PIP5K1B ( <a href="#">PIP5K1B Products</a> )   |
| Background:       | Protein kinases are enzymes that transfer a phosphate group from a phosphate donor, generally the $\gamma$ phosphate of ATP, onto an acceptor amino acid in a substrate protein. By this basic mechanism, protein kinases mediate most of the signal transduction in eukaryotic cells, |

## Target Details

regulating cellular metabolism, transcription, cell cycle progression, cytoskeletal rearrangement and cell movement, apoptosis, and differentiation. With more than 500 gene products, the protein kinase family is one of the largest families of proteins in eukaryotes. The family has been classified in 8 major groups based on sequence comparison of their tyrosine (PTK) or serine/threonine (STK) kinase catalytic domains.

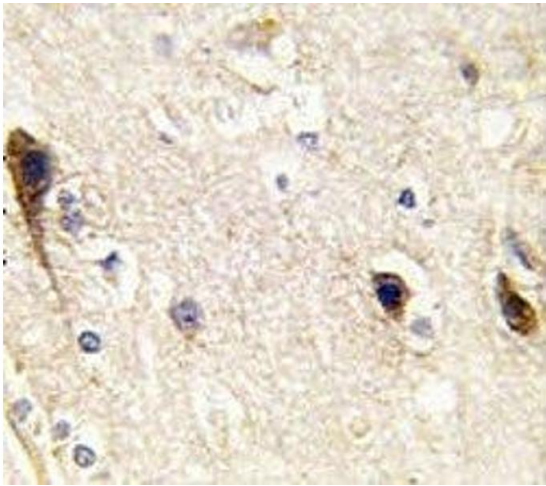
|           |   |
|-----------|---|
| UniProt:  | <a href="#">O14986</a>  |
| Pathways: | <a href="#">PI3K-Akt Signaling</a> , <a href="#">Inositol Metabolic Process</a> , <a href="#">Cell-Cell Junction Organization</a> |

## Application Details

|                    |  |
|--------------------|--|
| Application Notes: | Titration of the PIP5K1B antibody may be required due to differences in protocols and secondary/substrate sensitivity.\. Western blot: 1:1000,IHC (Paraffin): 1:50-1:100 |
| Restrictions:      | For Research Use only  |

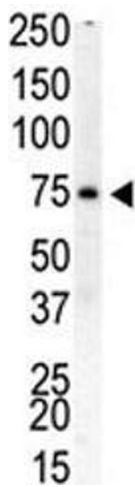
## Handling

|                    |  |
|--------------------|--|
| Format:            | Liquid   |
| Buffer:            | In 1X PBS pH 7.4 with 0.09 % sodium azide  |
| Preservative:      | Sodium azide   |
| Precaution of Use: | This product contains Sodium azide: a POISONOUS AND HAZARDOUS SUBSTANCE which should be handled by trained staff only. |
| Storage:           | -20 °C   |
| Storage Comment:   | Aliquot the PIP5K1B antibody and store frozen at -20°C or colder. Avoid repeated freeze-thaw cycles.                   |



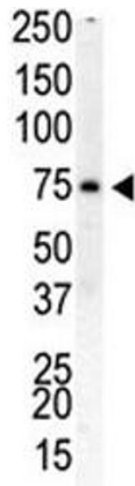
#### Immunohistochemistry

**Image 1.** IHC analysis of FFPE human brain tissue stained with PIP5K1B antibody



#### Western Blotting

**Image 2.** Western blot analysis of PIP5K1B antibody and human placenta cell lysate



#### Western Blotting

**Image 3.** Western blot analysis of PIP5K1B antibody and human placenta cell lysate