



[Go to Product page](#)

Datasheet for ABIN3032220  
**anti-PHGDH antibody (AA 249-277)**

5 Images

Overview

Quantity:	0.4 mL
Target:	PHGDH
Binding Specificity:	AA 249-277
Reactivity:	Human
Host:	Rabbit
Clonality:	Polyclonal
Conjugate:	This PHGDH antibody is un-conjugated
Application:	Western Blotting (WB), ELISA, Immunohistochemistry (IHC), Flow Cytometry (FACS)

Product Details

Immunogen:	A portion of amino acids 249-277 from the human protein was used as the immunogen for this PHGDH antibody.
Isotype:	Ig Fraction
Cross-Reactivity (Details):	Expected species reactivity: Mouse, Rat, Primate
Purification:	Antigen affinity purified

Target Details

Target:	PHGDH
Alternative Name:	PHGDH ( <a href="#">PHGDH Products</a> )
Background:	3-Phosphoglycerate dehydrogenase (PHGDH) catalyzes the transition of 3-phosphoglycerate

## Target Details

into 3-phosphohydroxypyruvate, which is the first and rate-limiting step in the phosphorylated pathway of serine biosynthesis, using NAD<sup>+</sup>/NADH as a cofactor.

UniProt: [O43175](#)

Pathways: [Metabolism of Steroid Hormones and Vitamin D, Warburg Effect](#)

## Application Details

Application Notes: Titration of the PHGDH antibody may be required due to differences in protocols and secondary/substrate sensitivity.\. Western blot: 1:1000,IHC (Paraffin): 1:50-1:100,Flow Cytometry: 1:10-1:50

Restrictions: For Research Use only

## Handling

Format: Liquid

Buffer: In 1X PBS, pH 7.4, with 0.09 % sodium azide

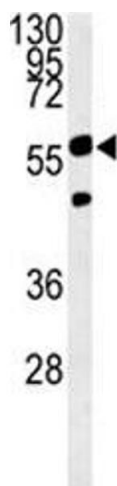
Preservative: Sodium azide

Precaution of Use: This product contains Sodium azide: a POISONOUS AND HAZARDOUS SUBSTANCE which should be handled by trained staff only.

Storage: -20 °C

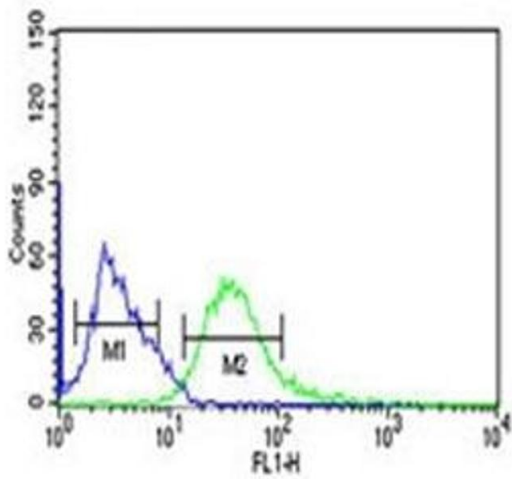
Storage Comment: Aliquot the PHGDH antibody and store frozen at -20°C or colder. Avoid repeated freeze-thaw cycles.

## Images



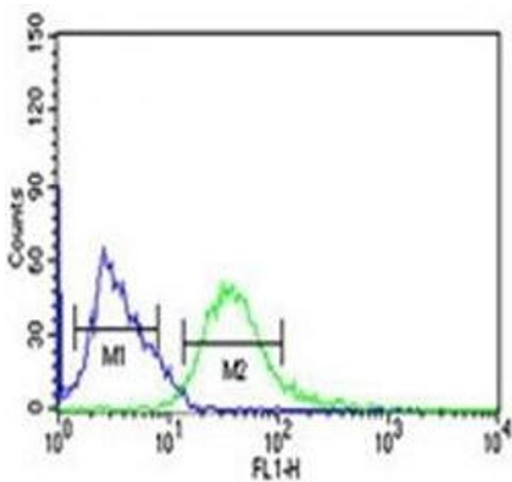
### Western Blotting

**Image 1.** PHGDH antibody western blot analysis in Ramos lysate. Predicted molecular weight ~56 kDa.



### Flow Cytometry

**Image 2.** PHGDH antibody flow cytometric analysis of Ramos cells (green) compared to a [negative control](#) (blue). FITC-conjugated goat-anti-rabbit secondary Ab was used for the analysis.



### Flow Cytometry

**Image 3.** PHGDH antibody flow cytometric analysis of Ramos cells (green) compared to a negative control (blue). FITC-conjugated goat-anti-rabbit secondary Ab was used for the analysis.

Please check the [product details page](#) for more images. Overall 5 images are available for ABIN3032220.