



[Go to Product page](#)

Datasheet for ABIN3032224
anti-PGK1 antibody (AA 117-145)

9 Images

Overview

Quantity:	0.4 mL
Target:	PGK1
Binding Specificity:	AA 117-145
Reactivity:	Human, Mouse
Host:	Rabbit
Clonality:	Polyclonal
Conjugate:	This PGK1 antibody is un-conjugated
Application:	Western Blotting (WB), ELISA, Immunohistochemistry (IHC), Immunofluorescence (IF), Flow Cytometry (FACS)

Product Details

Immunogen:	A portion of amino acids 117-145 from the human protein was used as the immunogen for this PGK1 antibody.
Isotype:	Ig Fraction
Cross-Reactivity (Details):	Expected species reactivity: Primate, Rat
Purification:	Purified

Target Details

Target:	PGK1
Alternative Name:	PGK1 (PGK1 Products)

Target Details

Background: Also known as ATP:3-phosphoglycerate 1-phosphotransferase (EC 2.7.2.3), this major enzyme in glycolysis catalyzes the reversible conversion of 1,3-diphosphoglycerate to 3-phosphoglycerate, generating one molecule of ATP. New blood vessel formation or angiogenesis is critical for tumor expansion and metastasis. Lay et al. (2000) showed that the plasmin reductase isolated from conditioned medium of fibrosarcoma cells is the glycolytic enzyme phosphoglycerate kinase. They concluded that phosphoglycerate kinase not only functions in glycolysis but is secreted by tumor cells and participates in the angiogenic process as a disulfide reductase.

UniProt: [P00558](#)

Pathways: [Cellular Glucan Metabolic Process](#)

Application Details

Application Notes: Titration of the PGK1 antibody may be required due to differences in protocols and secondary/substrate sensitivity. \. Western blot: 1:1000,IHC (Paraffin): 1:10-1:100,Immunofluorescence: 1:10-1:50,Flow Cytometry: 1:10-1:50

Restrictions: For Research Use only

Handling

Format: Liquid

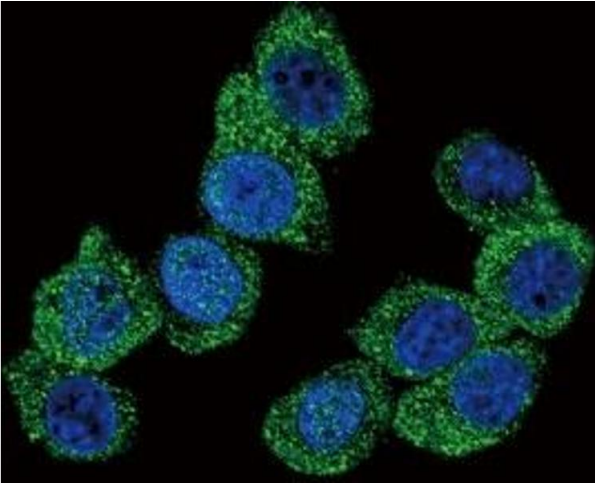
Buffer: In 1X PBS, pH 7.4, with 0.09 % sodium azide

Preservative: Sodium azide

Precaution of Use: This product contains Sodium azide: a POISONOUS AND HAZARDOUS SUBSTANCE which should be handled by trained staff only.

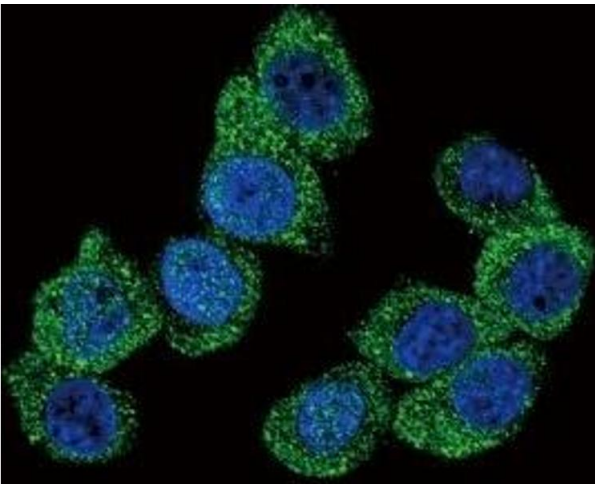
Storage: -20 °C

Storage Comment: Aliquot the PGK1 antibody and store frozen at -20°C or colder. Avoid repeated freeze-thaw cycles.



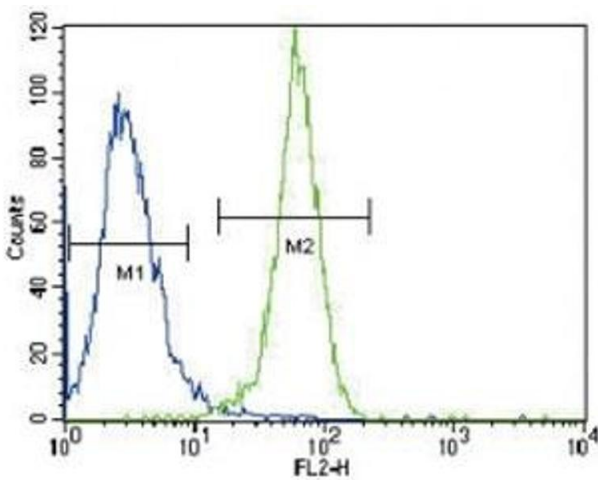
Immunofluorescence

Image 1. Confocal immunofluorescent analysis of PGK1 antibody with HeLa cells followed by Alexa Fluor 488-conjugated goat anti-rabbit IgG (green). DAPI was used as a nuclear counterstain (blue).



Immunofluorescence

Image 2. Confocal immunofluorescent analysis of PGK1 antibody with HeLa cells followed by Alexa Fluor 488-conjugated goat anti-rabbit IgG (green). DAPI was used as a nuclear counterstain (blue).



Flow Cytometry

Image 3. PGK1 antibody flow cytometric analysis of HeLa cells (right histogram) compared to a negative control (left histogram). FITC-conjugated goat-anti-rabbit secondary Ab was used for the analysis.

Please check the [product details page](#) for more images. Overall 9 images are available for ABIN3032224.