



[Go to Product page](#)

Datasheet for ABIN3032237
anti-PKM2 antibody (AA 476-505)

5 Images

Overview

Quantity:	0.2 mL
Target:	PKM2
Binding Specificity:	AA 476-505
Reactivity:	Human, Mouse, Rat, Primate
Host:	Rabbit
Clonality:	Polyclonal
Conjugate:	This PKM2 antibody is un-conjugated
Application:	Western Blotting (WB), Immunohistochemistry (IHC), ELISA, Immunofluorescence (IF)

Product Details

Immunogen:	A portion of amino acids 476-505 from the human protein was used as the immunogen for this PKM2 antibody.
Isotype:	Ig Fraction
Purification:	Purified

Target Details

Target:	PKM2
Alternative Name:	PKM2 (PKM2 Products)
Background:	PKM2 is a glycolytic enzyme that catalyzes the transfer of a phosphoryl group from phosphoenolpyruvate (PEP) to ADP, generating ATP. Stimulates POU5F1-mediated transcriptional activation. Plays a general role in caspase independent cell death of tumor cells.

Target Details

The ratio between the highly active tetrameric form and nearly inactive dimeric form determines whether glucose carbons are channeled to biosynthetic processes or used for glycolytic ATP production. The transition between the 2 forms contributes to the control of glycolysis and is important for tumor cell proliferation and survival. [UniProt]

UniProt: [P14618](#)

Pathways: [Warburg Effect](#)

Application Details

Application Notes: Titration of the PKM2 antibody may be required due to differences in protocols and secondary/substrate sensitivity.\. Immunofluorescence: 1:200,Western blot: 1:1000,IHC (Paraffin): 1:50-1:1:100

Restrictions: For Research Use only

Handling

Format: Liquid

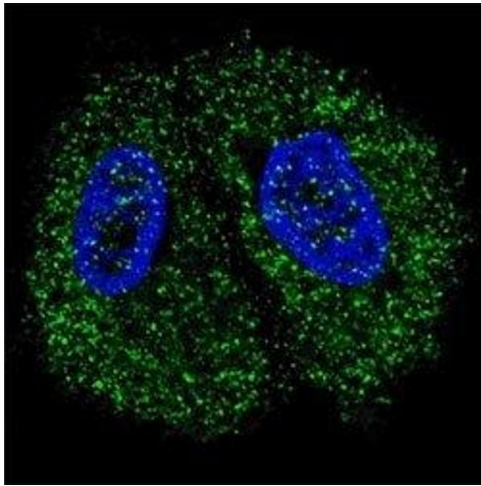
Buffer: In 1X PBS pH 7.4 with 0.09 % sodium azide

Preservative: Sodium azide

Precaution of Use: This product contains Sodium azide: a POISONOUS AND HAZARDOUS SUBSTANCE which should be handled by trained staff only.

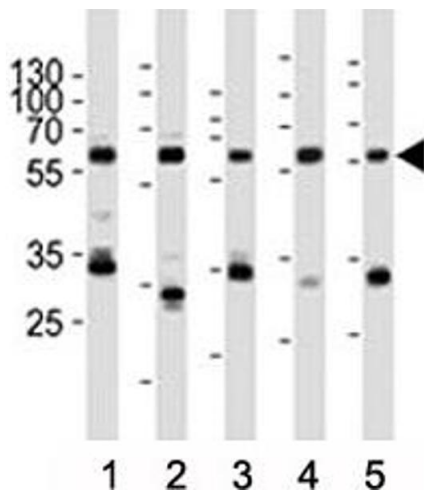
Storage: -20 °C

Storage Comment: Aliquot the PKM2 antibody and store frozen at -20°C or colder. Avoid repeated freeze-thaw cycles.



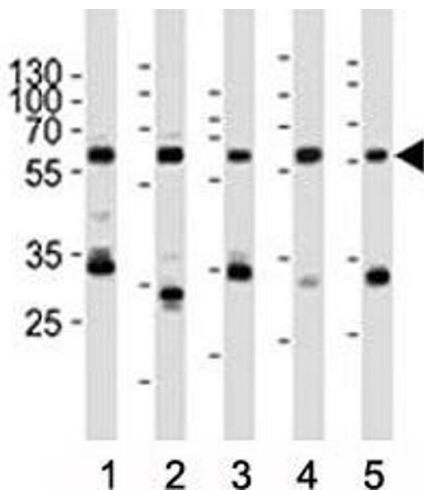
Immunofluorescence

Image 1. Fluorescent confocal image of MCF7 cells stained with PKM2 antibody. Alexa Fluor 488 conjugated donkey anti-rabbit secondary Ab (green) was used (1:1000, 1h). Nuclei were counterstained with Hoechst 33342 (blue) (10 ug/ml, 5 min). PKM2 is localized to the



Western Blotting

Image 2. Western blot analysis of lysate from (1) HeLa, (2) rat PC-12, (3) Ramos, (4) mouse NIH3T3 cell line, (5) mouse brain tissue lysate using Pyruvate Kinase/ PKM2 antibody at 1:1000. Predicted molecular weight ~ 60 kDa.



Western Blotting

Image 3. Western blot analysis of lysate from (1) HeLa, (2) rat PC-12, (3) Ramos, (4) mouse NIH3T3 cell line, (5) mouse brain tissue lysate using Pyruvate Kinase/ PKM2 antibody at 1:1000. Predicted molecular weight ~ 60 kDa.

Please check the [product details page](#) for more images. Overall 5 images are available for ABIN3032237.