

Datasheet for ABIN3032238  
**anti-PKM2 antibody (AA 460-489)**



[Go to Product page](#)

3 Images

## Overview

Quantity:	0.4 mL
Target:	PKM2
Binding Specificity:	AA 460-489
Reactivity:	Human
Host:	Rabbit
Clonality:	Polyclonal
Conjugate:	This PKM2 antibody is un-conjugated
Application:	Western Blotting (WB), Immunohistochemistry (IHC), ELISA

## Product Details

Immunogen:	A portion of amino acids 460-489 from the human protein was used as the immunogen for this PKM2 antibody.
Isotype:	Ig Fraction
Cross-Reactivity (Details):	Expected species reactivity: Rabbit
Purification:	Purified

## Target Details

Target:	PKM2
Alternative Name:	PKM2 ( <a href="#">PKM2 Products</a> )
Background:	PKM2 is a pyruvate kinase that catalyzes the production of phosphoenolpyruvate from pyruvate

## Target Details

and ATP. This protein has been shown to interact with thyroid hormone, and thus may mediate cellular metabolic effects induced by thyroid hormones. This protein has been found to bind Opa protein, a bacterial outer membrane protein involved in gonococcal adherence to and invasion of human cells, suggesting a role of this protein in bacterial pathogenesis.

UniProt: [P14618](#)

Pathways: [Warburg Effect](#)

## Application Details

Application Notes: Titration of the PKM2 antibody may be required due to differences in protocols and secondary/substrate sensitivity.\. Western blot: 1:1000,IHC (Paraffin): 1:10-1:50

Restrictions: For Research Use only

## Handling

Format: Liquid

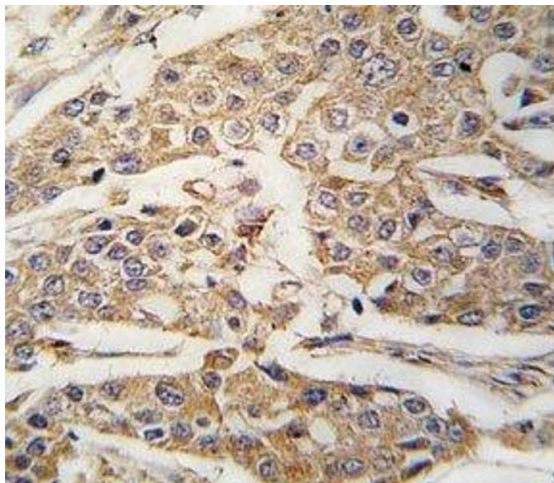
Buffer: In 1X PBS, pH 7.4, with 0.09 % sodium azide

Preservative: Sodium azide

Precaution of Use: This product contains Sodium azide: a POISONOUS AND HAZARDOUS SUBSTANCE which should be handled by trained staff only.

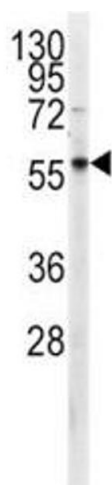
Storage: -20 °C

Storage Comment: Aliquot the PKM2 antibody and store frozen at -20°C or colder. Avoid repeated freeze-thaw cycles.



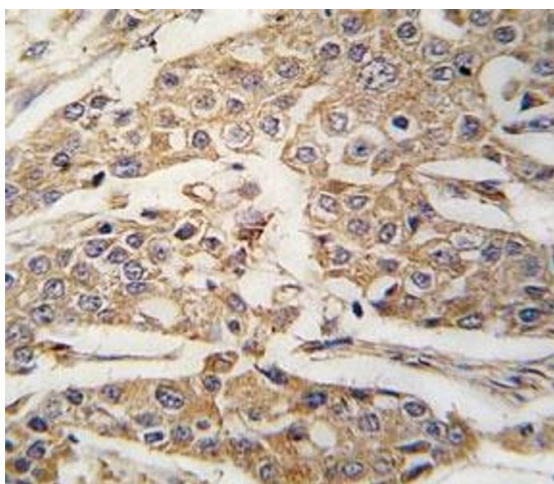
#### Immunohistochemistry

**Image 1.** IHC analysis of FFPE human breast carcinoma tissue stained with PKM2 antibody



#### Western Blotting

**Image 2.** Western blot analysis of PKM2 antibody and CEM lysate. Predicted molecular weight ~ 60 kDa.



#### Immunohistochemistry

**Image 3.** IHC analysis of FFPE human breast carcinoma tissue stained with PKM2 antibody