



[Go to Product page](#)

Datasheet for ABIN3032239  
**anti-PKM2 antibody (AA 116-145)**

5 Images

### Overview

Quantity:	0.4 mL
Target:	PKM2
Binding Specificity:	AA 116-145
Reactivity:	Human
Host:	Rabbit
Clonality:	Polyclonal
Conjugate:	This PKM2 antibody is un-conjugated
Application:	Western Blotting (WB), Immunohistochemistry (IHC), ELISA, Flow Cytometry (FACS)

### Product Details

Immunogen:	A portion of amino acids 116-145 from the human protein was used as the immunogen for this PKM2 antibody.
Isotype:	Ig Fraction
Cross-Reactivity (Details):	Expected species reactivity: Mouse, Rabbit, Rat
Purification:	Purified

### Target Details

Target:	PKM2
Alternative Name:	PKM2 ( <a href="#">PKM2 Products</a> )
Background:	PKM2 encodes a protein involved in glycolysis. The encoded protein is a pyruvate kinase that

## Target Details

---

catalyzes the transfer of a phosphoryl group from phosphoenolpyruvate to ADP, generating ATP and pyruvate. This protein has been shown to interact with thyroid hormone and may mediate cellular metabolic effects induced by thyroid hormones. This protein has been found to bind Opa protein, a bacterial outer membrane protein involved in gonococcal adherence to and invasion of human cells, suggesting a role of this protein in bacterial pathogenesis.

UniProt: [P14618](#)

Pathways: [Warburg Effect](#)

## Application Details

---

Application Notes: Titration of the PKM2 antibody may be required due to differences in protocols and secondary/substrate sensitivity.\. Western blot: 1:1000,IHC (Paraffin): 1:50-1:100,Flow Cytometry: 1:10-1:50

Restrictions: For Research Use only

## Handling

---

Format: Liquid

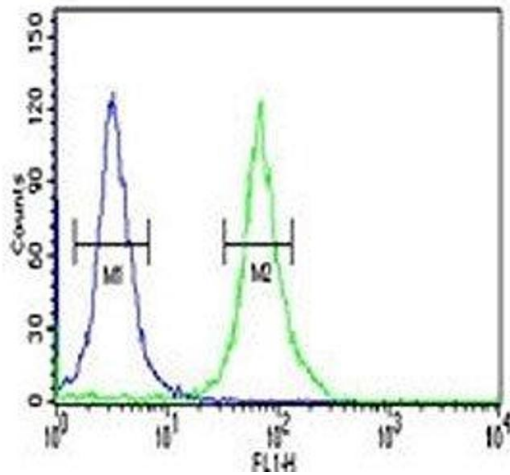
Buffer: In 1X PBS, pH 7.4, with 0.09 % sodium azide

Preservative: Sodium azide

Precaution of Use: This product contains Sodium azide: a POISONOUS AND HAZARDOUS SUBSTANCE which should be handled by trained staff only.

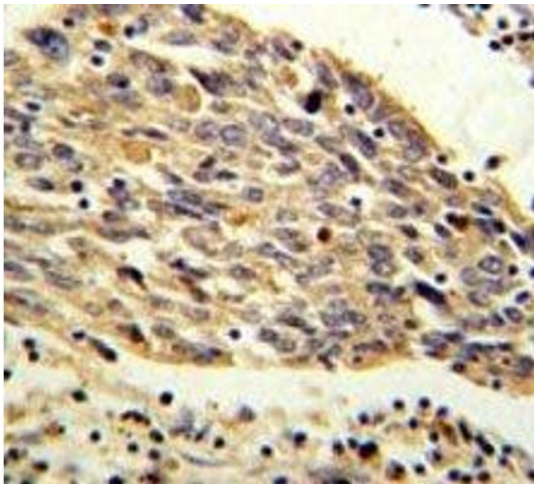
Storage: -20 °C

Storage Comment: Aliquot the PKM2 antibody and store frozen at -20°C or colder. Avoid repeated freeze-thaw cycles.



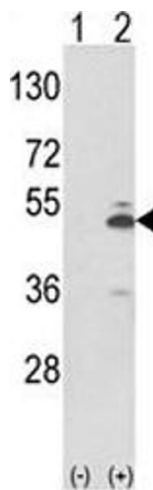
### Flow Cytometry

**Image 1.** PKM2 antibody flow cytometric analysis of 293 cells (right histogram) compared to a negative control (left histogram). FITC-conjugated goat-anti-rabbit secondary Ab was used for the analysis.



### Immunohistochemistry

**Image 2.** PKM2 antibody IHC analysis in formalin fixed and paraffin embedded human lung carcinoma.



### Western Blotting

**Image 3.** Western blot analysis of PKM2 antibody and 293 cell lysate (2 ug/lane) either nontransfected (Lane 1) or transiently transfected with the PKM2 gene (2). Predicted molecular weight ~ 60 kDa.

Please check the [product details page](#) for more images. Overall 5 images are available for ABIN3032239.