

Datasheet for ABIN3032240  
**anti-PLGF antibody (C-Term)**



[Go to Product page](#)

2 Images

## Overview

Quantity:	100 µg
Target:	PLGF (PGF)
Binding Specificity:	C-Term
Reactivity:	Human
Host:	Rabbit
Clonality:	Polyclonal
Conjugate:	This PLGF antibody is un-conjugated
Application:	Western Blotting (WB)

## Product Details

Immunogen:	An amino acid sequence from the C-terminus of human PLGF (REKMKPERCGDAVPRR) was used as the immunogen for this PLGF antibody.
Isotype:	IgG
Purification:	Antigen affinity

## Target Details

Target:	PLGF (PGF)
Alternative Name:	PLGF ( <a href="#">PGF Products</a> )
Background:	Placental growth factor(PGF, also known as PLGF) codes for an angiogenic factor expressed in placental tissue that is similar to vascular permeability factor/vascular endothelial growth factor(VPF/VEGF). It is a glycosylated dimeric secreted protein able to stimulate endothelial cell

## Target Details

growth in vitro. PGF is located on chromosome 14 and has been conserved in evolution. It belongs to the family of vascular endothelial growth factors(VEGFs) and binds to the flt-1 VEGF receptor. PLGF-2, which is a PLGF isoform, binds neuropilin-1 and 2 in a heparin-dependent manner. PGF regulates inter- and intra molecular cross talk between the VEGF RTKs Flt1 and Flk1 and stimulates the phosphorylation of specific Flt1 tyrosine residues and the expression of distinct downstream target genes. Moreover, it plays an important role in pathological angiogenic events and with exerting its biological activities through binding to VEGFR1.

UniProt: [P49763](#)

Pathways: [VEGFR1 Specific Signals](#)

## Application Details

Application Notes: The stated application concentrations are suggested starting amounts. Titration of the PLGF antibody may be required due to differences in protocols and secondary/substrate sensitivity.\. Western blot: 0.5-1 µg/mL

Restrictions: For Research Use only

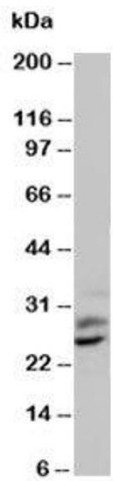
## Handling

Buffer: 0.5 mg/mL if reconstituted with 0.2 mL sterile DI water

Storage: -20 °C

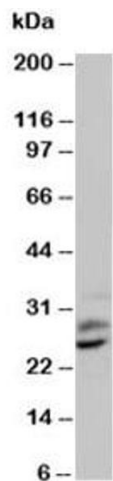
Storage Comment: After reconstitution, the PLGF antibody can be stored for up to one month at 4°C. For long-term, aliquot and store at -20°C. Avoid repeated freezing and thawing.

## Images



### Western Blotting

**Image 1.** Western blot testing of PLGF antibody and human placenta tissue lysate



Western Blotting

**Image 2.** Western blot testing of PLGF antibody and human placenta tissue lysate