

Datasheet for ABIN3032243
anti-PLAT antibody (AA 371-399)

5 Images

[Go to Product page](#)

Overview

Quantity:	0.4 mL
Target:	PLAT
Binding Specificity:	AA 371-399
Reactivity:	Human
Host:	Rabbit
Clonality:	Polyclonal
Conjugate:	This PLAT antibody is un-conjugated
Application:	Western Blotting (WB), ELISA, Immunohistochemistry (IHC), Flow Cytometry (FACS)

Product Details

Immunogen:	A portion of amino acids 371-399 from the human protein was used as the immunogen for this tPA antibody.
Isotype:	Ig Fraction
Purification:	Purified

Target Details

Target:	PLAT
Alternative Name:	TPA (PLAT Products)
Background:	TPA is a tissue-type plasminogen activator, a secreted serine protease which converts the proenzyme plasminogen to plasmin, a fibrinolytic enzyme. Tissue-type plasminogen activator is synthesized as a single chain which is cleaved by plasmin to a two chain disulfide linked

Target Details

protein. This enzyme plays a role in cell migration and tissue remodeling. Increased enzymatic activity causes hyperfibrinolysis, which manifests as excessive bleeding, decreased activity leads to hypofibrinolysis which can result in thrombosis or embolism.

UniProt: [P00750](#)

Pathways: [Autophagy](#), [Smooth Muscle Cell Migration](#), [Platelet-derived growth Factor Receptor Signaling](#), [SARS-CoV-2 Protein Interactome](#)

Application Details

Application Notes: Titration of the tPA antibody may be required due to differences in protocols and secondary/substrate sensitivity.\. Western blot: 1:1000,IHC (Paraffin): 1:10-1:50,Flow Cytometry: 1:10-1:50

Restrictions: For Research Use only

Handling

Format: Liquid

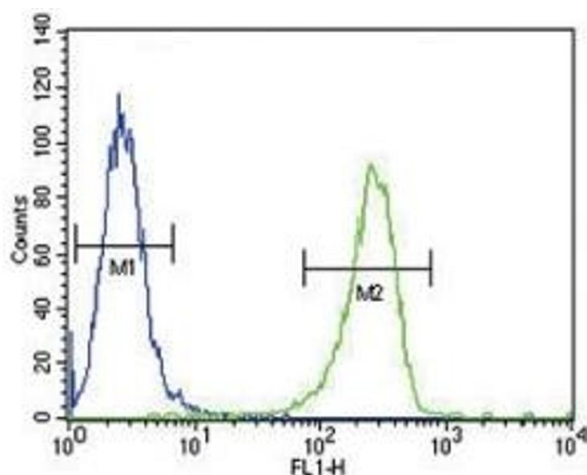
Buffer: In 1X PBS, pH 7.4, with 0.09 % sodium azide

Preservative: Sodium azide

Precaution of Use: This product contains Sodium azide: a POISONOUS AND HAZARDOUS SUBSTANCE which should be handled by trained staff only.

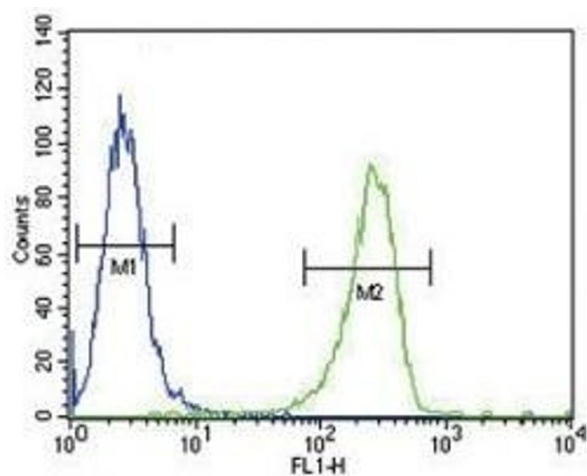
Storage: -20 °C

Storage Comment: Aliquot the tPA antibody and store frozen at -20°C or colder. Avoid repeated freeze-thaw cycles.



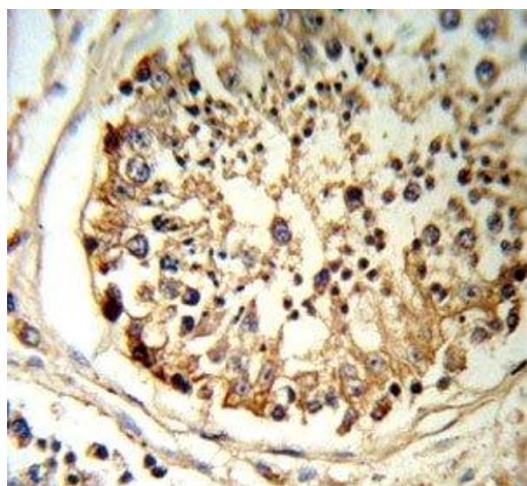
Flow Cytometry

Image 1. TPA antibody flow cytometric analysis of A2058 cells (green) compared to a [negative control](#) (blue). FITC-conjugated goat-anti-rabbit secondary Ab was used for the analysis.



Flow Cytometry

Image 2. TPA antibody flow cytometric analysis of A2058 cells (green) compared to a negative control (blue). FITC-conjugated goat-anti-rabbit secondary Ab was used for the analysis.



Immunohistochemistry

Image 3. TPA antibody IHC analysis in formalin fixed and paraffin embedded human testis tissue.

Please check the [product details page](#) for more images. Overall 5 images are available for ABIN3032243.