

Datasheet for ABIN3032244
anti-PLAU antibody (AA 396-426)

6 Images

[Go to Product page](#)

Overview

Quantity:	0.4 mL
Target:	PLAU
Binding Specificity:	AA 396-426
Reactivity:	Human
Host:	Rabbit
Clonality:	Polyclonal
Conjugate:	This PLAU antibody is un-conjugated
Application:	Western Blotting (WB), ELISA, Immunohistochemistry (IHC), Flow Cytometry (FACS), Immunofluorescence (IF)

Product Details

Immunogen:	A portion of amino acids 396-426 from the human protein was used as the immunogen for this UPA antibody.
Isotype:	Ig Fraction
Purification:	Purified

Target Details

Target:	PLAU
Alternative Name:	UPA (PLAU Products)
Background:	PLAU, a member of the peptidase family S1, is a potent plasminogen activator and is clinically used for therapy of thrombolytic disorders. PLAU specifically cleaves the Arg-Val bond in

Target Details

plasminogen to form plasmin. The protein is found in high and low molecular mass forms. Each consists of two chains, A and B. The high molecular mass form contains a long chain A. Cleavage occurs after residue 155 in the low molecular mass form to yield a short A1 chain. The protein is used in Pulmonary Embolism (PE) to initiate fibrinolysis. Structurally, PLAUI contains 1 EGF-like domain and 1 kringle domain.

UniProt: [P00749](#)

Pathways: [Cellular Response to Molecule of Bacterial Origin](#), [Carbohydrate Homeostasis](#), [Autophagy](#), [Smooth Muscle Cell Migration](#)

Application Details

Application Notes: Titration of the UPA antibody may be required due to differences in protocols and secondary/substrate sensitivity. Western blot: 1:1000, IHC (Paraffin): 1:10-1:50, Immunofluorescence: 1:10-1:50, Flow Cytometry: 1:10-1:50

Restrictions: For Research Use only

Handling

Format: Liquid

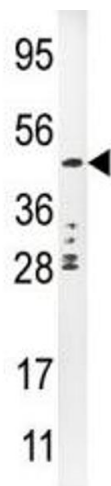
Buffer: In 1X PBS, pH 7.4, with 0.09 % sodium azide

Preservative: Sodium azide

Precaution of Use: This product contains Sodium azide: a POISONOUS AND HAZARDOUS SUBSTANCE which should be handled by trained staff only.

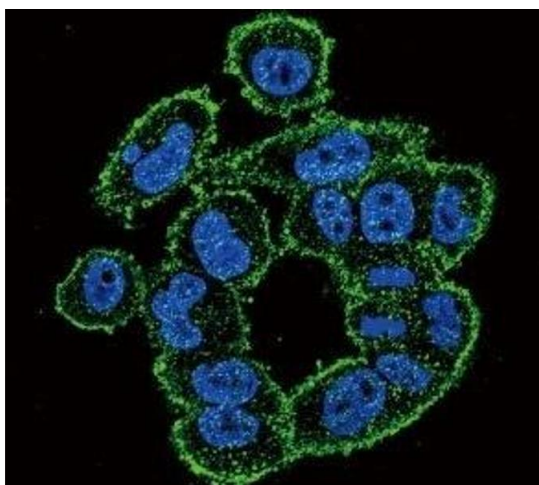
Storage: -20 °C

Storage Comment: Aliquot the UPA antibody and store frozen at -20°C or colder. Avoid repeated freeze-thaw cycles.



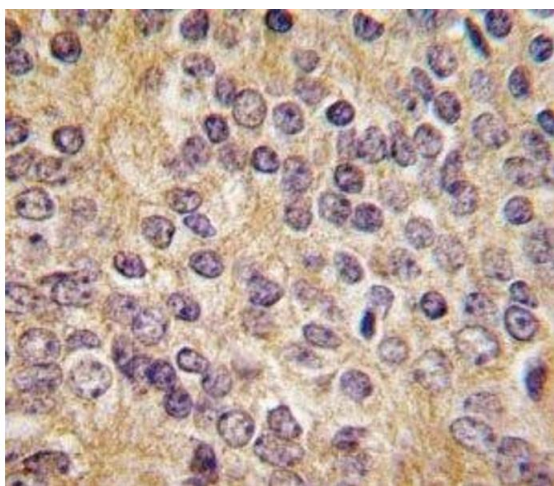
Western Blotting

Image 1. Western blot analysis of UPA antibody and CEM lysate



Immunofluorescence

Image 2. Confocal immunofluorescent analysis of UPA antibody with A2058 cells followed by Alexa Fluor 488-conjugated goat anti-rabbit IgG (green). DAPI was used as a nuclear counterstain (blue).



Immunohistochemistry

Image 3. IHC analysis of FFPE human prostate carcinoma tissue stained with UPA antibody

Please check the [product details page](#) for more images. Overall 6 images are available for ABIN3032244.