

Datasheet for ABIN3032248  
**anti-PDGFC antibody (AA 74-103)**

## 3 Images

[Go to Product page](#)

## Overview

Quantity:	0.4 mL
Target:	PDGFC
Binding Specificity:	AA 74-103
Reactivity:	Human
Host:	Rabbit
Clonality:	Polyclonal
Conjugate:	This PDGFC antibody is un-conjugated
Application:	Immunohistochemistry (IHC), Western Blotting (WB), ELISA

## Product Details

Immunogen:	A portion of amino acids 74-103 from the human protein was used as the immunogen for this PDGFC antibody.
Isotype:	Ig Fraction
Cross-Reactivity (Details):	Expected species reactivity: Chicken, Mouse
Purification:	Purified

## Target Details

Target:	PDGFC
Alternative Name:	PDGFC ( <a href="#">PDGFC Products</a> )
Target Type:	Viral Protein

## Target Details

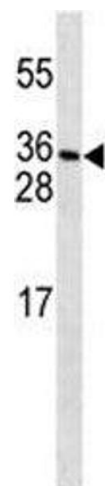
Background:	Platelet-derived growth factor C (PDGFC) is a member of the platelet-derived growth factor family. The four members of this family are mitogenic factors for cells of mesenchymal origin and are characterized by a motif of eight cysteines. PDGFC seems to form only homodimers, where the dimers are connected by disulfide bonds. It differs from the platelet-derived growth factor alpha (PDGFA) and beta (PDGFB) in having an unusual N-terminal domain, the CUB domain.
UniProt:	<a href="#">Q9NRA1</a>
Pathways:	<a href="#">RTK Signaling</a> , <a href="#">Platelet-derived growth Factor Receptor Signaling</a>

## Application Details

Application Notes:	Titration of the PDGFC antibody may be required due to differences in protocols and secondary/substrate sensitivity.\. Western blot: 1:1000,IHC (Paraffin): 1:10-1:50
Restrictions:	For Research Use only

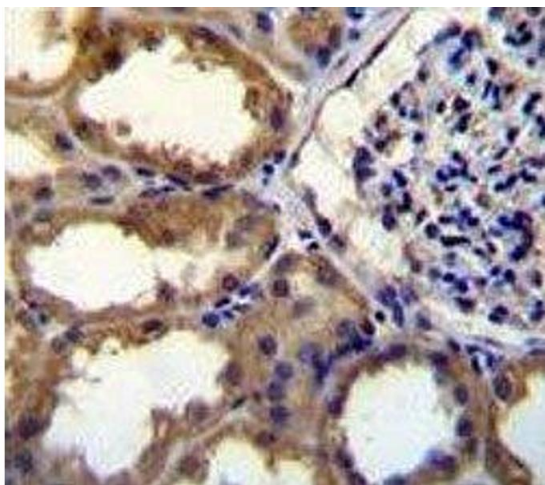
## Handling

Format:	Liquid
Buffer:	In 1X PBS pH 7.4 with 0.09 % sodium azide
Preservative:	Sodium azide
Precaution of Use:	This product contains Sodium azide: a POISONOUS AND HAZARDOUS SUBSTANCE which should be handled by trained staff only.
Storage:	-20 °C
Storage Comment:	Aliquot the PDGFC antibody and store frozen at -20°C or colder. Avoid repeated freeze-thaw cycles.



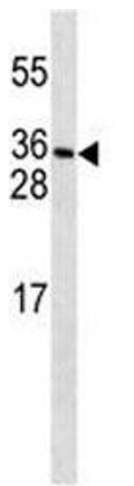
#### Western Blotting

**Image 1.** PDGFC antibody western blot analysis in MDA-MB231 lysate.



#### Immunohistochemistry

**Image 2.** PDGFC antibody immunohistochemistry analysis in formalin fixed and paraffin embedded human kidney tissue.



#### Western Blotting

**Image 3.** PDGFC antibody western blot analysis in MDA-MB231 lysate.