

Datasheet for ABIN3032267
anti-PLK2 antibody (C-Term)

7 Images

[Go to Product page](#)

Overview

| | |
|----------------------|--|
| Quantity: | 100 µg |
| Target: | PLK2 |
| Binding Specificity: | C-Term |
| Reactivity: | Human, Mouse, Rat |
| Host: | Rabbit |
| Clonality: | Polyclonal |
| Conjugate: | This PLK2 antibody is un-conjugated |
| Application: | Western Blotting (WB), Immunohistochemistry (Paraffin-embedded Sections) (IHC (p)), Immunocytochemistry (ICC), Flow Cytometry (FACS) |

Product Details

| | |
|---------------|---|
| Immunogen: | An amino acid sequence from the C-terminus of human Polo-like kinase 2 (SSELKNRMEYALNMLLQRCN) was used as the immunogen for this PLK2 antibody. |
| Isotype: | IgG |
| Purification: | Antigen affinity |

Target Details

| | |
|-------------------|---|
| Target: | PLK2 |
| Alternative Name: | PLK2 (PLK2 Products) |
| Background: | Polo-like kinase 2, also known as SNK, is an enzyme that in humans is encoded by the PLK2 gene. It is a member of the polo family of serine/threonine protein kinases that have a role in |

Target Details

normal cell division. The International Radiation Hybrid Mapping Consortium mapped the gene to chromosome 5. Polo-like kinase 2 is involved in synaptic plasticity, centriole duplication and G1/S phase transition. This gene plays a key role in synaptic plasticity and memory by regulating the Ras and Rap protein signalin: required for overactivity-dependent spine remodeling by phosphorylating the Ras activator RASGRF1 and the Rap inhibitor SIPA1L1 leading to their degradation by the proteasome.

UniProt: [Q9NYY3](#)

Application Details

Application Notes: The stated application concentrations are suggested starting amounts. Titration of the PLK2 antibody may be required due to differences in protocols and secondary/substrate sensitivity.\.
Western blot: 0.5-1 µg/mL,IHC (Paraffin): 0.5-1 µg/mL,Immunocytochemistry: 0.5-1 µg/mL,FACS: 1-3 µg/10⁶ cells

Restrictions: For Research Use only

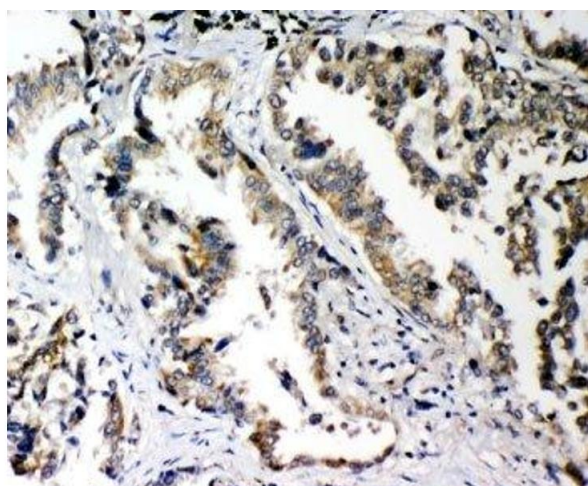
Handling

Buffer: 0.5 mg/mL if reconstituted with 0.2 mL sterile DI water

Storage: -20 °C

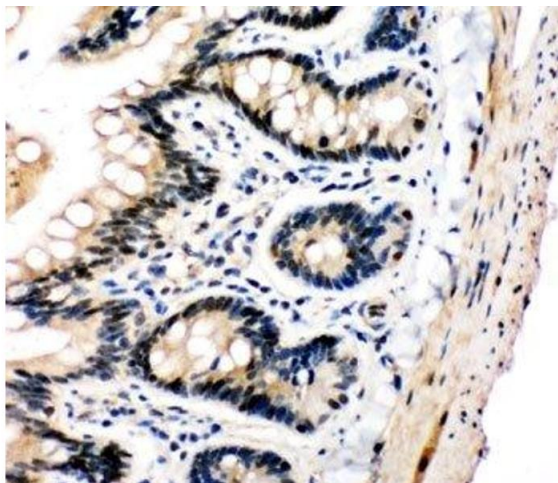
Storage Comment: After reconstitution, the PLK2 antibody can be stored for up to one month at 4°C. For long-term, aliquot and store at -20°C. Avoid repeated freezing and thawing.

Images



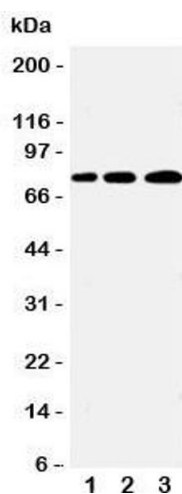
Immunohistochemistry

Image 1. IHC-P: PLK2 antibody testing of human lung cancer tissue



Immunohistochemistry

Image 2. IHC-P: PLK2 antibody testing of rat intestine tissue



Western Blotting

Image 3. Western blot testing of PLK2 antibody and Lane 1: A431; 2: 293T; 3: COLO320 cell lysate

Please check the [product details page](#) for more images. Overall 7 images are available for ABIN3032267.