

Datasheet for ABIN3032299

anti-PRDM16 antibody**2** Images[Go to Product page](#)

Overview

Quantity:	0.4 mL
Target:	PRDM16
Reactivity:	Human, Mouse
Host:	Rabbit
Clonality:	Polyclonal
Conjugate:	This PRDM16 antibody is un-conjugated
Application:	ELISA, Western Blotting (WB)

Product Details

Immunogen:	This PRDM16 antibody was produced from a rabbit immunized with a KLH conjugated synthetic peptide between 771-804 amino acids from the Central region of human PRDM16.
Isotype:	Ig Fraction
Purification:	Antigen affinity purified

Target Details

Target:	PRDM16
Alternative Name:	PRDM16 (PRDM16 Products)
Background:	Binds DNA and functions as a transcriptional regulator. Functions in the differentiation of brown adipose tissue (BAT) which is specialized in dissipating chemical energy in the form of heat in response to cold or excess feeding while white adipose tissue (WAT) is specialized in the storage of excess energy and the control of systemic metabolism. Together with CEBPB,

Target Details

regulates the differentiation of myoblastic precursors into brown adipose cells. Functions also as a repressor of TGF-beta signaling. Isoform 4 may regulate granulocytes differentiation.

UniProt: [Q9HAZ2](#)

Pathways: [Stem Cell Maintenance](#), [Brown Fat Cell Differentiation](#)

Application Details

Application Notes: Titration of the PRDM16 antibody may be required due to differences in protocols and secondary/substrate sensitivity.\. Western blot: 1:1000

Restrictions: For Research Use only

Handling

Format: Liquid

Buffer: In 1X PBS, pH 7.4, with 0.09 % sodium azide

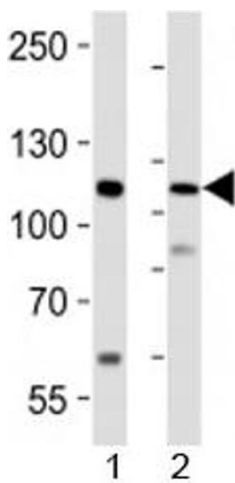
Preservative: Sodium azide

Precaution of Use: This product contains Sodium azide: a POISONOUS AND HAZARDOUS SUBSTANCE which should be handled by trained staff only.

Storage: -20 °C

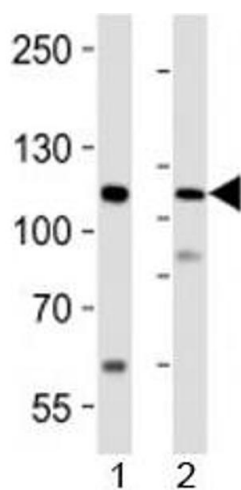
Storage Comment: Aliquot the PRDM16 antibody and store frozen at -20°C or colder. Avoid repeated freeze-thaw cycles.

Images



Western Blotting

Image 1. Western blot analysis of lysate from 1) human LNCaP cell line and 2) mouse lung tissue using PRDM16 antibody at 1:1000.



Western Blotting

Image 2. Western blot analysis of lysate from 1) human LNCaP cell line and 2) mouse lung tissue using PRDM16 antibody at 1:1000.