

Datasheet for ABIN3032300
anti-PRDM2 antibody (AA 1-347)[Go to Product page](#)

6 Images

Overview

| | |
|----------------------|--|
| Quantity: | 0.4 mL |
| Target: | PRDM2 |
| Binding Specificity: | AA 1-347 |
| Reactivity: | Human, Mouse |
| Host: | Mouse |
| Clonality: | Monoclonal |
| Conjugate: | This PRDM2 antibody is un-conjugated |
| Application: | ELISA, Western Blotting (WB), Chromatin Immunoprecipitation (ChIP) |

Product Details

| | |
|---------------|---|
| Immunogen: | Purified recombinant GST fusion protein encoding aa 1-347 of human RIZ1. This RIZ1 antibody is specific and does not recognize the beta isoform (RIZ2). |
| Clone: | 33AT1045 |
| Isotype: | IgG1 |
| Purification: | Purified |

Target Details

| | |
|-------------------|---|
| Target: | PRDM2 |
| Alternative Name: | RIZ1 (PRDM2 Products) |
| Background: | This tumor suppressor gene is a member of a nuclear histone/protein methyltransferase |

Target Details

superfamily. It encodes a zinc finger protein that can bind to retinoblastoma protein, estrogen receptor, and the TPA-responsive element (MTE) of the heme-oxygenase-1 gene. Although the functions of this protein have not been fully characterized, it may (1) play a role in transcriptional regulation during neuronal differentiation and pathogenesis of retinoblastoma, (2) act as a transcriptional activator of the heme-oxygenase-1 gene, and (3) be a specific effector of estrogen action. Multiple transcript variants encoding different isoforms have been found for this gene.

UniProt: [Q13029](#)

Application Details

Application Notes: Titration of the RIZ1 antibody may be required due to differences in protocols and secondary/substrate sensitivity.\. Western blot: 1:1000,ChIP: 1:100

Restrictions: For Research Use only

Handling

Format: Liquid

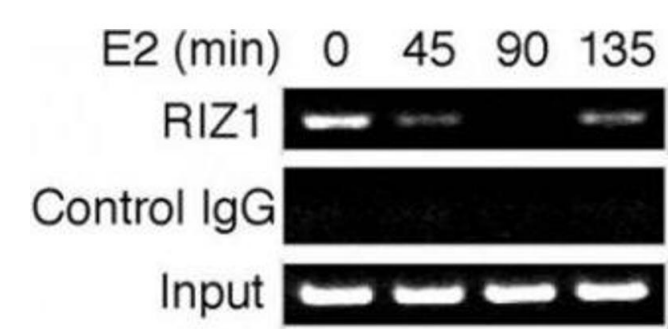
Buffer: In 1X PBS pH 7.4 with 0.09 % sodium azide

Preservative: Sodium azide

Precaution of Use: This product contains Sodium azide: a POISONOUS AND HAZARDOUS SUBSTANCE which should be handled by trained staff only.

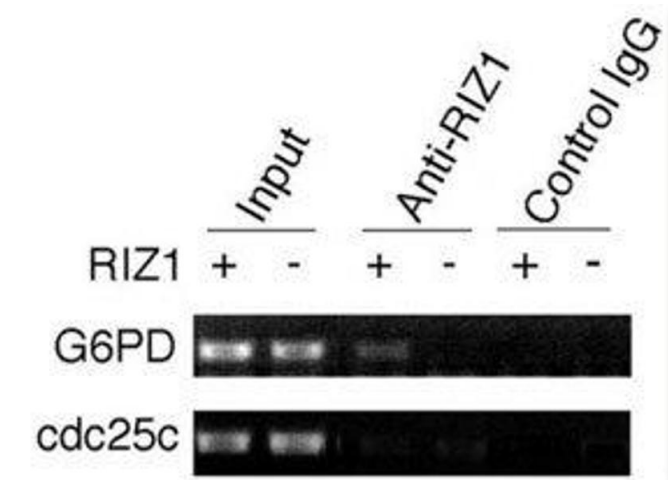
Storage: -20 °C

Storage Comment: Aliquot the RIZ1 antibody and store frozen at -20°C or colder. Avoid repeated freeze-thaw cycles.



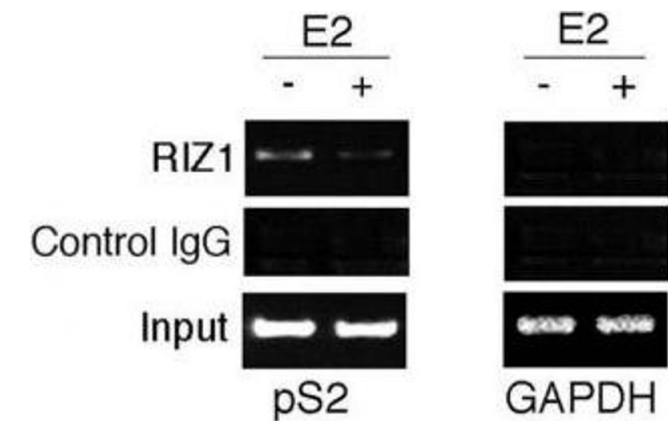
Chromatin Immunoprecipitation

Image 1. Time course analysis of RIZ1 binding to the pS2 gene promoter. MCF7 cells treated with E2 for different periods of time, as indicated at the top of each lane, were processed for ChIP analysis. Immunoprecipitation was performed with RIZ1 antibody and contr



Chromatin Immunoprecipitation

Image 2. ChIP analysis was performed on RIZ1 knockout mouse embryonic fibroblasts with RIZ1 antibody. Immunoprecipitated chromatin DNA was analyzed by PCR with primers in the G6pd promoter region and in the Cdc25c promoter region.



Chromatin Immunoprecipitation

Image 3. ChIP analysis: soluble chromatin was prepared from MCF7 cells treated/untreated with E2 for 45 min. Immunoprecipitation was performed with RIZ1 antibody. DNA extractions amplified using primer sets that cover the pS2 gene promoter region or the GAPDH gene

Please check the [product details page](#) for more images. Overall 6 images are available for ABIN3032300.