

Datasheet for ABIN3032314
anti-Prohibitin antibody (AA 92-121)[Go to Product page](#)

5 Images

Overview

Quantity:	0.4 mL
Target:	Prohibitin (PHB)
Binding Specificity:	AA 92-121
Reactivity:	Human
Host:	Rabbit
Clonality:	Polyclonal
Conjugate:	This Prohibitin antibody is un-conjugated
Application:	Western Blotting (WB), Immunohistochemistry (IHC), ELISA, Flow Cytometry (FACS)

Product Details

Immunogen:	A portion of amino acids 92-121 from the human protein was used as the immunogen for this Prohibitin antibody.
Isotype:	Ig Fraction
Cross-Reactivity (Details):	Expected species reactivity: Bovine, Chicken
Purification:	Antigen affinity purified

Target Details

Target:	Prohibitin (PHB)
Alternative Name:	Prohibitin (PHB Products)
Background:	Prohibitin is an evolutionarily conserved protein that is ubiquitously expressed. It is thought to

Target Details

be a negative regulator of cell proliferation and may be a tumor suppressor. Mutations have been linked to sporadic breast cancer. Prohibitin is expressed as two transcripts with varying lengths of 3' untranslated region.

UniProt: [P35232](#)

Pathways: [Intracellular Steroid Hormone Receptor Signaling Pathway](#), [Regulation of Intracellular Steroid Hormone Receptor Signaling](#)

Application Details

Application Notes: Titration of the Prohibitin antibody may be required due to differences in protocols and secondary/substrate sensitivity.\. Western blot: 1:1000,IHC (Paraffin): 1:50-1:100,Flow Cytometry: 1:10-1:50

Restrictions: For Research Use only

Handling

Format: Liquid

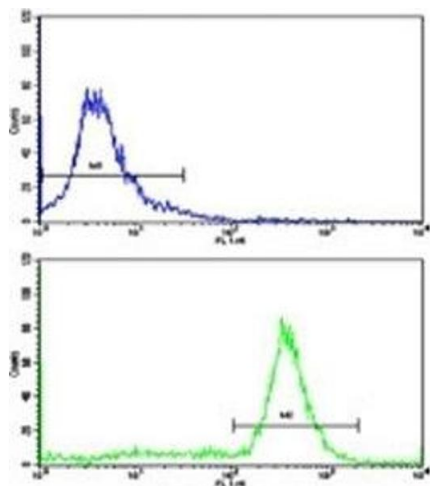
Buffer: In 1X PBS, pH 7.4, with 0.09 % sodium azide

Preservative: Sodium azide

Precaution of Use: This product contains Sodium azide: a POISONOUS AND HAZARDOUS SUBSTANCE which should be handled by trained staff only.

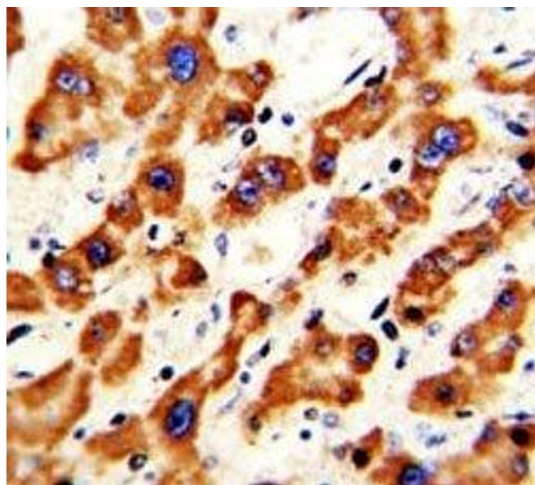
Storage: -20 °C

Storage Comment: Aliquot the Prohibitin antibody and store frozen at -20°C or colder. Avoid repeated freeze-thaw cycles.



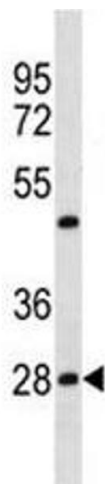
Flow Cytometry

Image 1. Flow cytometric analysis of ATDC5 cells using Prohibitin antibody (green) compared to a negative control (blue). FITC-conjugated goat-anti-rabbit secondary Ab was used for the analysis.



Immunohistochemistry

Image 2. IHC analysis of FFPE human hepatocarcinoma with Prohibitin antibody



Western Blotting

Image 3. Prohibitin antibody western blot analysis in HepG2 lysate. Predicted molecular weight ~29 kDa.

Please check the [product details page](#) for more images. Overall 5 images are available for ABIN3032314.