

Datasheet for ABIN3032316
anti-Prohibitin antibody (AA 89-117)

5 Images

[Go to Product page](#)

Overview

Quantity:	0.4 mL
Target:	Prohibitin (PHB)
Binding Specificity:	AA 89-117
Reactivity:	Human
Host:	Rabbit
Clonality:	Polyclonal
Conjugate:	This Prohibitin antibody is un-conjugated
Application:	Western Blotting (WB), Immunohistochemistry (IHC), ELISA, Immunofluorescence (IF), Flow Cytometry (FACS)

Product Details

Immunogen:	A portion of amino acids 89-117 from the human protein was used as the immunogen for this PHB antibody.
Isotype:	Ig Fraction
Cross-Reactivity (Details):	Expected species reactivity: Bovine, Chicken
Purification:	Purified

Target Details

Target:	Prohibitin (PHB)
Alternative Name:	PHB (PHB Products)

Target Details

Background: Prohibitin is an evolutionarily conserved protein that is ubiquitously expressed. It is thought to be a negative regulator of cell proliferation and may be a tumor suppressor. Mutations have been linked to sporadic breast cancer. Prohibitin is expressed as two transcripts with varying lengths of 3' untranslated region.

UniProt: [P35232](#)

Pathways: [Intracellular Steroid Hormone Receptor Signaling Pathway](#), [Regulation of Intracellular Steroid Hormone Receptor Signaling](#)

Application Details

Application Notes: Titration of the PHB antibody may be required due to differences in protocols and secondary/substrate sensitivity.\. IHC (Paraffin): 1:10-1:50,Western blot: 1:1000,Immunofluorescence: 1:10-1:50,Flow Cytometry: 1:10-1:50

Restrictions: For Research Use only

Handling

Format: Liquid

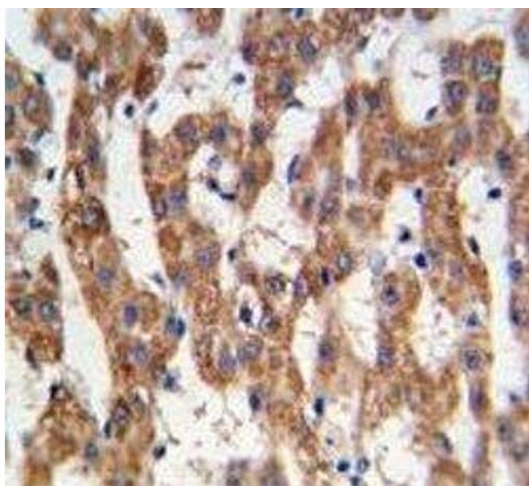
Buffer: In 1X PBS, pH 7.4, with 0.09 % sodium azide

Preservative: Sodium azide

Precaution of Use: This product contains Sodium azide: a POISONOUS AND HAZARDOUS SUBSTANCE which should be handled by trained staff only.

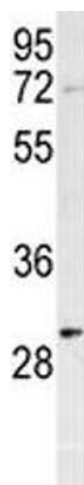
Storage: -20 °C

Storage Comment: Aliquot the PHB antibody and store frozen at -20°C or colder. Avoid repeated freeze-thaw cycles.



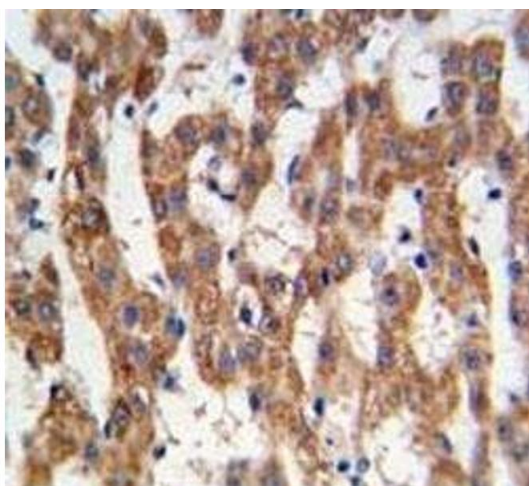
Immunohistochemistry

Image 1. IHC analysis of FFPE human hepatocarcinoma tissue stained with PHB antibody



Western Blotting

Image 2. Western blot testing of PHB antibody and HeLa cell lysate. Predicted molecular weight ~28 kDa.



Immunohistochemistry

Image 3. IHC analysis of FFPE human hepatocarcinoma tissue stained with PHB antibody

Please check the [product details page](#) for more images. Overall 5 images are available for ABIN3032316.