

Datasheet for ABIN3032320

anti-Prolactin Receptor antibody (C-Term)

5 Images

[Go to Product page](#)

Overview

Quantity:	100 µg
Target:	Prolactin Receptor (PRLR)
Binding Specificity:	C-Term
Reactivity:	Human, Rat, Mouse
Host:	Rabbit
Clonality:	Polyclonal
Conjugate:	This Prolactin Receptor antibody is un-conjugated
Application:	Western Blotting (WB), Immunohistochemistry (Paraffin-embedded Sections) (IHC (p))

Product Details

Immunogen:	An amino acid sequence from the C-terminus of mouse Prolactin Receptor (QLGRLDYLDPTCFMH) was used as the immunogen for this Prolactin Receptor antibody (100% rat homology).
Isotype:	IgG
Purification:	Antigen affinity

Target Details

Target:	Prolactin Receptor (PRLR)
Alternative Name:	Prolactin Receptor (PRLR Products)
Background:	PRLR (Prolactin Receptor) is a cytokine receptor. By somatic cell hybrid analysis and by in situ hybridization, Arden et al.(1989, 1990) demonstrated that the gene resides in the same

Target Details

chromosomal region as the growth hormone receptor (GHR) gene, which has been mapped to 5p13-p12. Cunningham et al.(1990) demonstrated that zinc greatly increases the affinity of GH for the extracellular binding domain of PRLR, although it is not required for binding of GH to GHR or for binding of prolactin to the prolactin receptor. By mutational analysis, they showed that a cluster of 3 residues(histidine-18, histidine-21, and glutamic acid-174) in GH and histidine-188 in PRLR (conserved in all PRLRs but not GHRs) are likely zinc-ion ligands.

UniProt: [Q08501](#)

Pathways: [JAK-STAT Signaling](#), [Response to Growth Hormone Stimulus](#)

Application Details

Application Notes: The stated application concentrations are suggested starting amounts. Titration of the Prolactin Receptor antibody may be required due to differences in protocols and secondary/substrate sensitivity.\. Western blot: 0.5-1 µg/mL,IHC (Paraffin): 0.5-1 µg/mL

Restrictions: For Research Use only

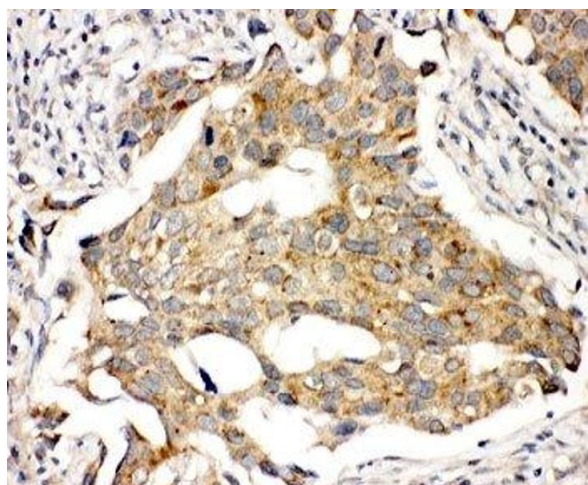
Handling

Buffer: 0.5 mg/mL if reconstituted with 0.2 mL sterile DI water

Storage: -20 °C

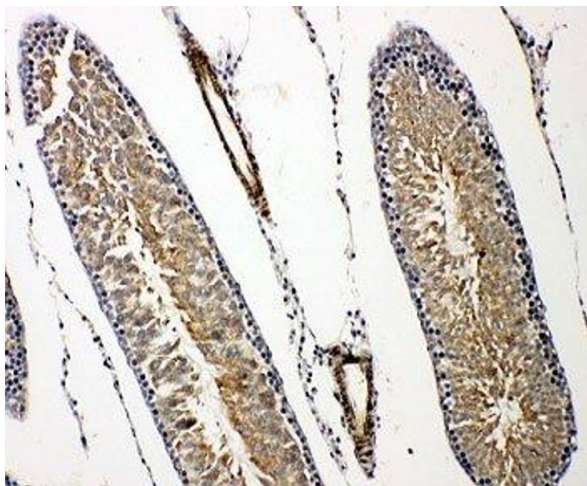
Storage Comment: After reconstitution, the Prolactin Receptor antibody can be stored for up to one month at 4°C. For long-term, aliquot and store at -20°C. Avoid repeated freezing and thawing.

Images



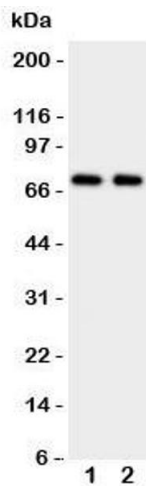
Immunohistochemistry

Image 1. IHC-P: Prolactin Receptor antibody testing of human breast cancer tissue



Immunohistochemistry

Image 2. IHC-P: Prolactin Receptor antibody testing of rat testis tissue



Western Blotting

Image 3. Western blot testing of Prolactin Receptor antibody and Lane 1: HeLa; 2: MCF-7 cell lysate

Please check the [product details page](#) for more images. Overall 5 images are available for ABIN3032320.