

Datasheet for ABIN3032330
anti-PML antibody (Sumoylation Site)

6 Images

[Go to Product page](#)

Overview

Quantity:	0.4 mL
Target:	PML
Binding Specificity:	AA 470-499, Sumoylation Site
Reactivity:	Human
Host:	Rabbit
Clonality:	Polyclonal
Conjugate:	This PML antibody is un-conjugated
Application:	Western Blotting (WB), Immunohistochemistry (IHC), Immunofluorescence (IF), ELISA, Flow Cytometry (FACS)

Product Details

Immunogen:	A portion of amino acids 470-499 (sumoylation site) from the human protein was used as the immunogen for this PML antibody.
Isotype:	Ig Fraction
Purification:	Antigen affinity purified

Target Details

Target:	PML
Alternative Name:	PML (PML Products)
Background:	PML is a member of the tripartite motif (TRIM) family. The TRIM motif includes three zinc-binding domains, a RING, a B-box type 1 and a B-box type 2, and a coiled-coil region. This

Target Details

phosphoprotein localizes to nuclear bodies where it functions as a transcription factor and tumor suppressor. Its expression is cell-cycle related and it regulates the p53 response to oncogenic signals. The gene is often involved in the translocation with the retinoic acid receptor alpha gene associated with acute promyelocytic leukemia (APL).

UniProt: [P29590](#)

Pathways: [p53 Signaling](#), [Retinoic Acid Receptor Signaling Pathway](#), [Maintenance of Protein Location](#), [Positive Regulation of Endopeptidase Activity](#), [Protein targeting to Nucleus](#)

Application Details

Application Notes: Titration of the PML antibody may be required due to differences in protocols and secondary/substrate sensitivity.\. Western blot: 1:1000,IHC (Paraffin): 1:50-1:100,Immunofluorescence: 1:10-1:50,Flow Cytometry: 1:10-1:50

Restrictions: For Research Use only

Handling

Format: Liquid

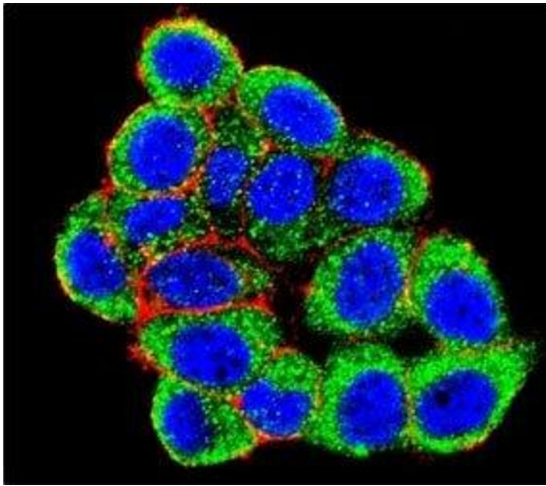
Buffer: In 1X PBS, pH 7.4, with 0.09 % sodium azide

Preservative: Sodium azide

Precaution of Use: This product contains Sodium azide: a POISONOUS AND HAZARDOUS SUBSTANCE which should be handled by trained staff only.

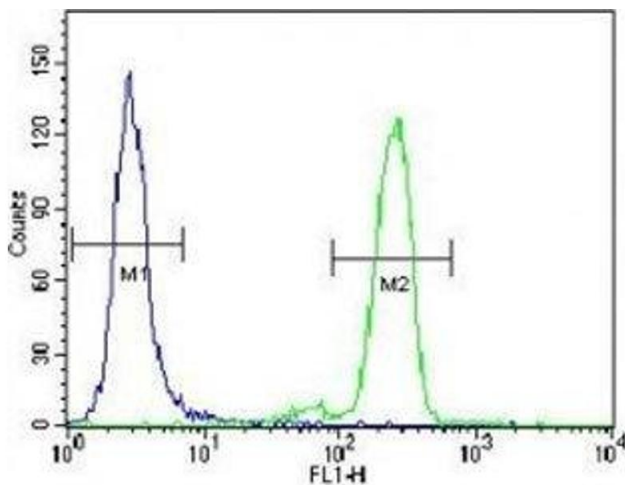
Storage: -20 °C

Storage Comment: Aliquot the PML antibody and store frozen at -20°C or colder. Avoid repeated freeze-thaw cycles.



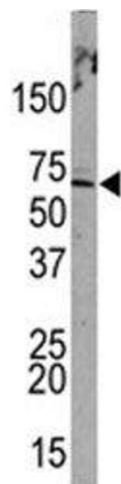
Immunofluorescence

Image 1. Confocal immunofluorescent analysis of PML antibody with HeLa cells followed by Alexa Fluor 488-conjugated goat anti-rabbit IgG (green). Actin filaments have been labeled with Alexa Fluor 555 Phalloidin (red). DAPI was used as a nuclear counterstain (blue).



Flow Cytometry

Image 2. PML antibody flow cytometric analysis of HeLa cells (right histogram) compared to a negative control (left histogram). FITC-conjugated goat-anti-rabbit secondary Ab was used for the analysis.



Western Blotting

Image 3. Western blot analysis of PML antibody and HeLa lysate. There are multiple isoforms from 47-90 kDa.

Please check the [product details page](#) for more images. Overall 6 images are available for ABIN3032330.