

Datasheet for ABIN3032343
anti-PROX1 antibody (AA 185-214)



[Go to Product page](#)

5 Images

Overview

Quantity:	0.4 mL
Target:	PROX1
Binding Specificity:	AA 185-214
Reactivity:	Human
Host:	Rabbit
Clonality:	Polyclonal
Conjugate:	This PROX1 antibody is un-conjugated
Application:	Western Blotting (WB), ELISA, Immunohistochemistry (IHC)

Product Details

Immunogen:	A portion of amino acids 185-214 from the human protein was used as the immunogen for this PROX1 antibody.
Isotype:	Ig Fraction
Cross-Reactivity (Details):	Expected species reactivity: Mouse
Purification:	Antigen affinity purified

Target Details

Target:	PROX1
Alternative Name:	PROX1 (PROX1 Products)
Background:	The expression pattern of Prox1 suggests that it has a role in a variety of embryonic tissues,

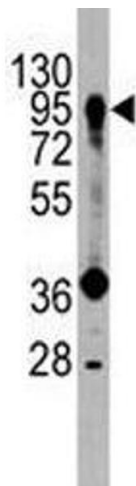
Target Details

including lens. Prox mRNA is present in many different human tissues with lens demonstrating the highest level. Homozygous Prox1-null mice die at midgestation from multiple developmental defects, and a targeted effect on lens development has been reported. Prox1 inactivation caused abnormal cellular proliferation, downregulated expression of the cell cycle inhibitors Cdkn1b and Cdkn1c, misexpression of E-cadherin, and excessive apoptosis. Consequently, mutant lens cells failed to polarize and elongate properly, resulting in a hollow lens. Prox1 is expressed in a subpopulation of endothelial cells that by budding and sprouting give rise to the lymphatic system. Prox1 appears to be a specific and required regulator of the development of the lymphatic system. Prox1 also has been documented to be required for hepatocyte migration in the mouse. Loss of Prox1 results in a smaller liver with a reduced population of clustered hepatocytes. The homeodomain protein Prox1 regulates the egress of progenitor cells from the cell cycle in the embryonic mouse retina. Cells lacking Prox1 are less likely to stop dividing, and ectopic expression of Prox1 forces progenitor cells to exit the cell cycle. Prox1 acts as a key participant in progenitor-cell proliferation and cell-fate determination in the vertebrate retina.

UniProt:	Q92786
Pathways:	Stem Cell Maintenance , Regulation of Muscle Cell Differentiation

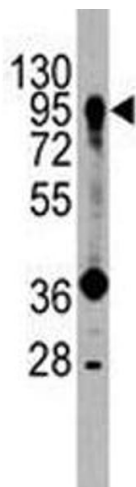
Application Details

Application Notes:	Titration of the PROX1 antibody may be required due to differences in protocols and secondary/substrate sensitivity.\. Western blot: 1:1000,IHC (Paraffin): 1:10-1:50
Restrictions:	For Research Use only
Handling	
Format:	Liquid
Buffer:	In 1X PBS, pH 7.4, with 0.09 % sodium azide
Preservative:	Sodium azide
Precaution of Use:	This product contains Sodium azide: a POISONOUS AND HAZARDOUS SUBSTANCE which should be handled by trained staff only.
Storage:	-20 °C
Storage Comment:	Aliquot the PROX1 antibody and store frozen at -20°C or colder. Avoid repeated freeze-thaw cycles.



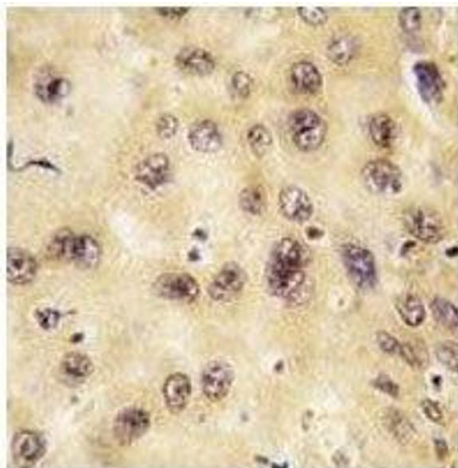
Western Blotting

Image 1. Western blot analysis of PROX1 antibody and HepG2 lysate.



Western Blotting

Image 2. Western blot analysis of PROX1 antibody and HepG2 lysate.



Immunohistochemistry

Image 3. IHC analysis of FFPE human hepatocarcinoma tissue stained with PROX1 antibody

Please check the [product details page](#) for more images. Overall 5 images are available for ABIN3032343.