

Datasheet for ABIN3032352
anti-PSMD14 antibody (AA 362-632)

5 Images

[Go to Product page](#)

Overview

Quantity:	100 µg
Target:	PSMD14
Binding Specificity:	AA 362-632
Reactivity:	Human, Mouse, Rat
Host:	Rabbit
Clonality:	Polyclonal
Conjugate:	This PSMD14 antibody is un-conjugated
Application:	Western Blotting (WB), Immunohistochemistry (Paraffin-embedded Sections) (IHC (p))

Product Details

Immunogen:	Human partial recombinant protein (AA 362-632) was used as the immunogen for this MAD1 antibody.
Isotype:	IgG
Purification:	Antigen affinity

Target Details

Target:	PSMD14
Alternative Name:	MAD1 (PSMD14 Products)
Background:	Mitotic spindle assembly checkpoint protein MAD1 is a protein that in humans is encoded by the MAD1L1 gene. It is mapped to 7p22.3. MAD1 is a component of the mitotic spindle-assembly checkpoint that prevents the onset of anaphase until all chromosome are properly

Target Details

aligned at the metaphase plate. It can function as a homodimer. It localizes to the centrosome during metaphase and to the spindle midzone and the midbody during anaphase and telophase. MAD1 may also play a role in cell cycle control and tumor suppression.

Gene ID:	8379
UniProt:	Q9Y6D9
Pathways:	Mitotic G1-G1/S Phases , DNA Replication , M Phase , Positive Regulation of Endopeptidase Activity , Synthesis of DNA , Ubiquitin Proteasome Pathway

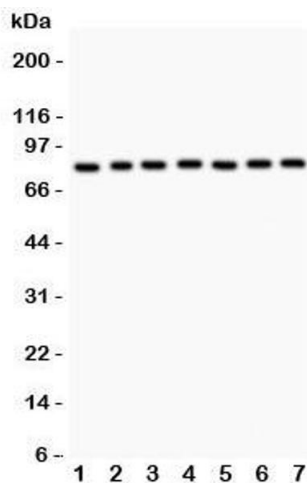
Application Details

Application Notes:	The stated application concentrations are suggested starting amounts. Titration of the MAD1 antibody may be required due to differences in protocols and secondary/substrate sensitivity.\. Western blot: 0.5-1 µg/mL,IHC (Paraffin): 0.5-1 µg/mL
Restrictions:	For Research Use only

Handling

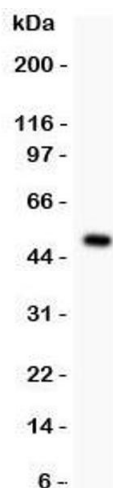
Buffer:	0.5 mg/mL if reconstituted with 0.2 mL sterile DI water
Storage:	-20 °C
Storage Comment:	After reconstitution, the MAD1 antibody can be stored for up to one month at 4°C. For long-term, aliquot and store at -20°C. Avoid repeated freezing and thawing.

Images



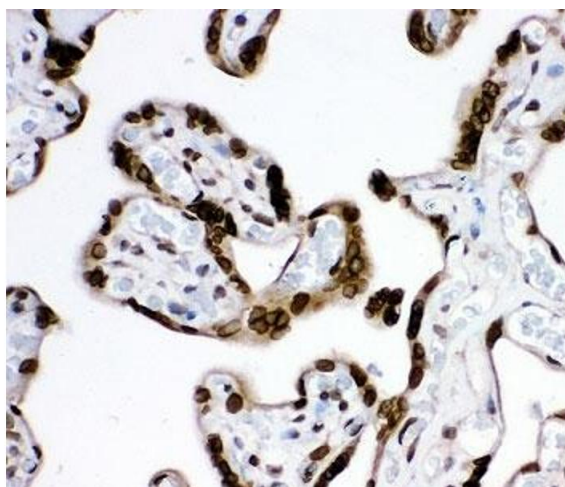
Western Blotting

Image 1. Western blot testing of MAD1 antibody and human samples 1: A549; 2: Jurkat; 3: HeLa; 4: 293T; 5: SHG-44; 6: 22RV1; 7: PANC lysate. Predicted/observed size ~83KD



Western Blotting

Image 2. Western blot testing of MAD1 antibody and recombinant human protein (0.5ng)



Immunohistochemistry

Image 3. IHC-P: MAD1 antibody testing of human placenta tissue

Please check the [product details page](#) for more images. Overall 5 images are available for ABIN3032352.