

Datasheet for ABIN3032353
anti-PSMA1 antibody (AA 234-262)[Go to Product page](#)

2 Images

Overview

Quantity:	0.4 mL
Target:	PSMA1
Binding Specificity:	AA 234-262
Reactivity:	Human
Host:	Rabbit
Clonality:	Polyclonal
Conjugate:	This PSMA1 antibody is un-conjugated
Application:	Western Blotting (WB), ELISA

Product Details

Immunogen:	A portion of amino acids 234-262 from the human protein was used as the immunogen for this PSMA1 antibody.
Isotype:	Ig Fraction
Cross-Reactivity (Details):	Expected species reactivity: Bovine, Primate
Purification:	Antigen affinity purified

Target Details

Target:	PSMA1
Alternative Name:	PSMA1 (PSMA1 Products)
Background:	The proteasome is a multicatalytic proteinase complex with a highly ordered ring-shaped 20S

Target Details

core structure. The core structure is composed of 4 rings of 28 non-identical subunits, 2 rings are composed of 7 alpha subunits and 2 rings are composed of 7 beta subunits. Proteasomes are distributed throughout eukaryotic cells at a high concentration and cleave peptides in an ATP/ubiquitin-dependent process in a non-lysosomal pathway. An essential function of a modified proteasome, the immunoproteasome, is the processing of class I MHC peptides. This gene encodes a member of the peptidase T1A family, that is a 20S core alpha subunit. Alternative splicing results in multiple transcript variants encoding distinct isoforms.

UniProt: [P25786](#)

Pathways: [Mitotic G1-G1/S Phases](#), [DNA Replication](#), [Synthesis of DNA](#)

Application Details

Application Notes: Titration of the PSMA1 antibody may be required due to differences in protocols and secondary/substrate sensitivity.\. Western blot: 1:1000

Restrictions: For Research Use only

Handling

Format: Liquid

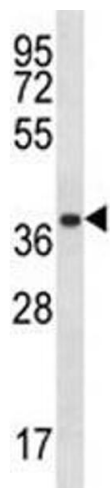
Buffer: In 1X PBS, pH 7.4, with 0.09 % sodium azide

Preservative: Sodium azide

Precaution of Use: This product contains Sodium azide: a POISONOUS AND HAZARDOUS SUBSTANCE which should be handled by trained staff only.

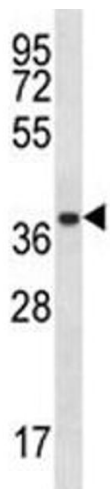
Storage: -20 °C

Storage Comment: Aliquot the PSMA1 antibody and store frozen at -20°C or colder. Avoid repeated freeze-thaw cycles.



Western Blotting

Image 1. PSMA1 antibody western blot analysis in A2058 lysate.



Western Blotting

Image 2. PSMA1 antibody western blot analysis in A2058 lysate.