

Datasheet for ABIN3032355
anti-PRMT1 antibody (AA 317-346)[Go to Product page](#)

3 Images

Overview

Quantity:	0.4 mL
Target:	PRMT1
Binding Specificity:	AA 317-346
Reactivity:	Human, Mouse
Host:	Rabbit
Clonality:	Polyclonal
Conjugate:	This PRMT1 antibody is un-conjugated
Application:	Western Blotting (WB), ELISA, Immunohistochemistry (IHC)

Product Details

Immunogen:	A portion of amino acids 317-346 from the human protein was used as the immunogen for this PRMT1 antibody.
Isotype:	Ig Fraction
Cross-Reactivity (Details):	Expected species reactivity: Rat
Purification:	Purified

Target Details

Target:	PRMT1
Alternative Name:	PRMT1 (PRMT1 Products)
Background:	Arginine methylation is an irreversible post translational modification which has only recently

Target Details

been linked to protein activity. At least three types of PRMT enzymes have been identified in mammalian cells. These enzymes have been shown to have essential regulatory functions by methylation of key proteins in several fundamental areas. These protein include nuclear proteins, IL enhancer binding factor, nuclear factors, cell cycle proteins, signal transduction proteins, apoptosis proteins, and viral proteins. The mammalian PRMT family currently consists of 7 members that share two large domains of homology.

UniProt: [Q99873](#)

Application Details

Application Notes: Titration of the PRMT1 antibody may be required due to differences in protocols and secondary/substrate sensitivity.\. Western blot: 1:1000,IHC (Paraffin): 1:10-1:50

Restrictions: For Research Use only

Handling

Format: Liquid

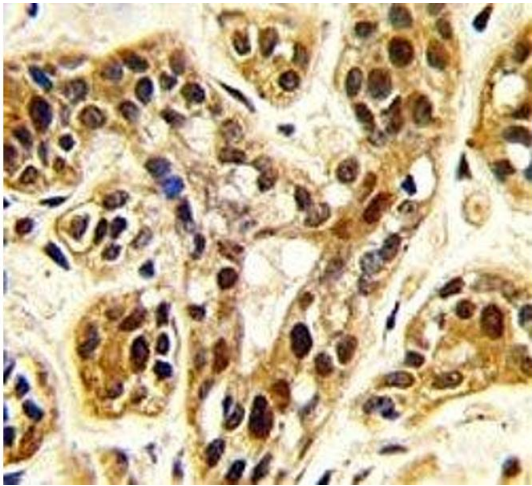
Buffer: In 1X PBS, pH 7.4, with 0.09 % sodium azide

Preservative: Sodium azide

Precaution of Use: This product contains Sodium azide: a POISONOUS AND HAZARDOUS SUBSTANCE which should be handled by trained staff only.

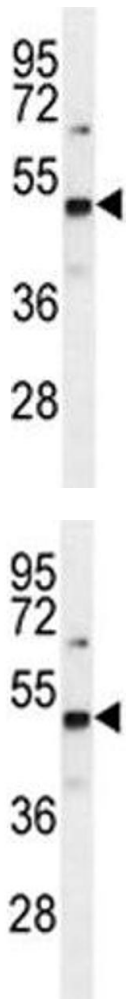
Storage: -20 °C

Storage Comment: Aliquot the PRMT1 antibody and store frozen at -20°C or colder. Avoid repeated freeze-thaw cycles.



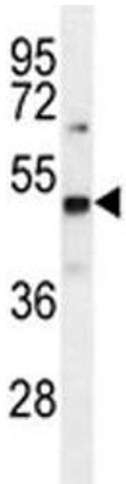
Immunohistochemistry

Image 1. IHC analysis of FFPE human breast carcinoma tissue stained with PRMT1 antibody



Western Blotting

Image 2. PRMT1 antibody western blot analysis in mouse Neuro-2a lysate



Western Blotting

Image 3. PRMT1 antibody western blot analysis in mouse Neuro-2a lysate