

Datasheet for ABIN3032356
anti-PRMT2 antibody (AA 22-53)

5 Images

[Go to Product page](#)

Overview

Quantity:	0.4 mL
Target:	PRMT2
Binding Specificity:	AA 22-53
Reactivity:	Human
Host:	Rabbit
Clonality:	Polyclonal
Conjugate:	This PRMT2 antibody is un-conjugated
Application:	Western Blotting (WB), ELISA, Immunohistochemistry (IHC)

Product Details

Immunogen:	A portion of amino acids 22-53 from the human protein was used as the immunogen for this PRMT2 antibody.
Isotype:	Ig Fraction
Purification:	Purified

Target Details

Target:	PRMT2
Alternative Name:	PRMT2 (PRMT2 Products)
Background:	Arginine methylation is an irreversible post translational modification which has only recently been linked to protein activity. At least three types of PRMT enzymes have been identified in mammalian cells. These enzymes have been shown to have essential regulatory functions by

Target Details

methylation of key proteins in several fundamental areas. These protein include nuclear proteins, IL enhancer binding factor, nuclear factors, cell cycle proteins, signal transduction proteins, apoptosis proteins, and viral proteins. The mammalian PRMT family currently consists of 7 members that share two large domains of homology. Outside of these domains, epitopes were identified and antibodies against all 7 PRMT members have been developed.

UniProt: [P55345](#)

Pathways: [Intracellular Steroid Hormone Receptor Signaling Pathway](#), [Regulation of Intracellular Steroid Hormone Receptor Signaling](#), [Nuclear Hormone Receptor Binding](#)

Application Details

Application Notes: Titration of the PRMT2 antibody may be required due to differences in protocols and secondary/substrate sensitivity.\. IHC (Paraffin): 1:50-1:100,Western blot: 1:1000

Restrictions: For Research Use only

Handling

Format: Liquid

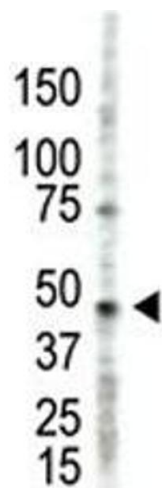
Buffer: In 1X PBS, pH 7.4, with 0.09 % sodium azide

Preservative: Sodium azide

Precaution of Use: This product contains Sodium azide: a POISONOUS AND HAZARDOUS SUBSTANCE which should be handled by trained staff only.

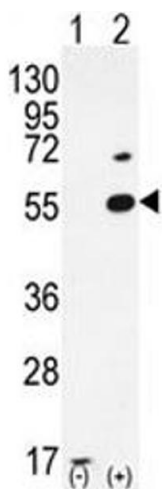
Storage: -20 °C

Storage Comment: Aliquot the PRMT2 antibody and store frozen at -20°C or colder. Avoid repeated freeze-thaw cycles.



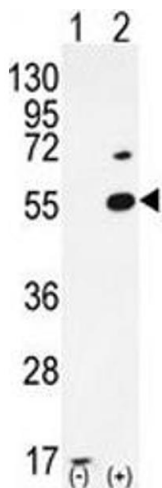
Western Blotting

Image 1. The PRMT2 antibody used in western blot to detect PRMT2 in HL-60 cell lysate



Western Blotting

Image 2. Western blot analysis of PRMT2 antibody and 293 cell lysate either nontransfected (Lane 1) or transiently transfected (2) with the PRMT2 gene.



Western Blotting

Image 3. Western blot analysis of PRMT2 antibody and 293 cell lysate either nontransfected (Lane 1) or transiently transfected (2) with the PRMT2 gene.

Please check the [product details page](#) for more images. Overall 5 images are available for ABIN3032356.