

Datasheet for ABIN3032357  
**anti-PRMT2 antibody (AA 344-375)**[Go to Product page](#)

## 3 Images

## Overview

Quantity:	0.4 mL
Target:	PRMT2
Binding Specificity:	AA 344-375
Reactivity:	Human
Host:	Rabbit
Clonality:	Polyclonal
Conjugate:	This PRMT2 antibody is un-conjugated
Application:	Western Blotting (WB), ELISA

## Product Details

Immunogen:	A portion of amino acids 344-375 from the human protein was used as the immunogen for this PRMT2 antibody.
Isotype:	Ig Fraction
Purification:	Purified

## Target Details

Target:	PRMT2
Alternative Name:	PRMT2 ( <a href="#">PRMT2 Products</a> )
Background:	Arginine methylation is an irreversible post translational modification which has only recently been linked to protein activity. At least three types of PRMT enzymes have been identified in mammalian cells. These enzymes have been shown to have essential regulatory functions by

## Target Details

methylation of key proteins in several fundamental areas. These protein include nuclear proteins, IL enhancer binding factor, nuclear factors, cell cycle proteins, signal transduction proteins, apoptosis proteins, and viral proteins. The mammalian PRMT family currently consists of 7 members that share two large domains of homology. Outside of these domains, epitopes were identified and antibodies against all 7 PRMT members have been developed.

UniProt: [P55345](#)

Pathways: [Intracellular Steroid Hormone Receptor Signaling Pathway](#), [Regulation of Intracellular Steroid Hormone Receptor Signaling](#), [Nuclear Hormone Receptor Binding](#)

## Application Details

Application Notes: Titration of the PRMT2 antibody may be required due to differences in protocols and secondary/substrate sensitivity.\. Western blot: 1:1000

Restrictions: For Research Use only

## Handling

Format: Liquid

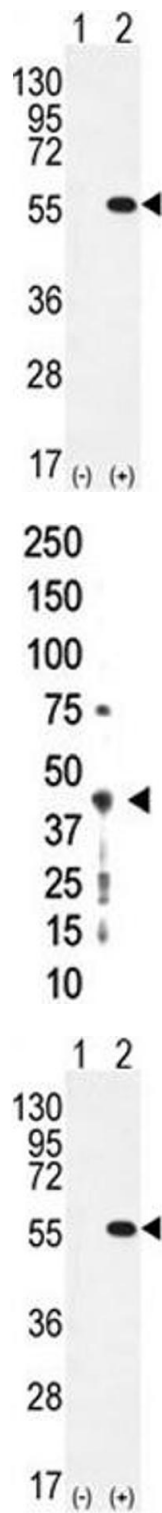
Buffer: In 1X PBS, pH 7.4, with 0.09 % sodium azide

Preservative: Sodium azide

Precaution of Use: This product contains Sodium azide: a POISONOUS AND HAZARDOUS SUBSTANCE which should be handled by trained staff only.

Storage: -20 °C

Storage Comment: Aliquot the PRMT2 antibody and store frozen at -20°C or colder. Avoid repeated freeze-thaw cycles.



**Western Blotting**

**Image 1.** Western blot analysis of PRMT2 antibody and 293 cell lysate either nontransfected (Lane 1) or transiently transfected (2) with the PRMT2 gene.

**Western Blotting**

**Image 2.** Western blot analysis of PRMT2 antibody and whole HL-60 cell lysate

**Western Blotting**

**Image 3.** Western blot analysis of PRMT2 antibody and 293 cell lysate either nontransfected (Lane 1) or transiently transfected (2) with the PRMT2 gene.