



[Go to Product page](#)

Datasheet for ABIN3032365
anti-PRMT7 antibody (AA 660-692)

3 Images

Overview

Quantity:	0.4 mL
Target:	PRMT7
Binding Specificity:	AA 660-692
Reactivity:	Human
Host:	Rabbit
Clonality:	Polyclonal
Conjugate:	This PRMT7 antibody is un-conjugated
Application:	Western Blotting (WB), ELISA, Immunohistochemistry (IHC)

Product Details

Immunogen:	A portion of amino acids 660-692 from the human protein was used as the immunogen for this PRMT7 antibody.
Isotype:	Ig Fraction
Purification:	Purified

Target Details

Target:	PRMT7
Alternative Name:	PRMT7 (PRMT7 Products)
Background:	Arginine methylation is an irreversible post translational modification which has only recently been linked to protein activity. At least three types of PRMT enzymes have been identified in mammalian cells. These enzymes have been shown to have essential regulatory functions by

Target Details

methylation of key proteins in several fundamental areas. These protein include nuclear proteins, IL enhancer binding factor, nuclear factors, cell cycle proteins, signal transduction proteins, apoptosis proteins, and viral proteins. The mammalian PRMT family currently consists of 7 members that share two large domains of homology. Outside of these domains, epitopes were identified and antibodies against all 7 PRMT members have been developed.

UniProt: [Q9NVM4](#)

Pathways: [Ribonucleoprotein Complex Subunit Organization](#)

Application Details

Application Notes: Titration of the PRMT7 antibody may be required due to differences in protocols and secondary/substrate sensitivity.\. Western blot: 1:1000,IHC (Paraffin): 1:50-1:100

Restrictions: For Research Use only

Handling

Format: Liquid

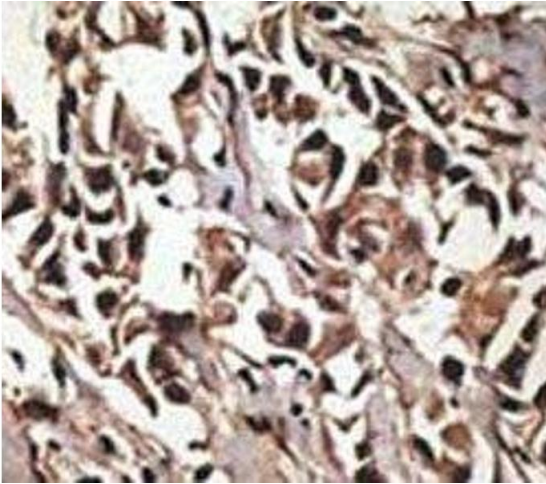
Buffer: In 1X PBS, pH 7.4, with 0.09 % sodium azide

Preservative: Sodium azide

Precaution of Use: This product contains Sodium azide: a POISONOUS AND HAZARDOUS SUBSTANCE which should be handled by trained staff only.

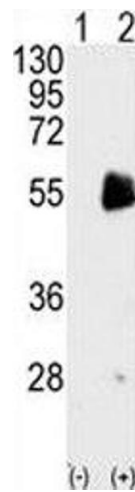
Storage: -20 °C

Storage Comment: Aliquot the PRMT7 antibody and store frozen at -20°C or colder. Avoid repeated freeze-thaw cycles.



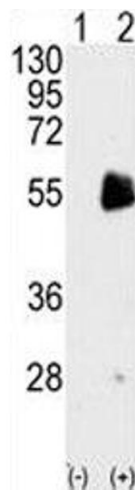
Immunohistochemistry

Image 1. IHC analysis of FFPE human breast carcinoma tissue stained with the PRMT7 antibody



Western Blotting

Image 2. Western blot analysis of PRMT7 antibody and 293 cell lysate either nontransfected (Lane 1) or transiently transfected with the PRMT7 gene (2).



Western Blotting

Image 3. Western blot analysis of PRMT7 antibody and 293 cell lysate either nontransfected (Lane 1) or transiently transfected with the PRMT7 gene (2).