

Datasheet for ABIN3032366
anti-PRMT8 antibody (AA 344-373)[Go to Product page](#)

3 Images

Overview

Quantity:	0.4 mL
Target:	PRMT8
Binding Specificity:	AA 344-373
Reactivity:	Human
Host:	Rabbit
Clonality:	Polyclonal
Conjugate:	This PRMT8 antibody is un-conjugated
Application:	Western Blotting (WB), ELISA

Product Details

Immunogen:	A portion of amino acids 344-373 from the human protein was used as the immunogen for this PRMT8 antibody.
Isotype:	Ig Fraction
Cross-Reactivity (Details):	Expected species reactivity: Mouse
Purification:	Purified

Target Details

Target:	PRMT8
Alternative Name:	PRMT8 (PRMT8 Products)
Background:	Protein arginine methylation plays a role in signal transduction, RNA processing, transcriptional

Target Details

regulation, and DNA repair. PRMT8, a protein arginine N-methyltransferase most closely related to PRMT1, methylates the guanidino nitrogens of arginyl residues in some proteins. This protein associates with the plasma membrane following myristoylation and exhibits a brain-specific expression pattern, making it unique within this family of enzymes.

UniProt: [Q9NR22](#)

Application Details

Application Notes: Titration of the PRMT8 antibody may be required due to differences in protocols and secondary/substrate sensitivity.\. Western blot: 1:1000

Restrictions: For Research Use only

Handling

Format: Liquid

Buffer: In 1X PBS, pH 7.4, with 0.09 % sodium azide

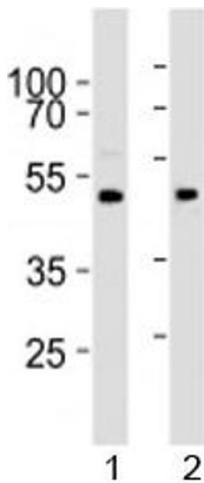
Preservative: Sodium azide

Precaution of Use: This product contains Sodium azide: a POISONOUS AND HAZARDOUS SUBSTANCE which should be handled by trained staff only.

Storage: -20 °C

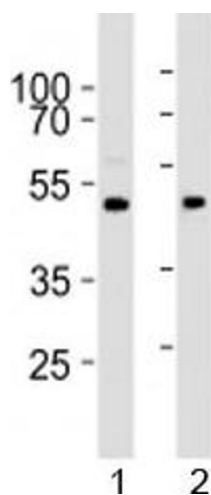
Storage Comment: Aliquot the PRMT8 antibody and store frozen at -20°C or colder. Avoid repeated freeze-thaw cycles.

Images



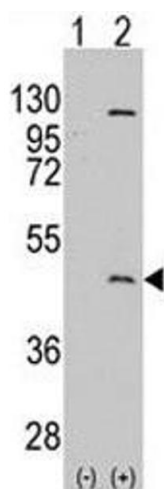
Western Blotting

Image 1. Western blot analysis of lysate from 1) human brain and 2) mouse brain tissue lysate using PRMT8 antibody at 1:1000.



Western Blotting

Image 2. Western blot analysis of lysate from 1) human brain and 2) mouse brain tissue lysate using PRMT8 antibody at 1:1000.



Western Blotting

Image 3. Western blot analysis of PRMT8 antibody and 293 cell lysate either nontransfected (Lane 1) or transiently transfected with the PRMT8 gene (2).