

Datasheet for ABIN3032367  
**anti-PROC antibody (AA 446-461)**



[Go to Product page](#)

3 Images

## Overview

Quantity:	100 µg
Target:	PROC
Binding Specificity:	AA 446-461
Reactivity:	Human
Host:	Rabbit
Clonality:	Polyclonal
Conjugate:	This PROC antibody is un-conjugated
Application:	Western Blotting (WB), Immunohistochemistry (Paraffin-embedded Sections) (IHC (p))

## Product Details

Immunogen:	Amino acids 446-461 (HGHIRDKEAPQKSWAP) were used as the immunogen for this Protein C antibody.
Isotype:	IgG
Purification:	Antigen affinity

## Target Details

Target:	PROC
Alternative Name:	Protein C ( <a href="#">PROC Products</a> )
Target Type:	Viral Protein
Background:	Protein C (PROC), also called PC, is a zymogenic (inactive) protein, the activated form of which

## Target Details

---

plays an important role in regulating blood clotting, inflammation, cell death and maintaining the permeability of blood vessel walls in humans and other animals. The PROC gene is mapped on 2q14.3. The PROC gene contains 8 exons and spans about 11 kb by Foster et al. The conversion of Protein C to a protease with anticoagulant function by thrombin requires as a cofactor thrombomodulin, an endothelial cell membrane protein. Riewald et al. demonstrated that activated Protein C uses the endothelial cell protein C receptor as a coreceptor for cleavage of protease-activated receptor-1 on endothelial cells. Faust et al. demonstrated that the endothelial pathways required for Protein C activation are impaired in severe meningococcal sepsis. They stated that improvement in the outcome of children with meningococcal sepsis who were treated with unactivated Protein C concentrates had been described in case reports and in one uncontrolled series.

---

UniProt: [P04070](#)

## Application Details

---

Application Notes: The stated application concentrations are suggested starting amounts. Titration of the Protein C antibody may be required due to differences in protocols and secondary/substrate sensitivity.\. Western blot: 0.5-1 µg/mL,IHC (Paraffin): 0.5-1 µg/mL

---

Restrictions: For Research Use only

## Handling

---

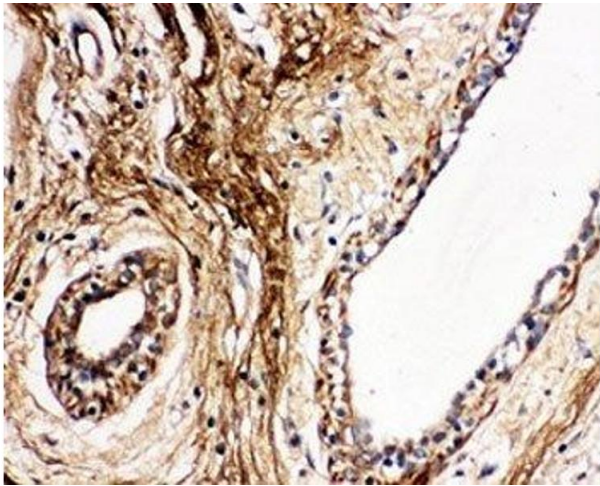
Buffer: 0.5 mg/mL if reconstituted with 0.2 mL sterile DI water

---

Storage: -20 °C

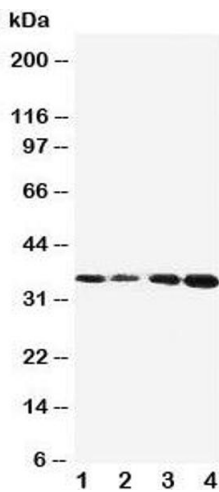
---

Storage Comment: After reconstitution, the Protein C antibody can be stored for up to one month at 4°C. For long-term, aliquot and store at -20°C. Avoid repeated freezing and thawing.



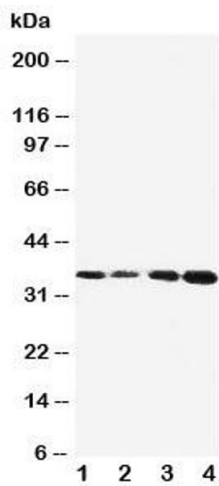
#### Immunohistochemistry

**Image 1.** IHC-P: Protein C antibody testing of human breast cancer tissue



#### Western Blotting

**Image 2.** Western blot testing of Protein C antibody and Lane 1: Jurkat; 2: CEM; 3: SMMC-7721; 4: HeLa cell lysate. Observed size: 35KD, predicted size: 52KD



#### Western Blotting

**Image 3.** Western blot testing of Protein C antibody and Lane 1: Jurkat