

Datasheet for ABIN3032373

**anti-PKC alpha antibody (AA 299-329)****6** Images[Go to Product page](#)

## Overview

Quantity:	0.4 mL
Target:	PKC alpha (PKCa)
Binding Specificity:	AA 299-329
Reactivity:	Human
Host:	Rabbit
Clonality:	Polyclonal
Conjugate:	This PKC alpha antibody is un-conjugated
Application:	Western Blotting (WB), ELISA, Immunohistochemistry (IHC), Flow Cytometry (FACS), Immunofluorescence (IF)

## Product Details

Immunogen:	A portion of amino acids 299-329 from the human protein was used as the immunogen for this PKC alpha antibody.
Isotype:	Ig Fraction
Cross-Reactivity (Details):	Expected species reactivity: Mouse, Rat, Rabbit
Purification:	Purified

## Target Details

Target:	PKC alpha (PKCa)
Alternative Name:	PKC alpha ( <a href="#">PKCa Products</a> )

## Target Details

Background:	Protein kinase C (PKC) is a family of serine- and threonine-specific protein kinases that can be activated by calcium and the second messenger diacylglycerol. PKC family members phosphorylate a wide variety of protein targets and are known to be involved in diverse cellular signaling pathways. PKC family members also serve as major receptors for phorbol esters, a class of tumor promoters. Each member of the PKC family has a specific expression profile and is believed to play a distinct role in cells. PKC alpha is one of the PKC family members. This kinase has been reported to play roles in many different cellular processes, such as cell adhesion, cell transformation, cell cycle checkpoint, and cell volume control. Knockout studies in mice suggest that this kinase may be a fundamental regulator of cardiac contractility and Ca(2+) handling in myocytes.
UniProt:	<a href="#">P17252</a>
Pathways:	<a href="#">WNT Signaling</a> , <a href="#">TCR Signaling</a> , <a href="#">EGFR Signaling Pathway</a> , <a href="#">Neurotrophin Signaling Pathway</a> , <a href="#">Thyroid Hormone Synthesis</a> , <a href="#">cAMP Metabolic Process</a> , <a href="#">Myometrial Relaxation and Contraction</a> , <a href="#">Cell-Cell Junction Organization</a> , <a href="#">Regulation of G-Protein Coupled Receptor Protein Signaling</a> , <a href="#">G-protein mediated Events</a> , <a href="#">Signaling Events mediated by VEGFR1 and VEGFR2</a> , <a href="#">Interaction of EGFR with phospholipase C-gamma</a> , <a href="#">Thromboxane A2 Receptor Signaling</a> , <a href="#">VEGFR1 Specific Signals</a> , <a href="#">VEGF Signaling</a>

## Application Details

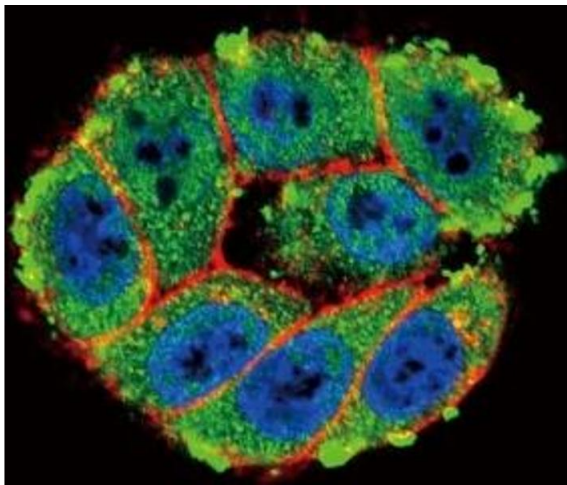
Application Notes:	Titration of the PKC alpha antibody may be required due to differences in protocols and secondary/substrate sensitivity.\. Immunofluorescence: 1:10-1:50,Flow Cytometry: 1:10-1:50,Western blot: 1:1000,IHC (Paraffin): 1:10-1:50
Restrictions:	For Research Use only

## Handling

Format:	Liquid
Buffer:	In 1X PBS, pH 7.4, with 0.09 % sodium azide
Preservative:	Sodium azide
Precaution of Use:	This product contains Sodium azide: a POISONOUS AND HAZARDOUS SUBSTANCE which should be handled by trained staff only.
Storage:	-20 °C
Storage Comment:	Aliquot the PKC alpha antibody and store frozen at -20°C or colder. Avoid repeated freeze-thaw

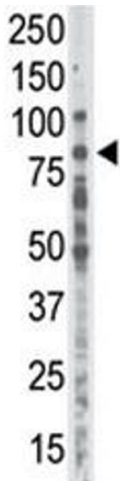
cycles.

Images



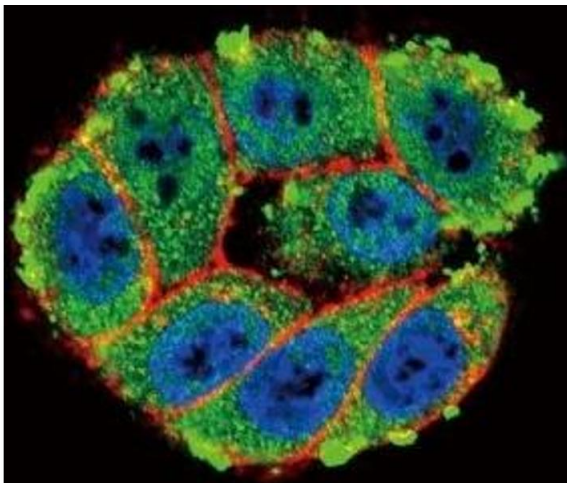
Immunofluorescence

**Image 1.** Confocal immunofluorescent analysis of PKC alpha antibody with HeLa cells followed by Alexa Fluor 488-conjugated goat anti-rabbit IgG (green). Actin filaments have been labeled with Alexa Fluor 555 Phalloidin (red). DAPI was used as a nuclear counterstain (blue).



Western Blotting

**Image 2.** Western blot analysis of anti-PKC alpha antibody in placenta lysate



Immunofluorescence

**Image 3.** Confocal immunofluorescent analysis of PKC alpha antibody with HeLa cells followed by Alexa Fluor 488-conjugated goat anti-rabbit IgG (green). Actin filaments have been labeled with Alexa Fluor 555 Phalloidin (red). DAPI was used as a nuclear counterstain

Please check the [product details page](#) for more images. Overall 6 images are available for ABIN3032373.