

Datasheet for ABIN3032374
anti-PKC beta antibody (AA 303-334)



[Go to Product page](#)

3 Images

Overview

Quantity:	0.4 mL
Target:	PKC beta (PRKCB)
Binding Specificity:	AA 303-334
Reactivity:	Human
Host:	Rabbit
Clonality:	Polyclonal
Conjugate:	This PKC beta antibody is un-conjugated
Application:	Western Blotting (WB), ELISA, Immunohistochemistry (IHC)

Product Details

Immunogen:	A portion of amino acids 303-334 from the human protein was used as the immunogen for this PKC beta antibody.
Isotype:	Ig Fraction
Purification:	Purified

Target Details

Target:	PKC beta (PRKCB)
Alternative Name:	PKC beta (PRKCB Products)
Background:	Protein kinase C (PKC) is a family of serine- and threonine-specific protein kinases that can be activated by calcium and second messenger diacylglycerol. PKC family members phosphorylate a wide variety of protein targets and are known to be involved in diverse cellular

Target Details

signaling pathways. PKC family members also serve as major receptors for phorbol esters, a class of tumor promoters. Each member of the PKC family has a specific expression profile and is believed to play a distinct role in cells. PKC beta is one of the PKC family members. This protein kinase has been reported to be involved in many different cellular functions, such as B cell activation, apoptosis induction, endothelial cell proliferation, and intestinal sugar absorption. Studies in mice also suggest that this kinase may also regulate neuronal functions and correlate fear-induced conflict behavior after stress. Alternatively spliced transcript variants encoding distinct isoforms have been reported. Isoform 1 uses an alternate exon at the 3' end compared to isoform 2, which includes a part of the coding region. The resulting isoform 1 has a distinct and shorter C-terminus, as compared to isoform 2.

UniProt: [P05771](#)

Pathways: [WNT Signaling](#), [TCR Signaling](#), [Thyroid Hormone Synthesis](#), [Nuclear Hormone Receptor Binding](#), [Chromatin Binding](#), [Myometrial Relaxation and Contraction](#), [VEGF Signaling](#), [Unfolded Protein Response](#), [BCR Signaling](#)

Application Details

Application Notes: Titration of the PKC beta antibody may be required due to differences in protocols and secondary/substrate sensitivity.\. Western blot: 1:1000,IHC (Paraffin): 1:50-1:100

Restrictions: For Research Use only

Handling

Format: Liquid

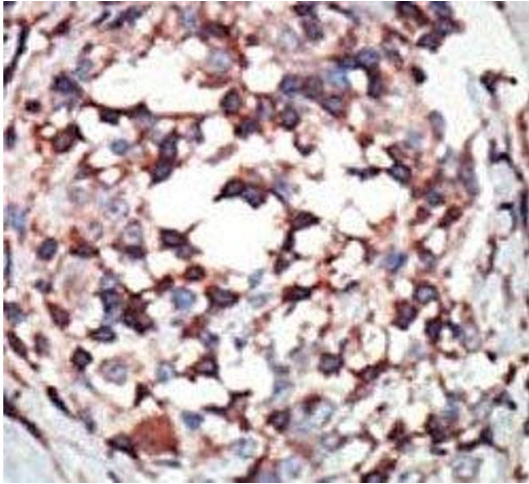
Buffer: In 1X PBS, pH 7.4, with 0.09 % sodium azide

Preservative: Sodium azide

Precaution of Use: This product contains Sodium azide: a POISONOUS AND HAZARDOUS SUBSTANCE which should be handled by trained staff only.

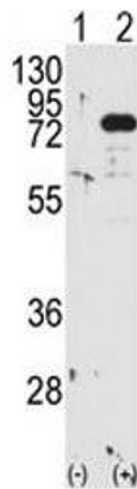
Storage: -20 °C

Storage Comment: Aliquot the PKC beta antibody and store frozen at -20°C or colder. Avoid repeated freeze-thaw cycles.



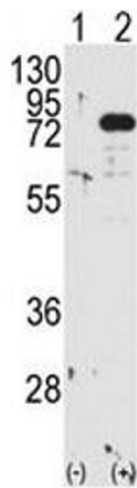
Immunohistochemistry

Image 1. IHC analysis of FFPE human breast carcinoma tissue stained with the PKC beta antibody



Western Blotting

Image 2. Western blot analysis of PKC beta antibody and 293 cell lysate either nontransfected (Lane 1) or transiently transfected with the PRKCB gene (2).



Western Blotting

Image 3. Western blot analysis of PKC beta antibody and 293 cell lysate either nontransfected (Lane 1) or transiently transfected with the PRKCB gene (2).