

Datasheet for ABIN3032381
anti-PRKD3 antibody (AA 860-890)[Go to Product page](#)

4 Images

Overview

Quantity:	0.4 mL
Target:	PRKD3
Binding Specificity:	AA 860-890
Reactivity:	Human
Host:	Rabbit
Clonality:	Polyclonal
Conjugate:	This PRKD3 antibody is un-conjugated
Application:	Western Blotting (WB), Immunohistochemistry (IHC), ELISA

Product Details

Immunogen:	A portion of amino acids 860-890 from the human protein was used as the immunogen for this PKC nu antibody.
Isotype:	Ig Fraction
Cross-Reactivity (Details):	Expected species reactivity: Mouse
Purification:	Purified

Target Details

Target:	PRKD3
Alternative Name:	PKC nu (PRKD3 Products)
Background:	Protein kinase C (PKC) is a family of serine- and threonine-specific protein kinases that can be

Target Details

activated by calcium and second messenger diacylglycerol. PKC family members phosphorylate a wide variety of protein targets and are known to be involved in diverse cellular signaling pathways. PKC also serve as major receptors for phorbol esters, a class of tumor promoters. Each member of the PKC family has a specific expression profile and is believed to play distinct roles in cells. PKC nu is one of the PKC family members. This kinase can be activated rapidly by the agonists of G protein-coupled receptors. It resides in both cytoplasm and nucleus, and its nuclear accumulation is found to be dramatically enhanced in response to its activation. This kinase can also be activated after B-cell antigen receptor (BCR) engagement, which requires intact phospholipase C gamma and the involvement of other PKC family members.

UniProt: [O94806](#)

Application Details

Application Notes: Titration of the PKC nu antibody may be required due to differences in protocols and secondary/substrate sensitivity.\. Western blot: 1:1000,IHC (Paraffin): 1:50-1:100

Restrictions: For Research Use only

Handling

Format: Liquid

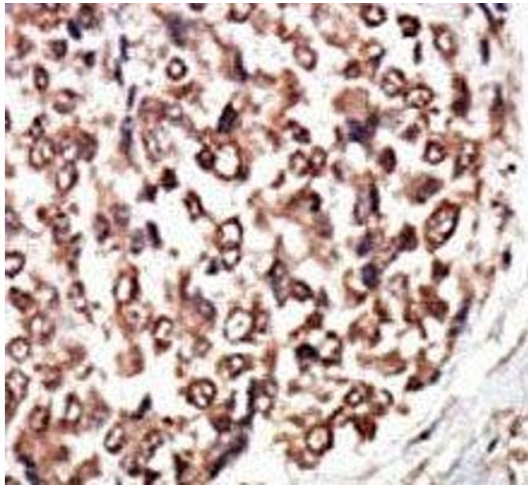
Buffer: In 1X PBS, pH 7.4, with 0.09 % sodium azide

Preservative: Sodium azide

Precaution of Use: This product contains Sodium azide: a POISONOUS AND HAZARDOUS SUBSTANCE which should be handled by trained staff only.

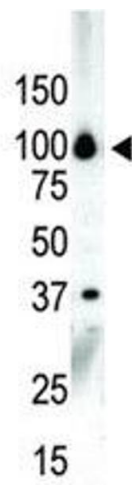
Storage: -20 °C

Storage Comment: Aliquot the PKC nu antibody and store frozen at -20°C or colder. Avoid repeated freeze-thaw cycles.



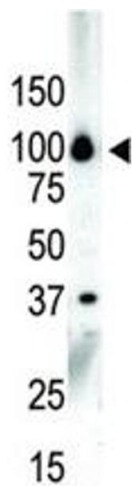
Immunohistochemistry

Image 1. IHC analysis of FFPE human hepatocarcinoma tissue stained with the PKC nu antibody



Western Blotting

Image 2. Western blot analysis of PKC nu antibody and NCI-H460 cell lysate



Western Blotting

Image 3. Western blot analysis of PKC nu antibody and NCI-H460 cell lysate

Please check the [product details page](#) for more images. Overall 4 images are available for ABIN3032381.