

Datasheet for ABIN3032390  
**anti-PPP3CC antibody (AA 18-47)**[Go to Product page](#)

## 3 Images

## Overview

Quantity:	0.4 mL
Target:	PPP3CC
Binding Specificity:	AA 18-47
Reactivity:	Human
Host:	Rabbit
Clonality:	Polyclonal
Conjugate:	This PPP3CC antibody is un-conjugated
Application:	Western Blotting (WB), ELISA, Immunohistochemistry (IHC)

## Product Details

Immunogen:	A portion of amino acids 18-47 from the human protein was used as the immunogen for this PPP3CC antibody.
Isotype:	Ig Fraction
Purification:	Purified

## Target Details

Target:	PPP3CC
Alternative Name:	PPP3CC ( <a href="#">PPP3CC Products</a> )
Background:	Calmodulin-dependent protein phosphatase, calcineurin, is involved in a wide range of biologic activities, acting as a Ca(2+)-dependent modifier of phosphorylation status. In testis, the motility of the sperm is thought to be controlled by cAMP-dependent phosphorylation and a

## Target Details

unique form of calcineurin appears to be associated with the flagellum. The calcineurin holoenzyme is composed of catalytic and regulatory subunits of 60 and 18 kD, respectively. At least 3 genes, calcineurin A-alpha, calcineurin A-beta, and calcineurin A-gamma (CALNA3), have been cloned for the catalytic subunit. These genes have been identified in humans, mice, and rats, and are highly conserved between species (90 to 95 % amino acid identity).

UniProt: [P48454](#)

Pathways: [RTK Signaling](#), [WNT Signaling](#), [VEGF Signaling](#), [BCR Signaling](#)

## Application Details

Application Notes: Titration of the PPP3CC antibody may be required due to differences in protocols and secondary/substrate sensitivity.\. Western blot: 1:1000,IHC (Paraffin): 1:50-1:100

Restrictions: For Research Use only

## Handling

Format: Liquid

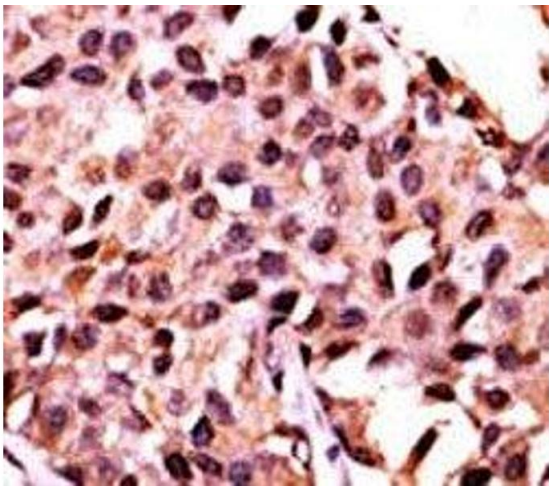
Buffer: In 1X PBS pH 7.4 with 0.09 % sodium azide

Preservative: Sodium azide

Precaution of Use: This product contains Sodium azide: a POISONOUS AND HAZARDOUS SUBSTANCE which should be handled by trained staff only.

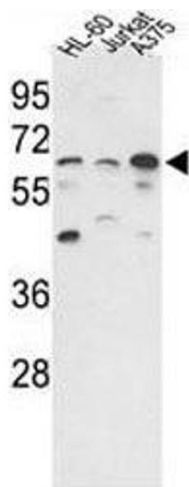
Storage: -20 °C

Storage Comment: Aliquot the PPP3CC antibody and store frozen at -20°C or colder. Avoid repeated freeze-thaw cycles.



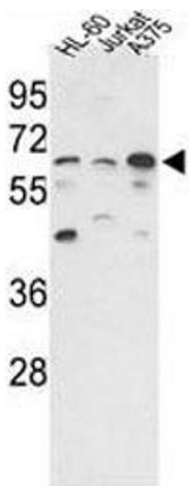
Immunohistochemistry

**Image 1.** IHC analysis of FFPE human breast carcinoma stained with the PPP3CC antibody



Western Blotting

**Image 2.** Western blot analysis of PPP3CC antibody and HL-60, Jurkat, A375 lysate.



Western Blotting

**Image 3.** Western blot analysis of PPP3CC antibody and HL-60, Jurkat, A375 lysate.