

Datasheet for ABIN3032405
anti-PINK1 antibody (AA 118-147)



[Go to Product page](#)

4 Images

Overview

Quantity:	0.4 mL
Target:	PINK1
Binding Specificity:	AA 118-147
Reactivity:	Human, Mouse
Host:	Rabbit
Clonality:	Polyclonal
Conjugate:	This PINK1 antibody is un-conjugated
Application:	Western Blotting (WB), Immunohistochemistry (IHC), ELISA

Product Details

Immunogen:	A portion of amino acids 118-147 from the human protein was used as the immunogen for this PINK1 antibody.
Isotype:	Ig Fraction
Purification:	Purified

Target Details

Target:	PINK1
Alternative Name:	PINK1 (PINK1 Products)
Background:	Defects in PINK1 are the cause of autosomal recessive early-onset Parkinson's disease 6 (PARK6). Six novel pathogenic PINK1 mutations suggest that PINK1 may be the second most common causative gene next to parkin in parkinsonism with the recessive mode of inheritance.

Target Details

Strong evidence indicates that, although important in mendelian forms of Parkinson's disease (PD), PINK1 does not influence the cause of sporadic nonmendelian forms of PD.

UniProt: [Q9BXM7](#)

Pathways: [Autophagy](#)

Application Details

Application Notes: The stated application concentrations are suggested starting amounts. Titration of the PINK1 antibody may be required due to differences in protocols and secondary/substrate sensitivity.\.
Western blot: 1:1000,IHC (Paraffin): 1:50-1:100

Restrictions: For Research Use only

Handling

Format: Liquid

Buffer: In 1X PBS, pH 7.4, with 0.09 % sodium azide

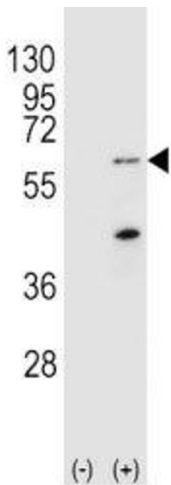
Preservative: Sodium azide

Precaution of Use: This product contains Sodium azide: a POISONOUS AND HAZARDOUS SUBSTANCE which should be handled by trained staff only.

Storage: -20 °C

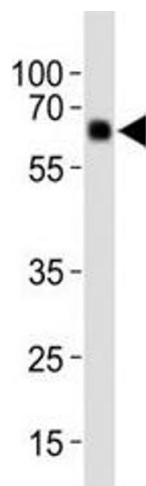
Storage Comment: Store at 4°C for up to one month. For long term, aliquot the PINK1 antibody and store frozen at -20°C or colder. Avoid repeated freeze-thaw cycles.

Images



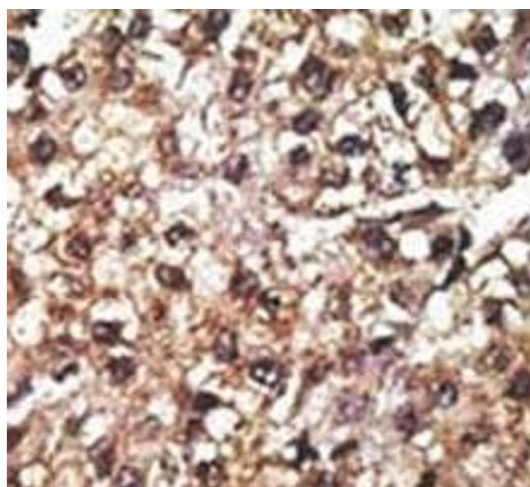
Western Blotting

Image 1. Western blot analysis of PINK1 antibody and 293 cell lysate (2 ug/lane) either nontransfected (Lane 1) or transiently transfected (2) with the Park6/PINK1 gene.



Western Blotting

Image 2. Western blot analysis of lysate from human placenta tissue, using Park6/ PINK1 antibody diluted at 1:1000. Predicted molecular weight: 60-70 kDa



Immunohistochemistry

Image 3. IHC analysis of FFPE human hepatocarcinoma tissue stained with the PINK1 antibody

Please check the [product details page](#) for more images. Overall 4 images are available for ABIN3032405.