

Datasheet for ABIN3032410
anti-P2RX5 antibody (AA 44-237)[Go to Product page](#)

2 Images

Overview

Quantity:	100 µg
Target:	P2RX5
Binding Specificity:	AA 44-237
Reactivity:	Human
Host:	Rabbit
Clonality:	Polyclonal
Conjugate:	This P2RX5 antibody is un-conjugated
Application:	Western Blotting (WB)

Product Details

Immunogen:	Human partial recombinant protein (AA 44-237) was used as the immunogen for this NR5A2 / LRH-1 antibody.
Isotype:	IgG
Purification:	Antigen affinity

Target Details

Target:	P2RX5
Alternative Name:	LRH-1 (P2RX5 Products)
Background:	NR5A2 (nuclear receptor subfamily 5, group A, member 2) also known as liver receptor homolog-1 (LRH-1) is a protein that in humans is encoded by the NR5A2 gene. This protein is a member of the nuclear receptor family of intracellulartranscription factors. It plays a critical role

Target Details

in the regulation of development, cholesterol transport, bile acid homeostasis andsteroidogenesis. LRH-1 is important for maintaining pluripotence of stem cells during embryonic development. Liver receptor homolog-1 has been shown to interact with the small heterodimer partner.

Gene ID: 2494

Application Details

Application Notes: The stated application concentrations are suggested starting amounts. Titration of the LRH-1 antibody may be required due to differences in protocols and secondary/substrate sensitivity.\. Western blot: 0.5-1 µg/mL

Restrictions: For Research Use only

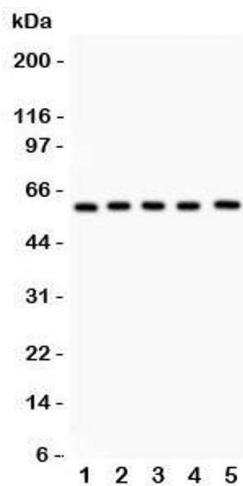
Handling

Buffer: 0.5 mg/mL if reconstituted with 0.2 mL sterile DI water

Storage: -20 °C

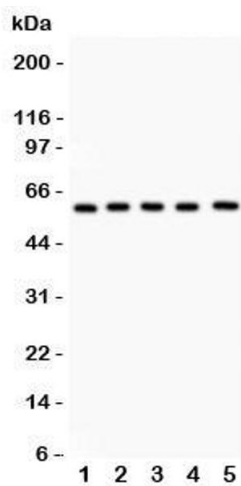
Storage Comment: After reconstitution, the LRH-1 antibody can be stored for up to one month at 4°C. For long-term, aliquot and store at -20°C. Avoid repeated freezing and thawing.

Images



Western Blotting

Image 1. Western blot testing of LRH-1 antibody and Lane 1: PANC; 2: HEPG2; 3: A549; 4: SMMC-7721; 5: HeLa lysate. Predicted/observed size ~60KD



Western Blotting

Image 2. Western blot testing of LRH-1 antibody and Lane 1: PANC