

Datasheet for ABIN3032418
anti-PKM2 antibody (AA 121-151)



[Go to Product page](#)

3 Images

Overview

Quantity:	0.4 mL
Target:	PKM2
Binding Specificity:	AA 121-151
Reactivity:	Human, Mouse
Host:	Rabbit
Clonality:	Polyclonal
Conjugate:	This PKM2 antibody is un-conjugated
Application:	Western Blotting (WB), ELISA

Product Details

Immunogen:	A portion of amino acids 121-151 from the human protein was used as the immunogen for this Pyruvate Kinase antibody.
Isotype:	Ig Fraction
Cross-Reactivity (Details):	Expected species reactivity: Rabbit, Rat
Purification:	Purified

Target Details

Target:	PKM2
Alternative Name:	Pyruvate Kinase (PKM2) (PKM2 Products)
Background:	PKM2 is a pyruvate kinase that catalyzes the production of phosphoenolpyruvate from pyruvate

Target Details

and ATP. This protein has been shown to interact with thyroid hormone, and thus may mediate cellular metabolic effects induced by thyroid hormones. This protein has been found to bind Opa protein, a bacterial outer membrane protein involved in gonococcal adherence to and invasion of human cells, suggesting a role of this protein in bacterial pathogenesis.

UniProt: [P14618](#)

Pathways: [Warburg Effect](#)

Application Details

Application Notes: Titration of the Pyruvate Kinase antibody may be required due to differences in protocols and secondary/substrate sensitivity.\. Western blot: 1:2000

Restrictions: For Research Use only

Handling

Format: Liquid

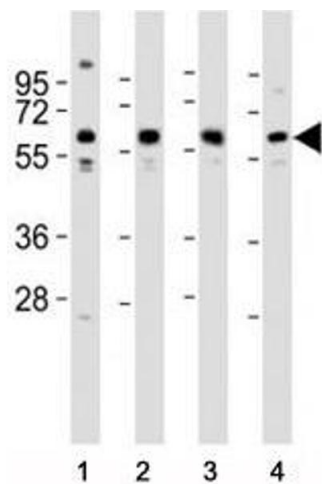
Buffer: In 1X PBS pH 7.4 with 0.09 % sodium azide

Preservative: Sodium azide

Precaution of Use: This product contains Sodium azide: a POISONOUS AND HAZARDOUS SUBSTANCE which should be handled by trained staff only.

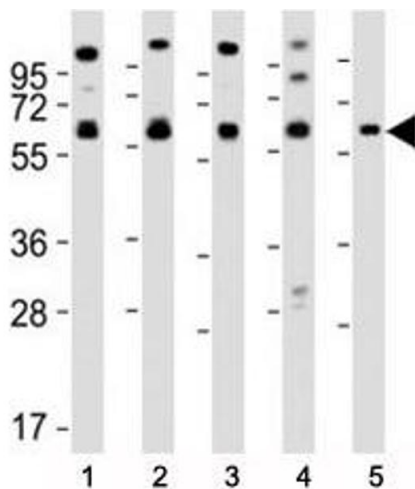
Storage: -20 °C

Storage Comment: Aliquot the Pyruvate Kinase antibody and store frozen at -20°C or colder. Avoid repeated freeze-thaw cycles.



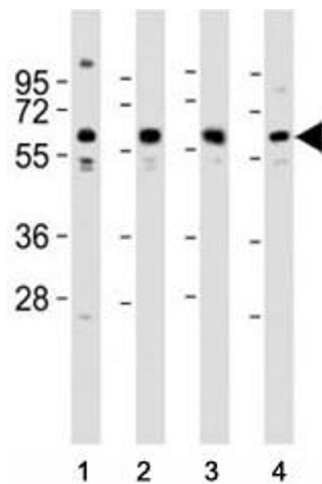
Western Blotting

Image 1. Western blot testing of Pyruvate Kinase antibody at 1:2000 dilution. Lane 1: MCF-7 lysate; 2: HeLa; 3: NIH3T3; 4: PC-12; Predicted molecular weight ~ 60 kDa.



Western Blotting

Image 2. Western blot testing of Pyruvate Kinase antibody at 1:2000 dilution. Lane 1: MCF-7 lysate; 2: HeLa; 3: THP-1; 4: NIH3T3; 5: PC-12; Predicted molecular weight ~ 60 kDa.



Western Blotting

Image 3. Western blot testing of Pyruvate Kinase antibody at 1:2000 dilution. Lane 1: MCF-7 lysate