



Datasheet for ABIN3032425  
**anti-RAB7A antibody (AA 176-204)**



[Go to Product page](#)

5 Images

Overview

Quantity:	0.4 mL
Target:	RAB7A
Binding Specificity:	AA 176-204
Reactivity:	Human
Host:	Rabbit
Clonality:	Polyclonal
Conjugate:	This RAB7A antibody is un-conjugated
Application:	Western Blotting (WB), ELISA, Immunohistochemistry (IHC), Flow Cytometry (FACS)

Product Details

Immunogen:	A portion of amino acids 176-204 from human RAB7A was used as the immunogen for this RAB7 antibody.
Isotype:	Ig Fraction
Cross-Reactivity (Details):	Expected species reactivity: Mouse
Purification:	Antigen affinity purified

Target Details

Target:	RAB7A
Alternative Name:	RAB7A ( <a href="#">RAB7A Products</a> )
Background:	RAB family members are small, RAS-related GTP-binding proteins that are important regulators

## Target Details

---

of vesicular transport. Each RAB protein targets multiple proteins that act in exocytic / endocytic pathways. RAB7 is a RAB family member that regulates vesicle traffic in the late endosomes and also from late endosomes to lysosomes. This protein is also involved in the cellular vacuolation of the VacA cytotoxin of Helicobacter pylori.

UniProt: [P51149](#)

Pathways: [EGFR Signaling Pathway](#), [Maintenance of Protein Location](#), [SARS-CoV-2 Protein Interactome](#)

## Application Details

---

Application Notes: Titration of the RAB7 antibody may be required due to differences in protocols and secondary/substrate sensitivity.\. Western blot: 1:1000,IHC (Paraffin): 1:50-1:100,Flow Cytometry: 1:10-1:50

Restrictions: For Research Use only

## Handling

---

Format: Liquid

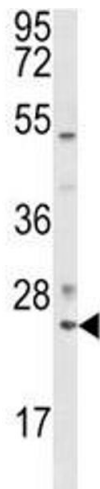
Buffer: In 1X PBS, pH 7.4, with 0.09 % sodium azide

Preservative: Sodium azide

Precaution of Use: This product contains Sodium azide: a POISONOUS AND HAZARDOUS SUBSTANCE which should be handled by trained staff only.

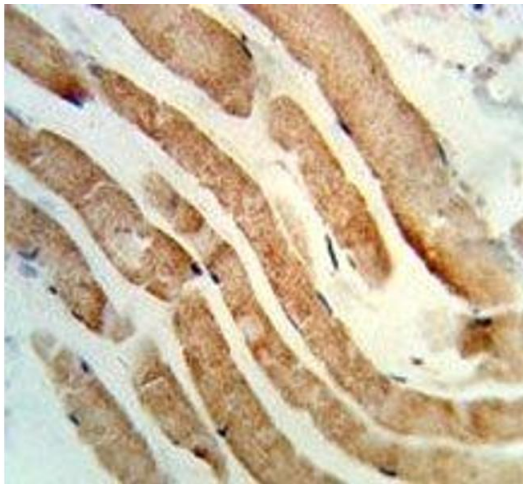
Storage: -20 °C

Storage Comment: Aliquot the RAB7 antibody and store frozen at -20°C or colder. Avoid repeated freeze-thaw cycles.



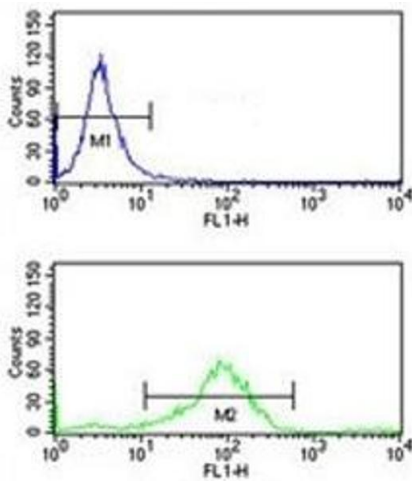
### Western Blotting

**Image 1.** Western blot analysis of RAB7 antibody and K562 lysate.



### Immunohistochemistry

**Image 2.** IHC analysis of FFPE human skeletal muscle stained with RAB7 antibody



### Flow Cytometry

**Image 3.** RAB7 antibody flow cytometry analysis of K562 cells (bottom histogram) compared to a negative control (top histogram). FITC-conjugated goat-anti-rabbit secondary Ab was used for the analysis.

Please check the [product details page](#) for more images. Overall 5 images are available for ABIN3032425.