



Datasheet for ABIN3032433
anti-RAPTOR antibody (pSer863)



[Go to Product page](#)

2 Images

Overview

Quantity:	0.4 mL
Target:	RAPTOR
Binding Specificity:	pSer863
Reactivity:	Human
Host:	Rabbit
Clonality:	Polyclonal
Conjugate:	This RAPTOR antibody is un-conjugated
Application:	ELISA, Dot Blot (DB)

Product Details

Immunogen:	This phospho-Raptor antibody was produced from rabbits immunized with a KLH conjugated synthetic phosphopeptide corresponding to amino acid residues surrounding pS863 of human Raptor.
Isotype:	Ig Fraction
Purification:	Antigen affinity purified

Target Details

Target:	RAPTOR
Alternative Name:	Raptor (RAPTOR Products)
Background:	Raptor participates in the FRAP1 pathway and associates in a near stoichiometric ratio with FRAP1 to form a nutrient-sensitive complex (NSC). It plays a pivotal role as a scaffold protein in

Target Details

the FRAP1-signaling pathway and this interaction is essential for the catalyzed phosphorylation of EIF4EBP1. It has a positive role in nutrient-stimulated signaling to the downstream effector RPS6KB1. Under nutrient-deprived conditions, raptor serves as a negative regulator of FRAP1 kinase activity. Regulation of the interaction with FRAP1 is a critical mechanism by which cells coordinate the rate of cell growth and maintenance of cell size with different environmental conditions.

UniProt: [Q8N122](#)

Pathways: [Warburg Effect](#)

Application Details

Application Notes: Titration of the phospho-Raptor antibody may be required due to differences in protocols and secondary/substrate sensitivity.\. Dot blot: 1:500

Restrictions: For Research Use only

Handling

Format: Liquid

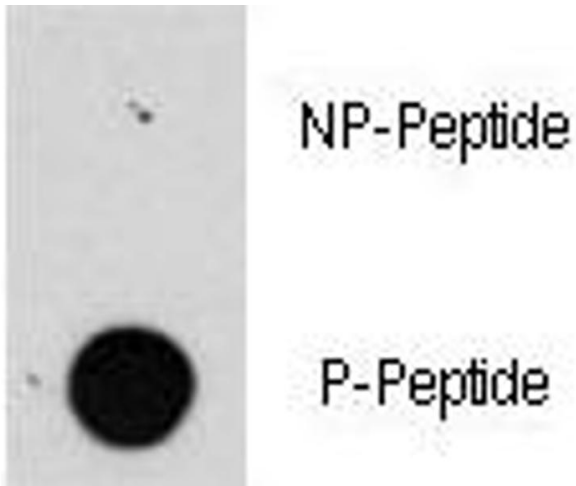
Buffer: In 1X PBS, pH 7.4, with 0.09 % sodium azide

Preservative: Sodium azide

Precaution of Use: This product contains Sodium azide: a POISONOUS AND HAZARDOUS SUBSTANCE which should be handled by trained staff only.

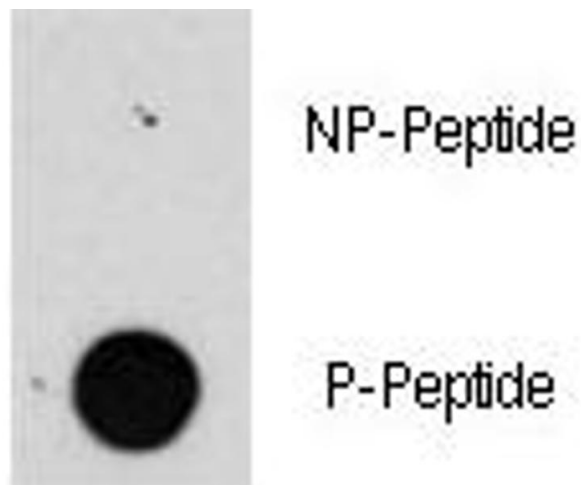
Storage: -20 °C

Storage Comment: Aliquot the phospho-Raptor antibody and store frozen at -20°C or colder. Avoid repeated freeze-thaw cycles.



Dot Blot

Image 1. Dot blot analysis of phospho-Raptor antibody. 50ng of phos-peptide or nonphos-peptide per dot were spotted.



Dot Blot

Image 2. Dot blot analysis of phospho-Raptor antibody. 50ng of phos-peptide or nonphos-peptide per dot were spotted.