

Datasheet for ABIN3032435  
**anti-RHEB antibody (AA 104-134)**[Go to Product page](#)

## 3 Images

## Overview

|                      |  |
|----------------------|--|
| Quantity:            | 0.4 mL   |
| Target:              | RHEB   |
| Binding Specificity: | AA 104-134   |
| Reactivity:          | Human  |
| Host:                | Rabbit   |
| Clonality:           | Polyclonal   |
| Conjugate:           | This RHEB antibody is un-conjugated                      |
| Application:         | Western Blotting (WB), ELISA, Immunohistochemistry (IHC) |

## Product Details

|                             |   |
|-----------------------------|---|
| Immunogen:                  | A portion of amino acids 104-134 from the human protein was used as the immunogen for this RHEB antibody. |
| Isotype:                    | Ig Fraction   |
| Cross-Reactivity (Details): | Expected species reactivity: Mouse, Rat, Bovine   |
| Purification:               | Purified  |

## Target Details

|                   |  |
|-------------------|--|
| Target:           | RHEB   |
| Alternative Name: | RHEB ( <a href="#">RHEB Products</a> )   |
| Background:       | This gene is a member of the small GTPase superfamily and encodes a lipid-anchored, cell |

## Target Details

membrane protein with five repeats of the RAS-related GTP-binding region. This protein is vital in regulation of growth and cell cycle progression due to its role in the insulin/TOR/S6K signaling pathway. The protein has GTPase activity and shuttles between a GDP-bound form and a GTP-bound form, and farnesylation of the protein is required for this activity. Three pseudogenes have been mapped, two on chromosome 10 and one on chromosome 22.

UniProt: [Q15382](#)

Pathways: [RTK Signaling](#)

## Application Details

Application Notes: Titration of the RHEB antibody may be required due to differences in protocols and secondary/substrate sensitivity.\. Western blot: 1:1000,IHC (Paraffin): 1:50-1:100

Restrictions: For Research Use only

## Handling

Format: Liquid

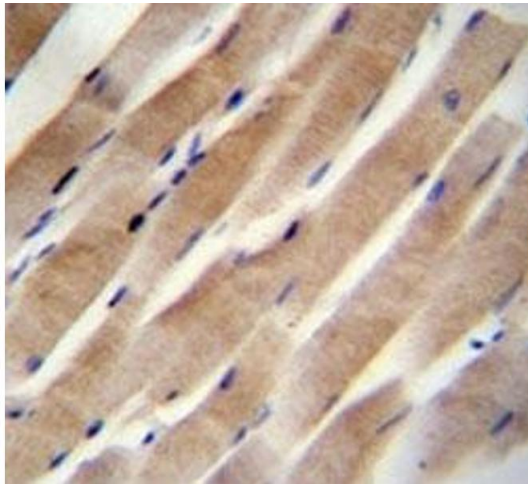
Buffer: In 1X PBS, pH 7.4, with 0.09 % sodium azide

Preservative: Sodium azide

Precaution of Use: This product contains Sodium azide: a POISONOUS AND HAZARDOUS SUBSTANCE which should be handled by trained staff only.

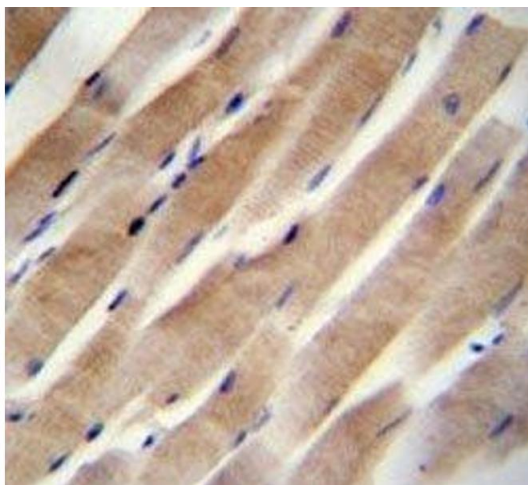
Storage: -20 °C

Storage Comment: Aliquot the RHEB antibody and store frozen at -20°C or colder. Avoid repeated freeze-thaw cycles.



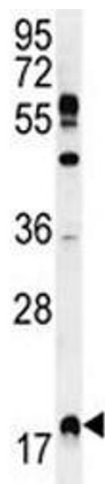
#### Immunohistochemistry

**Image 1.** RHEB antibody immunohistochemistry analysis in formalin fixed and paraffin embedded human skeletal muscle.



#### Immunohistochemistry

**Image 2.** RHEB antibody immunohistochemistry analysis in formalin fixed and paraffin embedded human skeletal muscle.



#### Western Blotting

**Image 3.** RHEB antibody western blot analysis in MDA-MB231 lysate.