

Datasheet for ABIN3032439

anti-ROR1 antibody

8 Images

[Go to Product page](#)

Overview

Quantity:	0.2 mL
Target:	ROR1
Reactivity:	Human, Mouse
Host:	Rabbit
Clonality:	Polyclonal
Conjugate:	This ROR1 antibody is un-conjugated
Application:	Western Blotting (WB), ELISA, Immunohistochemistry (IHC), Flow Cytometry (FACS)

Product Details

Immunogen:	This ROR1 antibody was produced from rabbits immunized with recombinant human ROR1 protein (aa region: 112 - 399).
Isotype:	Ig Fraction
Purification:	Antigen affinity purified

Target Details

Target:	ROR1
Alternative Name:	ROR1 (ROR1 Products)
Background:	ROR1 is a receptor protein tyrosine kinase whose cellular role has not been determined. It is a type I membrane protein and belongs to the ROR subfamily of cell surface receptors. Studies of a similar protein in mouse suggest that this protein may interact with another receptor protein tyrosine kinase and may be involved in skeletal and cardiac development.

Target Details

UniProt:	Q01973
Pathways:	RTK Signaling , WNT Signaling , Nuclear Receptor Transcription Pathway , Steroid Hormone Mediated Signaling Pathway , Regulation of Lipid Metabolism by PPARalpha

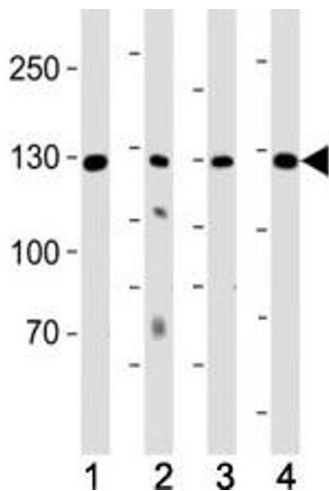
Application Details

Application Notes:	The stated application concentrations are suggested starting amounts. Titration of the ROR1 antibody may be required due to differences in protocols and secondary/substrate sensitivity.\. Western blot: 1:1000-2000,Flow Cytometry: 1:25,IHC (Paraffin): 1:10-1:50
Restrictions:	For Research Use only

Handling

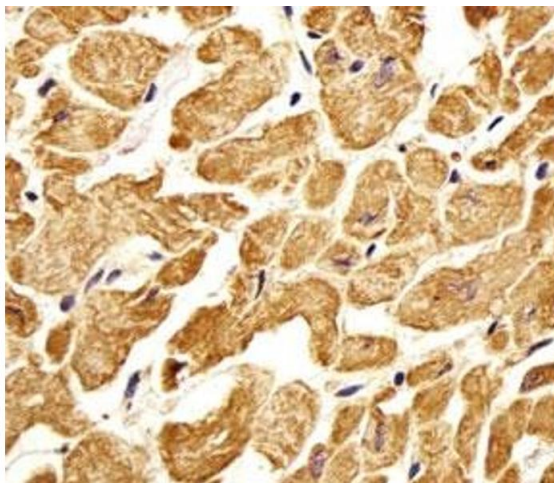
Format:	Liquid
Buffer:	In 1X PBS, pH 7.4, with 0.09 % sodium azide
Preservative:	Sodium azide
Precaution of Use:	This product contains Sodium azide: a POISONOUS AND HAZARDOUS SUBSTANCE which should be handled by trained staff only.
Storage:	-20 °C
Storage Comment:	Store at 4°C for up to one month. For long term, aliquot the ROR1 antibody and store frozen at -20°C or colder. Avoid repeated freeze-thaw cycles.

Images



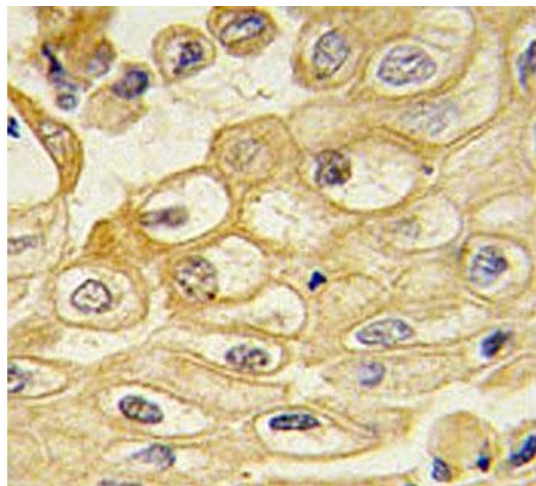
Western Blotting

Image 1. Western blot analysis of lysate from (1) K562 cell line, (2) human lung, (3) mouse kidney and (4) mouse heart tissue using ROR1 antibody at 1:1000. Predicted molecular weight of ROR1 isoforms: 105 kDa and 130 kDa.



Immunohistochemistry

Image 2. Immunohistochemical analysis of paraffin-embedded human heart section using ROR1 antibody. Ab was diluted at 1:25 dilution.



Immunohistochemistry

Image 3. IHC testing of FFPE human lung carcinoma with ROR1 antibody.

Please check the [product details page](#) for more images. Overall 8 images are available for ABIN3032439.