

Datasheet for ABIN3032442
anti-ROR2 antibody (AA 19-50)

5 Images

[Go to Product page](#)

Overview

Quantity:	0.4 mL
Target:	ROR2
Binding Specificity:	AA 19-50
Reactivity:	Human
Host:	Rabbit
Clonality:	Polyclonal
Conjugate:	This ROR2 antibody is un-conjugated
Application:	Western Blotting (WB), Immunohistochemistry (IHC), ELISA, Flow Cytometry (FACS)

Product Details

Immunogen:	A portion of amino acids 19-50 from the human protein was used as the immunogen for this ROR2 antibody.
Isotype:	Ig Fraction
Purification:	Purified

Target Details

Target:	ROR2
Alternative Name:	ROR2 (ROR2 Products)
Background:	ROR2 is a tyrosine-protein kinase receptor which may be involved in the early formation of the chondrocytes. It seems to be required for cartilage and growth plate development. This Type I membrane protein is expressed at high levels during early embryonic development. The

Target Details

expression levels drop strongly around day 16 and there are only very low levels in adult tissues. Defects in ROR2 are a cause of brachydactyly type B1 (BDB1). BDB1 is an autosomal dominant skeletal disorder characterized by hypoplasia/aplasia of distal phalanges and nails. In BDB1 the middle phalanges are short but in addition the terminal phalanges are rudimentary or absent. Both fingers and toes are affected. The thumbs and big toes are usually deformed. Defects in ROR2 are a cause of recessive Robinow syndrome (RRS). RRS is an autosomal disorder characterized by skeletal dysplasia with generalized limb bone shortening, segmental defects of the spine, brachydactyly and a dysmorphic facial appearance. The protein contains 1 frizzled (FZ) domain, 1 immunoglobulin-like C2-type domain, and 1 kringle domain.

UniProt: [Q01974](#)

Pathways: [RTK Signaling](#), [WNT Signaling](#)

Application Details

Application Notes: Titration of the ROR2 antibody may be required due to differences in protocols and secondary/substrate sensitivity.\. Western blot: 1:1000,IHC (Paraffin): 1:10-1:50,Flow Cytometry: 1:10-1:50

Restrictions: For Research Use only

Handling

Format: Liquid

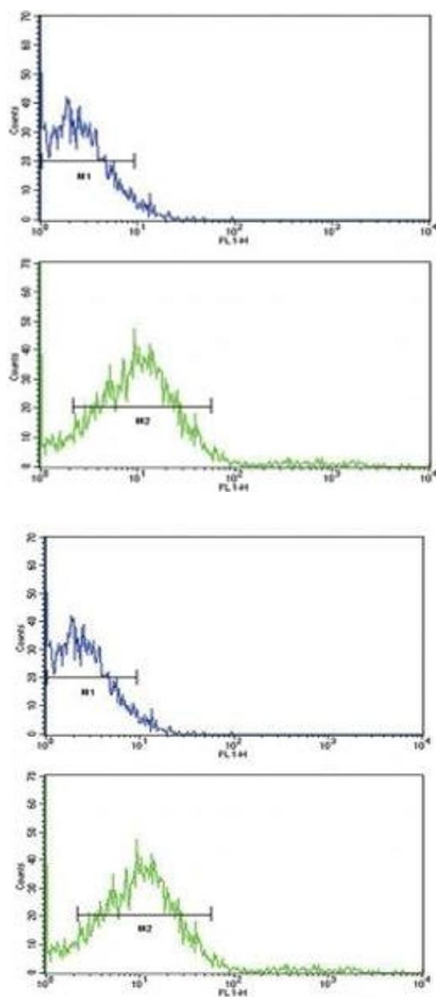
Buffer: In 1X PBS, pH 7.4, with 0.09 % sodium azide

Preservative: Sodium azide

Precaution of Use: This product contains Sodium azide: a POISONOUS AND HAZARDOUS SUBSTANCE which should be handled by trained staff only.

Storage: -20 °C

Storage Comment: Aliquot the ROR2 antibody and store frozen at -20°C or colder. Avoid repeated freeze-thaw cycles.

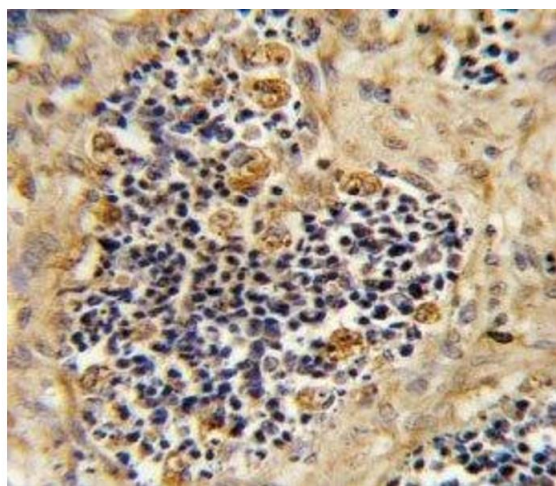


Flow Cytometry

Image 1. Flow cytometric analysis of NCI-H292 cells using ROR2 antibody (green) compared to a [negative control](#) (blue). FITC-conjugated goat-anti-rabbit secondary Ab was used for the analysis.

Flow Cytometry

Image 2. Flow cytometric analysis of NCI-H292 cells using ROR2 antibody (green) compared to a negative control (blue). FITC-conjugated goat-anti-rabbit secondary Ab was used for the analysis.



Immunohistochemistry

Image 3. IHC analysis of FFPE human kidney carcinoma stained with ROR2 antibody

Please check the [product details page](#) for more images. Overall 5 images are available for ABIN3032442.