

Datasheet for ABIN3032445
anti-RIPK2 antibody (AA 39-68)[Go to Product page](#)

3 Images

Overview

Quantity:	0.4 mL
Target:	RIPK2
Binding Specificity:	AA 39-68
Reactivity:	Human
Host:	Rabbit
Clonality:	Polyclonal
Conjugate:	This RIPK2 antibody is un-conjugated
Application:	Western Blotting (WB), ELISA, Immunohistochemistry (IHC)

Product Details

Immunogen:	A portion of amino acids 39-68 from the human protein was used as the immunogen for this RIPK2 antibody.
Isotype:	Ig Fraction
Purification:	Antigen affinity purified

Target Details

Target:	RIPK2
Alternative Name:	RIPK2 (RIPK2 Products)
Background:	This gene encodes a member of the receptor-interacting protein (RIP) family of serine/threonine protein kinases. The encoded protein contains a C-terminal caspase activation and recruitment domain (CARD), and is a component of signaling complexes in both the innate

Target Details

and adaptive immune pathways. It is a potent activator of NF-kappaB and inducer of apoptosis in response to various stimuli.

UniProt: [O43353](#)

Pathways: [TCR Signaling](#), [Neurotrophin Signaling Pathway](#), [Activation of Innate immune Response](#), [Cellular Response to Molecule of Bacterial Origin](#), [Positive Regulation of Immune Effector Process](#), [Toll-Like Receptors Cascades](#)

Application Details

Application Notes: Titration of the RIPK2 antibody may be required due to differences in protocols and secondary/substrate sensitivity.\. Western blot: 1:1000,IHC (Paraffin): 1:10-1:50

Restrictions: For Research Use only

Handling

Format: Liquid

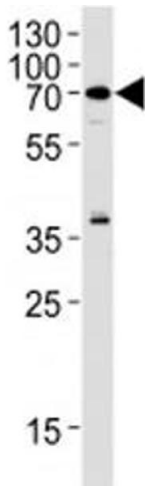
Buffer: In 1X PBS, pH 7.4, with 0.09 % sodium azide

Preservative: Sodium azide

Precaution of Use: This product contains Sodium azide: a POISONOUS AND HAZARDOUS SUBSTANCE which should be handled by trained staff only.

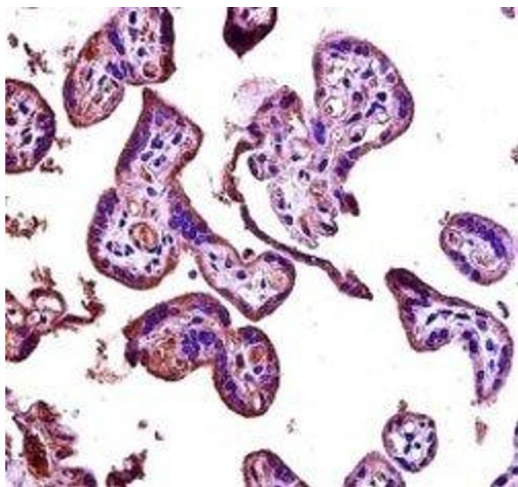
Storage: -20 °C

Storage Comment: Aliquot the RIPK2 antibody and store frozen at -20°C or colder. Avoid repeated freeze-thaw cycles.



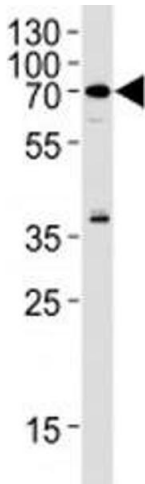
Western Blotting

Image 1. RIPK2 antibody western blot analysis in Raji lysate



Immunohistochemistry

Image 2. RIPK2 antibody immunohistochemistry analysis in formalin fixed and paraffin embedded human placenta tissue.



Western Blotting

Image 3. RIPK2 antibody western blot analysis in Raji lysate