



[Go to Product page](#)

Datasheet for ABIN3032447
anti-RIPK3 antibody (AA 480-509)

3 Images

Overview

Quantity:	0.4 mL
Target:	RIPK3
Binding Specificity:	AA 480-509
Reactivity:	Human
Host:	Rabbit
Clonality:	Polyclonal
Conjugate:	This RIPK3 antibody is un-conjugated
Application:	Western Blotting (WB), Immunohistochemistry (IHC), ELISA

Product Details

Immunogen:	A portion of amino acids 480-509 from the human protein was used as the immunogen for this RIPK3 antibody.
Isotype:	Ig Fraction
Purification:	Antigen affinity purified

Target Details

Target:	RIPK3
Alternative Name:	RIPK3 (RIPK3 Products)
Background:	The product of this gene is a member of the receptor-interacting protein (RIP) family of serine/threonine protein kinases, and contains a C-terminal domain unique from other RIP family members. The encoded protein is predominantly localized to the cytoplasm, and can

Target Details

undergo nucleocytoplasmic shuttling dependent on novel nuclear localization and export signals. It is a component of the tumor necrosis factor (TNF) receptor-I signaling complex, and can induce apoptosis and weakly activate the NF-kappaB transcription factor.

UniProt: [Q9Y572](#)

Pathways: [Activation of Innate immune Response, Toll-Like Receptors Cascades](#)

Application Details

Application Notes: Titration of the RIPK3 antibody may be required due to differences in protocols and secondary/substrate sensitivity.\. Western blot: 1:1000,IHC (Paraffin): 1:10-1:50

Restrictions: For Research Use only

Handling

Format: Liquid

Buffer: In 1X PBS, pH 7.4, with 0.09 % sodium azide

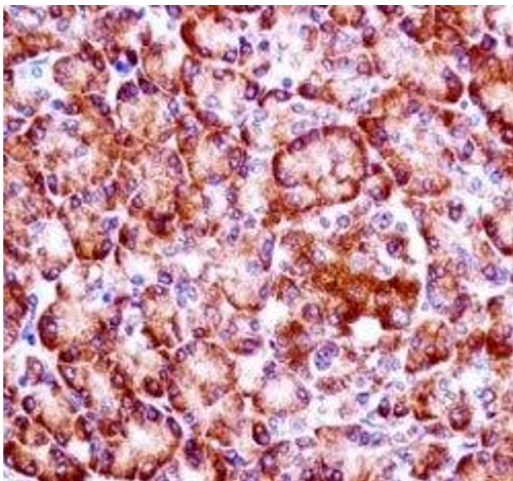
Preservative: Sodium azide

Precaution of Use: This product contains Sodium azide: a POISONOUS AND HAZARDOUS SUBSTANCE which should be handled by trained staff only.

Storage: -20 °C

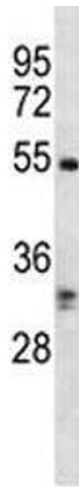
Storage Comment: Aliquot the RIPK3 antibody and store frozen at -20°C or colder. Avoid repeated freeze-thaw cycles.

Images



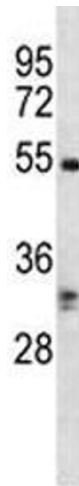
Immunohistochemistry

Image 1. RIPK3 antibody immunohistochemistry analysis in formalin fixed and paraffin embedded human pancreas tissue.



Western Blotting

Image 2. RIPK3 antibody western blot analysis in K562 lysate. Predicted molecular weight ~57 kDa.



Western Blotting

Image 3. RIPK3 antibody western blot analysis in K562 lysate. Predicted molecular weight ~57 kDa.