

Datasheet for ABIN303245  
**anti-SH3GLB1 antibody (C-Term)**[Go to Product page](#)

## 2 Images

## Overview

Quantity:	50 µg
Target:	SH3GLB1
Binding Specificity:	C-Term
Reactivity:	Human, Mouse
Host:	Rabbit
Clonality:	Polyclonal
Conjugate:	This SH3GLB1 antibody is un-conjugated
Application:	Western Blotting (WB), Immunofluorescence (IF), Immunohistochemistry (Paraffin-embedded Sections) (IHC (p))

## Product Details

Immunogen:	Synthetic Peptide corresponding to 15 Amino Acid peptide from near the carboxy terminus of human BIF.
Purification:	Purified

## Target Details

Target:	SH3GLB1
Alternative Name:	Endophilin-B1 ( <a href="#">SH3GLB1 Products</a> )
Background:	BIF-1 contains a Src homology 3 (SH3) domain in the C-terminus. It does not contain any of the conserved Bcl-2 homology (BH) domains of the Bcl-2 family proteins. Human Bif-1 protein shares 96 % and 42 % identity at the amino acids level with mouse and C. elegans, respectively.

## Target Details

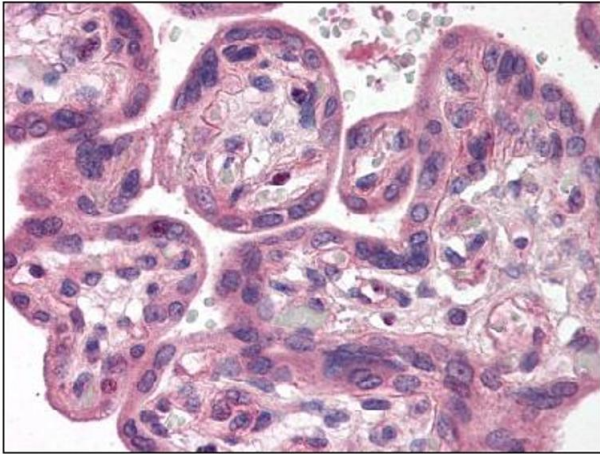
	Overexpression of Bif-1 in transfected cell lines promotes Bax conformational change, caspase activation, and apoptotic cell death following growth factor withdrawal. Bif-1 RNA is abundantly expressed in heart, skeletal muscle, kidney, and placenta.Synonyms: BIF1, Bax-interacting factor 1, Bif-1, KIAA0491, SH3 domain-containing GRB2-like protein B1, SH3GLB1
Gene ID:	51100
NCBI Accession:	<a href="#">NP_001193580</a>
UniProt:	<a href="#">Q9Y371</a>
Pathways:	<a href="#">Autophagy</a>

## Application Details

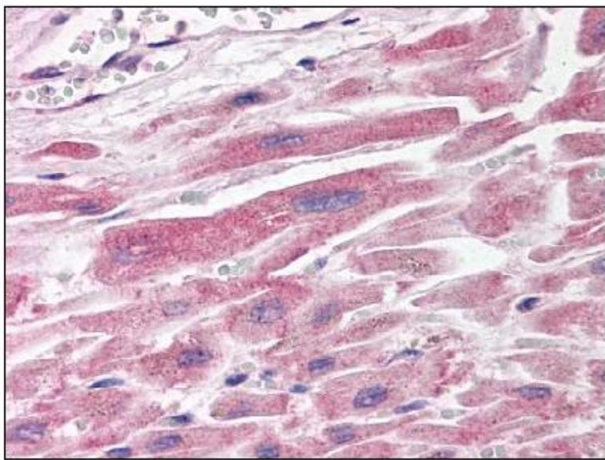
Application Notes:	Immunohistochemistry on Paraffin Sections (2.5 µg/mL). Immunocytochemistry. Western Blot. Other applications not tested. Optimal dilutions are dependent on conditions and should be determined by the user.
Restrictions:	For Research Use only

## Handling

Concentration:	1.0 mg/mL
Buffer:	Phosphate Buffered Saline PBS containing 0.02 % Sodium Azide as preservative.
Preservative:	Sodium azide
Precaution of Use:	This product contains sodium azide: a POISONOUS AND HAZARDOUS SUBSTANCE which should be handled by trained staff only.
Handling Advice:	Avoid repeated freezing and thawing.
Storage:	4 °C/-20 °C
Storage Comment:	Store the antibody undiluted at 2-8 °C for one month or (in aliquots) at -20 °C for longer. Dilute only prior to immediate use.



**Image 1.**



**Image 2.**