

Datasheet for ABIN3032451
anti-RBPJ antibody (AA 1-29)



[Go to Product page](#)

5 Images

Overview

| | |
|----------------------|---|
| Quantity: | 0.4 mL |
| Target: | RBPJ |
| Binding Specificity: | AA 1-29 |
| Reactivity: | Human |
| Host: | Rabbit |
| Clonality: | Polyclonal |
| Conjugate: | This RBPJ antibody is un-conjugated |
| Application: | Western Blotting (WB), Immunohistochemistry (IHC), ELISA, Immunofluorescence (IF) |

Product Details

| | |
|---------------|--|
| Immunogen: | A portion of amino acids 1-29 from the human protein was used as the immunogen for this RBPJ antibody. |
| Isotype: | Ig Fraction |
| Purification: | Antigen affinity purified |

Target Details

| | |
|-------------------|---|
| Target: | RBPJ |
| Alternative Name: | RBPJ (RBPJ Products) |
| Background: | Transcriptional regulator that plays a central role in Notch signaling, a signaling pathway involved in cell-cell communication that regulates a broad spectrum of cell-fate determinations. Acts as a transcriptional repressor when it is not associated with Notch |

Target Details

proteins. When associated with some Notch protein, it acts as a transcriptional activator that activates transcription of Notch target genes. Probably represses or activates transcription via the recruitment of chromatin remodeling complexes containing histone deacetylase or histone acetylase proteins, respectively. Specifically binds to the immunoglobulin kappa-type J segment recombination signal sequence.

UniProt: [Q06330](#)

Pathways: [Notch Signaling](#), [Stem Cell Maintenance](#), [Smooth Muscle Cell Migration](#)

Application Details

Application Notes: Titration of the RBPJ antibody may be required due to differences in protocols and secondary/substrate sensitivity.\. Western blot: 1:1000-2000,IHC (Paraffin): 1:10-1:50,Immunofluorescence: 1:10-1:50

Restrictions: For Research Use only

Handling

Format: Liquid

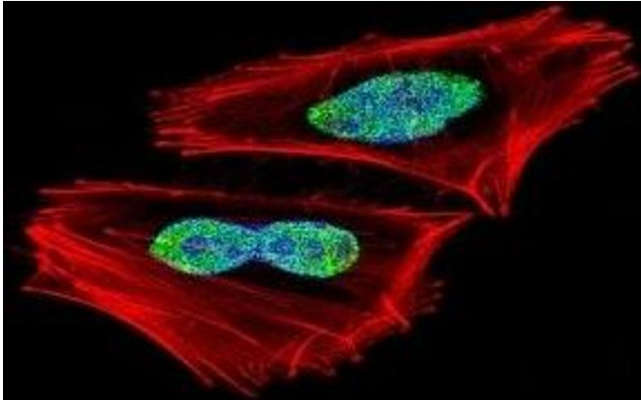
Buffer: In 1X PBS, pH 7.4, with 0.09 % sodium azide

Preservative: Sodium azide

Precaution of Use: This product contains Sodium azide: a POISONOUS AND HAZARDOUS SUBSTANCE which should be handled by trained staff only.

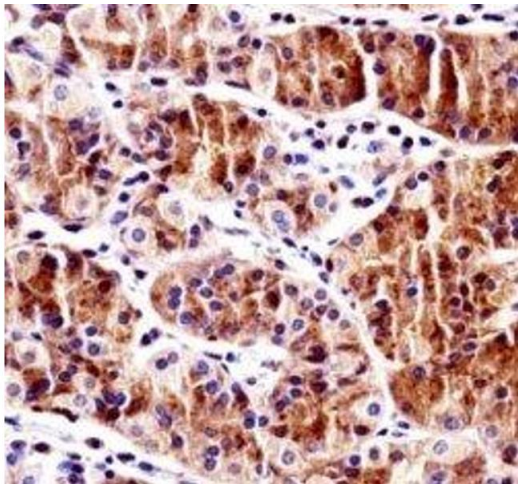
Storage: -20 °C

Storage Comment: Aliquot the RBPJ antibody and store frozen at -20°C or colder. Avoid repeated freeze-thaw cycles.



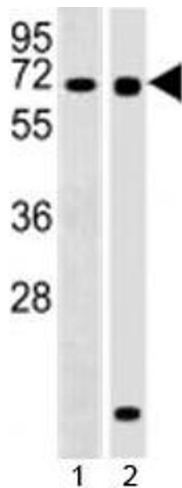
Immunofluorescence

Image 1. Fluorescent confocal image of A2058 cell stained with RBPJ antibody. Alexa Fluor 488 conjugated secondary (green) was used. RBPJ immunoreactivity is localized to the nucleus.



Immunohistochemistry

Image 2. RBPJ antibody immunohistochemistry analysis in formalin fixed and paraffin embedded human stomach tissue.



Western Blotting

Image 3. Western blot testing of RBPJ antibody at 1:2000 dilution and 1) Ramos, 2) human pancreas lysate; Predicted molecular weight ~ 56 kDa.

Please check the [product details page](#) for more images. Overall 5 images are available for ABIN3032451.