

Datasheet for ABIN3032454
anti-RGS14 antibody (C-Term)[Go to Product page](#)

2 Images

Overview

Quantity:	100 µg
Target:	RGS14
Binding Specificity:	C-Term
Reactivity:	Human, Mouse, Rat
Host:	Rabbit
Clonality:	Polyclonal
Conjugate:	This RGS14 antibody is un-conjugated
Application:	Western Blotting (WB)

Product Details

Immunogen:	An amino acid sequence from the C-terminus of human Regulator of G-protein signaling 14 (CTVLADQEVRLNLR) was used as the immunogen for this RGS14 antibody (100% homologous in human, mouse and rat).
Isotype:	IgG
Purification:	Antigen affinity

Target Details

Target:	RGS14
Alternative Name:	RGS14 (RGS14 Products)
Background:	Regulator of G-protein signaling 14 is a protein that in humans is encoded by the RGS14 gene. This gene encodes a member of the regulator of G-protein signaling family. By genomic

Target Details

sequence analysis, this gene is mapped to chromosome 5q35.3. The protein attenuates the signaling activity of G-proteins by binding, through its GoLoco domain, to specific types of activated, GTP-bound G alpha subunits. Acting as a GTPase activating protein(GAP), the protein increases the rate of conversion of the GTP to GDP. This hydrolysis allows the G alpha subunits to bind G beta/gamma subunit heterodimers, forming inactive G-protein heterotrimers, thereby terminating the signal.

UniProt:	O43566
Pathways:	Myometrial Relaxation and Contraction , Regulation of G-Protein Coupled Receptor Protein Signaling , Platelet-derived growth Factor Receptor Signaling

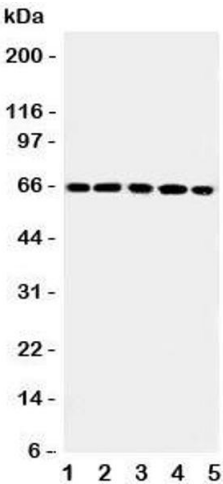
Application Details

Application Notes:	The stated application concentrations are suggested starting amounts. Titration of the RGS14 antibody may be required due to differences in protocols and secondary/substrate sensitivity.\. Western blot: 0.5-1 µg/mL
Restrictions:	For Research Use only

Handling

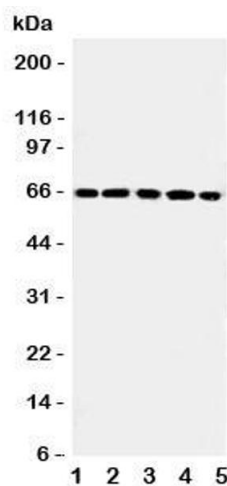
Buffer:	0.5 mg/mL if reconstituted with 0.2 mL sterile DI water
Storage:	-20 °C
Storage Comment:	After reconstitution, the RGS14 antibody can be stored for up to one month at 4°C. For long-term, aliquot and store at -20°C. Avoid repeated freezing and thawing.

Images



Western Blotting

Image 1. Western blot testing of RGS14 antibody and Lane 1: rat thymus; 2: (r) spleen; 3: human Raji; 4: (h) CEM; 5: (h) Jurkat cell lysate. Expected/observed size ~65KD



Western Blotting

Image 2. Western blot testing of RGS14 antibody and Lane 1: rat thymus