

Datasheet for ABIN3032460

**anti-Ret Proto-Oncogene antibody (AA 1012-1042)**[Go to Product page](#)**3** Images

## Overview

Quantity:	0.4 mL
Target:	Ret Proto-Oncogene (RET)
Binding Specificity:	AA 1012-1042
Reactivity:	Human
Host:	Rabbit
Clonality:	Polyclonal
Conjugate:	This Ret Proto-Oncogene antibody is un-conjugated
Application:	Western Blotting (WB), ELISA, Immunohistochemistry (IHC)

## Product Details

Immunogen:	A portion of amino acids 1012-1042 from the human protein was used as the immunogen for this RET antibody.
Isotype:	Ig Fraction
Purification:	Purified

## Target Details

Target:	Ret Proto-Oncogene (RET)
Alternative Name:	RET ( <a href="#">RET Products</a> )
Background:	RET, a member of the cadherin superfamily, is one of the receptor tyrosine kinases, which are cell-surface molecules that transduce signals for cell growth and differentiation. This protein plays a crucial role in neural crest development, and the gene can undergo oncogenic activation

## Target Details

in vivo and in vitro by cytogenetic rearrangement. Mutations i are associated with the disorders multiple endocrine neoplasia, type IIA, multiple endocrine neoplasia, type IIB, Hirschsprung disease, and medullary thyroid carcinoma.

UniProt: [P07949](#)

Pathways: [RTK Signaling](#), [Dopaminergic Neurogenesis](#), [Regulation of Cell Size](#), [Tube Formation](#)

## Application Details

Application Notes: Titration of the RET antibody may be required due to differences in protocols and secondary/substrate sensitivity.\. Western blot: 1:1000,IHC (Paraffin): 1:50-1:100

Restrictions: For Research Use only

## Handling

Format: Liquid

Buffer: In 1X PBS, pH 7.4, with 0.09 % sodium azide

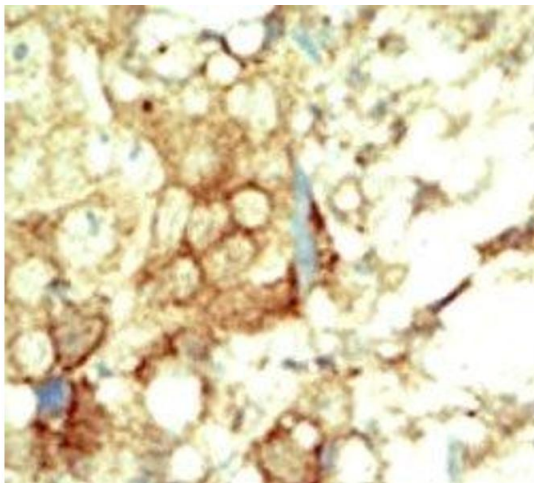
Preservative: Sodium azide

Precaution of Use: This product contains Sodium azide: a POISONOUS AND HAZARDOUS SUBSTANCE which should be handled by trained staff only.

Storage: -20 °C

Storage Comment: Aliquot the RET antibody and store frozen at -20°C or colder. Avoid repeated freeze-thaw cycles.

## Images



### Immunohistochemistry

**Image 1.** IHC analysis of FFPE human breast carcinoma tissue stained with the RET antibody



Western Blotting

**Image 2.** Western blot analysis of RET antibody and 293 cell lysate either nontransfected (Lane 1) or transiently transfected with the RET gene (2).

Western Blotting

**Image 3.** Western blot analysis of RET antibody and 293 cell lysate either nontransfected (Lane 1) or transiently transfected with the RET gene (2).