



[Go to Product page](#)

Datasheet for ABIN3032465

anti-Retinoblastoma Protein (Rb) antibody (AA 586-615)

5 Images

Overview

| | |
|----------------------|---|
| Quantity: | 0.4 mL |
| Target: | Retinoblastoma Protein (Rb) (Rb Protein) |
| Binding Specificity: | AA 586-615 |
| Reactivity: | Human |
| Host: | Rabbit |
| Clonality: | Polyclonal |
| Conjugate: | This Retinoblastoma Protein (Rb) antibody is un-conjugated |
| Application: | Western Blotting (WB), ELISA, Immunohistochemistry (IHC), Immunofluorescence (IF) |

Product Details

| | |
|---------------|---|
| Immunogen: | A portion of amino acids 586-615 from the human protein was used as the immunogen for this Rb antibody. |
| Isotype: | Ig Fraction |
| Purification: | Antigen affinity purified |

Target Details

| | |
|-------------------|--|
| Target: | Retinoblastoma Protein (Rb) (Rb Protein) |
| Alternative Name: | Rb (Retinoblastoma) (Rb Protein Products) |
| Background: | The retinoblastoma protein is a tumor suppressor protein that is dysfunctional in many types of cancer. One highly studied function of pRb is to prevent excessive cell growth by inhibiting cell cycle progression until a cell is ready to divide. pRb belongs to the pocket protein family, whose |

Target Details

members have a pocket for the functional binding of other proteins. Should an oncogenic protein, such as those produced by cells infected by high-risk types of human papillomaviruses, bind and inactivate pRb, this can lead to cancer. Retinoblastoma (Rb) is an embryonic malignant neoplasm of retinal origin. It almost always presents in early childhood and is often bilateral.

UniProt: [P06400](#)

Pathways: [Mitotic G1-G1/S Phases](#)

Application Details

Application Notes: Titration of the Rb antibody may be required due to differences in protocols and secondary/substrate sensitivity.\. Western blot: 1:1000,Immunofluorescence: 1:10-1:50,IHC (Paraffin): 1:10-1:50

Restrictions: For Research Use only

Handling

Format: Liquid

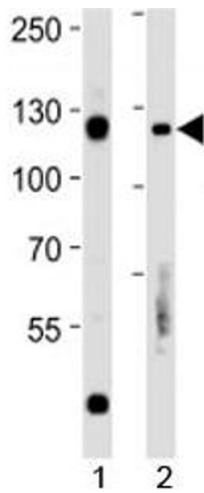
Buffer: In 1X PBS, pH 7.4, with 0.09 % sodium azide

Preservative: Sodium azide

Precaution of Use: This product contains Sodium azide: a POISONOUS AND HAZARDOUS SUBSTANCE which should be handled by trained staff only.

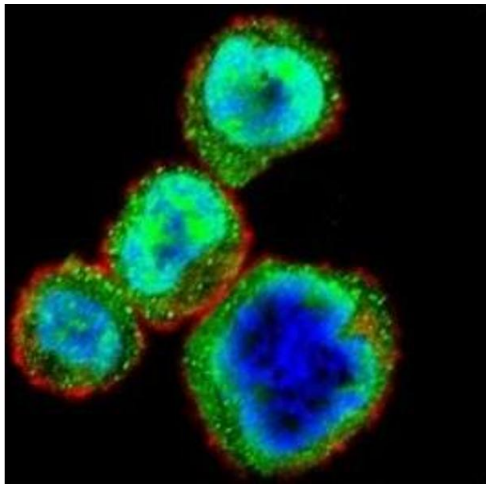
Storage: -20 °C

Storage Comment: Aliquot the Rb antibody and store frozen at -20°C or colder. Avoid repeated freeze-thaw cycles.



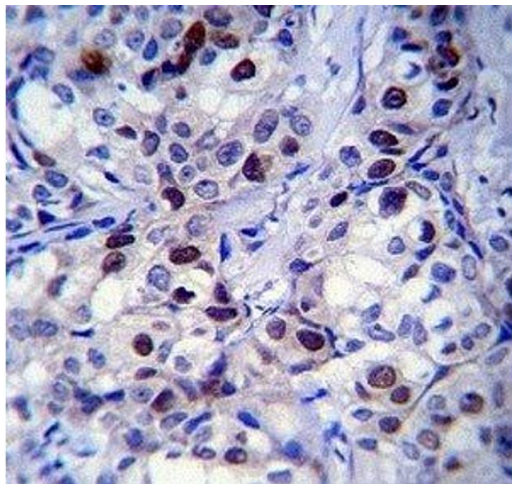
Western Blotting

Image 1. Rb antibody western blot analysis in 1) Daudi and 2) Raji lysate.



Immunofluorescence

Image 2. Confocal immunofluorescent analysis of Rb antibody with MDA-MB435 cells followed by Alexa Fluor 488-conjugated goat anti-rabbit IgG (green). Actin filaments have been labeled with Alexa Fluor 555 Phalloidin (red). DAPI was used as a nuclear counterstain (



Immunohistochemistry

Image 3. Rb antibody immunohistochemistry analysis in formalin fixed and paraffin embedded human breast carcinoma.

Please check the [product details page](#) for more images. Overall 5 images are available for ABIN3032465.