

Datasheet for ABIN3032473

## anti-Rhodopsin antibody (AA 310-339)



[Go to Product page](#)

### 2 Images

#### Overview

Quantity:	0.4 mL
Target:	Rhodopsin (RHO)
Binding Specificity:	AA 310-339
Reactivity:	Human
Host:	Rabbit
Clonality:	Polyclonal
Conjugate:	This Rhodopsin antibody is un-conjugated
Application:	Western Blotting (WB), ELISA

#### Product Details

Immunogen:	A portion of amino acids 310-339 from human Rhodopsin was used as the immunogen for this RHO antibody.
Isotype:	Ig Fraction
Cross-Reactivity (Details):	Expected species reactivity: Primate
Purification:	Antigen affinity purified

#### Target Details

Target:	Rhodopsin (RHO)
Alternative Name:	rho (Rhodopsin) ( <a href="#">RHO Products</a> )
Target Type:	Chemical

## Target Details

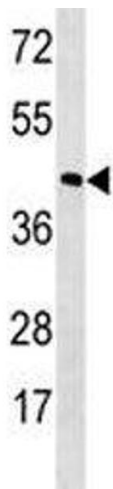
Background:	Retinitis pigmentosa is an inherited progressive disease which is a major cause of blindness in western communities. It can be inherited as an autosomal dominant, autosomal recessive, or X-linked recessive disorder. In the autosomal dominant form, which comprises about 25 % of total cases, approximately 30 % of families have mutations in the gene encoding the rod photoreceptor-specific protein rhodopsin. This is the transmembrane protein which, when photoexcited, initiates the visual transduction cascade. Defects in this gene are also one of the causes of congenital stationary night blindness.
UniProt:	<a href="#">P08100</a>
Pathways:	<a href="#">WNT Signaling</a> , <a href="#">Sensory Perception of Sound</a> , <a href="#">Regulation of G-Protein Coupled Receptor Protein Signaling</a> , <a href="#">Phototransduction</a>

## Application Details

Application Notes:	Titration of the RHO antibody may be required due to differences in protocols and secondary/substrate sensitivity.\. Western blot: 1:1000
Restrictions:	For Research Use only

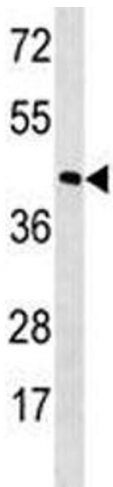
## Handling

Format:	Liquid
Buffer:	In 1X PBS, pH 7.4, with 0.09 % sodium azide
Preservative:	Sodium azide
Precaution of Use:	This product contains Sodium azide: a POISONOUS AND HAZARDOUS SUBSTANCE which should be handled by trained staff only.
Storage:	-20 °C
Storage Comment:	Aliquot the RHO antibody and store frozen at -20°C or colder. Avoid repeated freeze-thaw cycles.



Western Blotting

**Image 1.** RHO antibody western blot analysis in MDA-MB453 lysate. Predicted molecular weight: 40 kDa.



Western Blotting

**Image 2.** RHO antibody western blot analysis in MDA-MB453 lysate. Predicted molecular weight: 40 kDa.