

Datasheet for ABIN3032477
anti-RPS6 antibody (AA 220-249)



[Go to Product page](#)

5 Images

Overview

Quantity:	0.4 mL
Target:	RPS6
Binding Specificity:	AA 220-249
Reactivity:	Human
Host:	Rabbit
Clonality:	Polyclonal
Conjugate:	This RPS6 antibody is un-conjugated
Application:	Western Blotting (WB), ELISA, Immunohistochemistry (IHC), Flow Cytometry (FACS)

Product Details

Immunogen:	A portion of amino acids 220-249 from the human protein was used as the immunogen for this RPS6 antibody.
Isotype:	Ig Fraction
Cross-Reactivity (Details):	Expected species reactivity: Mouse, Rat, Bovine, Primate, Chicken, Xenopus
Purification:	Antigen affinity purified

Target Details

Target:	RPS6
Alternative Name:	RPS6 (RPS6 Products)
Background:	Ribosomes, the organelles that catalyze protein synthesis, consist of a small 40S subunit and a

Target Details

large 60S subunit. Together these subunits are composed of 4 RNA species and approximately 80 structurally distinct proteins. This gene encodes a cytoplasmic ribosomal protein that is a component of the 40S subunit. The protein belongs to the S6E family of ribosomal proteins. It is the major substrate of protein kinases in the ribosome, with subsets of five C-terminal serine residues phosphorylated by different protein kinases. Phosphorylation is induced by a wide range of stimuli, including growth factors, tumor-promoting agents, and mitogens. Dephosphorylation occurs at growth arrest. The protein may contribute to the control of cell growth and proliferation through the selective translation of particular classes of mRNA. As is typical for genes encoding ribosomal proteins, there are multiple processed pseudogenes of this gene dispersed through the genome.

UniProt:	P62753
Pathways:	Carbohydrate Homeostasis , Ribonucleoprotein Complex Subunit Organization , Ribosome Assembly

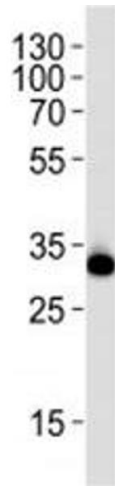
Application Details

Application Notes:	Titration of the RPS6 antibody may be required due to differences in protocols and secondary/substrate sensitivity.\. Western blot: 1:1000,IHC (Paraffin): 1:50-1:100,Flow Cytometry: 1:10-1:50
--------------------	---

Restrictions:	For Research Use only
---------------	-----------------------

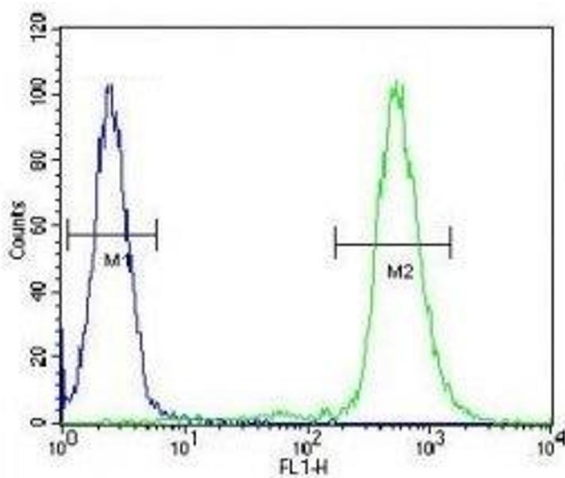
Handling

Format:	Liquid
Buffer:	In 1X PBS, pH 7.4, with 0.09 % sodium azide
Preservative:	Sodium azide
Precaution of Use:	This product contains Sodium azide: a POISONOUS AND HAZARDOUS SUBSTANCE which should be handled by trained staff only.
Storage:	-20 °C
Storage Comment:	Aliquot the RPS6 antibody and store frozen at -20°C or colder. Avoid repeated freeze-thaw cycles.



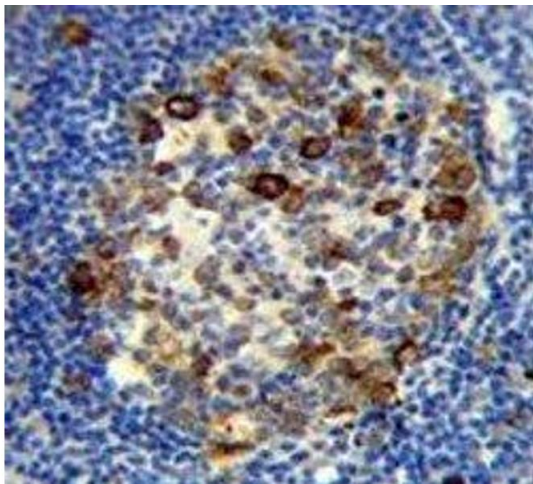
Western Blotting

Image 1. Western blot analysis of lysate from HeLa cell line using RPS6 antibody at 1:1000. Predicted molecular weight ~29 kDa.



Flow Cytometry

Image 2. RPS6 antibody flow cytometric analysis of WiDr cells (green) compared to a negative control (blue). FITC-conjugated goat-anti-rabbit secondary Ab was used for the analysis.



Immunohistochemistry

Image 3. RPS6 antibody immunohistochemistry analysis in formalin fixed and paraffin embedded human tonsil tissue.

Please check the [product details page](#) for more images. Overall 5 images are available for ABIN3032477.