

Datasheet for ABIN3032485

**anti-RPS6KB2 antibody**

5 Images

[Go to Product page](#)

## Overview

Quantity:	0.4 mL
Target:	RPS6KB2
Reactivity:	Human
Host:	Rabbit
Clonality:	Polyclonal
Conjugate:	This RPS6KB2 antibody is un-conjugated
Application:	Western Blotting (WB), ELISA, Immunohistochemistry (IHC), Flow Cytometry (FACS)

## Product Details

Immunogen:	This S6K2 antibody was produced from rabbits immunized with human RPS6KB2 recombinant protein.
Isotype:	Ig Fraction
Purification:	Antigen affinity purified

## Target Details

Target:	RPS6KB2
Alternative Name:	S6K2 ( <a href="#">RPS6KB2 Products</a> )
Background:	<p>RPS6KB2 is a member of the RSK (ribosomal S6 kinase) family of serine/threonine kinases. This kinase contains 2 nonidentical kinase catalytic domains and phosphorylates the S6 ribosomal protein and eucaryotic translation initiation factor 4B. Phosphorylation of S6 leads to an increase in protein synthesis and cell proliferation. [Wiki]</p>

## Target Details

UniProt:	<a href="#">Q9UBS0</a>
Pathways:	<a href="#">PI3K-Akt Signaling</a> , <a href="#">RTK Signaling</a> , <a href="#">AMPK Signaling</a> , <a href="#">Fc-epsilon Receptor Signaling Pathway</a> , <a href="#">EGFR Signaling Pathway</a> , <a href="#">Neurotrophin Signaling Pathway</a>

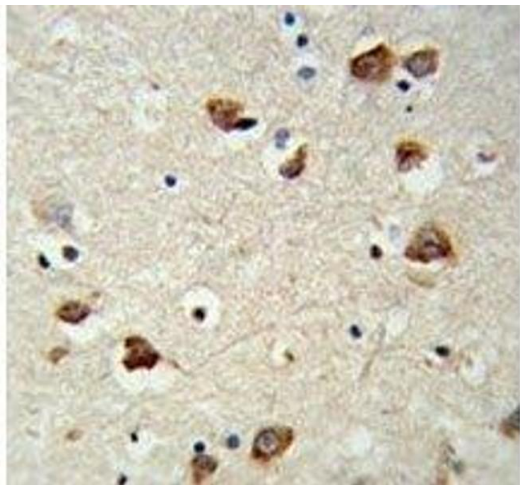
## Application Details

Application Notes:	The stated application concentrations are suggested starting amounts. Titration of the S6K2 antibody may be required due to differences in protocols and secondary/substrate sensitivity.\. Western blot: 1:1000,IHC (Paraffin): 1:50-1:100,Flow Cytometry: 1:10-1:50
Restrictions:	For Research Use only

## Handling

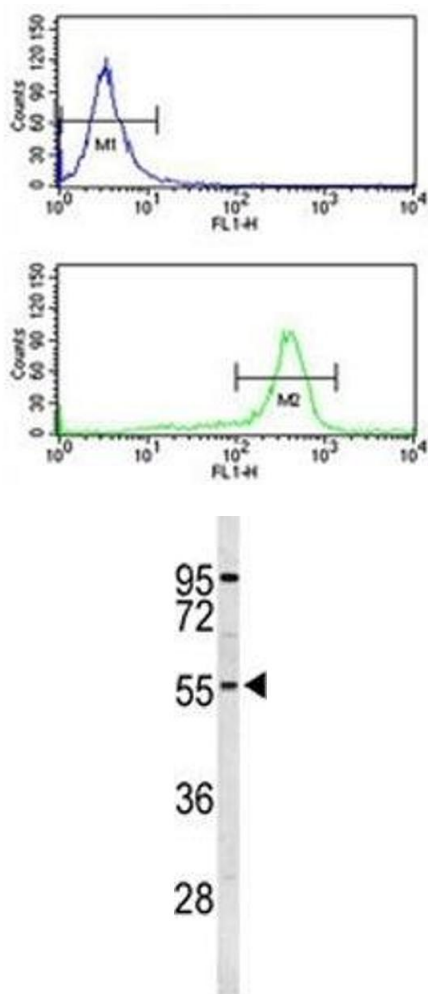
Format:	Liquid
Buffer:	In 1X PBS, pH 7.4, with 0.09 % sodium azide
Preservative:	Sodium azide
Precaution of Use:	This product contains Sodium azide: a POISONOUS AND HAZARDOUS SUBSTANCE which should be handled by trained staff only.
Storage:	-20 °C
Storage Comment:	Store at 4°C for up to one month. For long term, aliquot the S6K2 antibody and store frozen at -20°C or colder. Avoid repeated freeze-thaw cycles.

## Images



### Immunohistochemistry

**Image 1.** IHC analysis of FFPE mouse brain tissue stained with RPS6KB2 antibody



### Flow Cytometry

**Image 2.** RPS6KB2 antibody flow cytometry analysis of K562 cells (bottom histogram) compared to a negative control (top histogram). FITC-conjugated goat-anti-rabbit secondary Ab was used for the analysis.

### Western Blotting

**Image 3.** Western blot analysis of S6K2 antibody and K562 lysate. Predicted molecular weight: 60-70 kDa

Please check the [product details page](#) for more images. Overall 5 images are available for ABIN3032485.