



[Go to Product page](#)

Datasheet for ABIN3032490  
**anti-RNF40 antibody (AA 697-725)**

2 Images

Overview

Quantity:	0.4 mL
Target:	RNF40
Binding Specificity:	AA 697-725
Reactivity:	Human
Host:	Rabbit
Clonality:	Polyclonal
Conjugate:	This RNF40 antibody is un-conjugated
Application:	Western Blotting (WB), ELISA

Product Details

Immunogen:	A portion of amino acids 697-725 from the human protein was used as the immunogen for this RNF40 antibody.
Isotype:	Ig Fraction
Cross-Reactivity (Details):	Expected species reactivity: Mouse, Rat
Purification:	Antigen affinity purified

Target Details

Target:	RNF40
Alternative Name:	RNF40 ( <a href="#">RNF40 Products</a> )
Background:	The protein encoded by this gene contains a RING finger, a motif known to be involved in

## Target Details

protein-protein and protein-DNA interactions. This protein was reported to interact with the tumor suppressor protein RB1. Studies of the rat counterpart suggested that this protein may function as an E3 ubiquitin-protein ligase, and facilitate the ubiquitination and degradation of syntaxin 1, which is an essential component of the neurotransmitter release machinery.

UniProt: [075150](#)

## Application Details

Application Notes: Titration of the RNF40 antibody may be required due to differences in protocols and secondary/substrate sensitivity.\. Western blot: 1:1000

Restrictions: For Research Use only

## Handling

Format: Liquid

Buffer: In 1X PBS, pH 7.4, with 0.09 % sodium azide

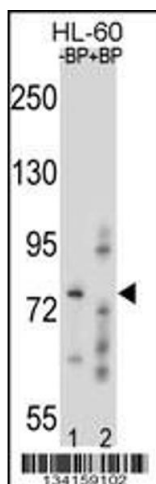
Preservative: Sodium azide

Precaution of Use: This product contains Sodium azide: a POISONOUS AND HAZARDOUS SUBSTANCE which should be handled by trained staff only.

Storage: -20 °C

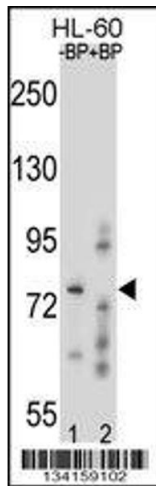
Storage Comment: Aliquot the RNF40 antibody and store frozen at -20°C or colder. Avoid repeated freeze-thaw cycles.

## Images



### Western Blotting

**Image 1.** Western blot analysis of RNF40 antibody pre-incubated without (Lane 1) and with (2) blocking peptide in HL-60 lysate.



### Western Blotting

**Image 2.** Western blot analysis of RNF40 antibody pre-incubated without (Lane 1) and with (2) blocking peptide in HL-60 lysate.