

Datasheet for ABIN3032492
anti-RNF8 antibody (AA 335-364)

3 Images

[Go to Product page](#)

Overview

Quantity:	0.4 mL
Target:	RNF8
Binding Specificity:	AA 335-364
Reactivity:	Human, Mouse
Host:	Rabbit
Clonality:	Polyclonal
Conjugate:	This RNF8 antibody is un-conjugated
Application:	Western Blotting (WB), ELISA

Product Details

Immunogen:	A portion of amino acids 335-364 from the human protein was used as the immunogen for this RNF8 antibody.
Isotype:	Ig Fraction
Purification:	Antigen affinity purified

Target Details

Target:	RNF8
Alternative Name:	RNF8 (RNF8 Products)
Background:	The protein encoded by this gene contains a RING finger motif and a FHA domain. This protein has been shown to interact with several class II ubiquitin-conjugating enzymes (E2), including UBE2E1/UBCH6, UBE2E2, and UBE2E3, and may act as an ubiquitin ligase (E3) in the

Target Details

ubiquitination of certain nuclear proteins. Alternatively spliced transcript variants encoding distinct isoforms have been reported.

UniProt:	O76064
Pathways:	Production of Molecular Mediator of Immune Response

Application Details

Application Notes:	Titration of the RNF8 antibody may be required due to differences in protocols and secondary/substrate sensitivity.\. Western blot: 1:1000
Restrictions:	For Research Use only

Handling

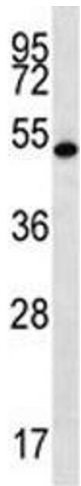
Format:	Liquid
Buffer:	In 1X PBS, pH 7.4, with 0.09 % sodium azide
Preservative:	Sodium azide
Precaution of Use:	This product contains Sodium azide: a POISONOUS AND HAZARDOUS SUBSTANCE which should be handled by trained staff only.
Storage:	-20 °C
Storage Comment:	Aliquot the RNF8 antibody and store frozen at -20°C or colder. Avoid repeated freeze-thaw cycles.

Images



Western Blotting

Image 1. RNF8 antibody western blot analysis in CEM lysate. Predicted molecular weight: 55/51 kDa (isoforms 1/3).



Western Blotting

Image 2. RNF8 antibody western blot analysis in mouse spleen tissue lysate. Predicted molecular weight: 55/51 kDa (isoforms 1/3).



Western Blotting

Image 3. RNF8 antibody western blot analysis in CEM lysate. Predicted molecular weight: 55/51 kDa (isoforms 1/3).